



[Go to Product page](#)

Datasheet for ABIN7270514
anti-SPC24 antibody (AA 1-197)

1 Image

Overview

Quantity:	100 µL
Target:	SPC24
Binding Specificity:	AA 1-197
Reactivity:	Human
Host:	Rabbit
Clonality:	Polyclonal
Conjugate:	This SPC24 antibody is un-conjugated
Application:	Western Blotting (WB)

Product Details

Purpose:	SPC24 Rabbit pAb
Immunogen:	Recombinant fusion protein containing a sequence corresponding to amino acids 1-197 of human SPC24 (NP_872319.1).
Sequence:	MAAFRDIEEV SQGLLSLLGA NRAEAQRRRL LGRHEQVVER LLETQDGAEK QLREILTMEK EVAQSLNNAK EQVHQGGVEL QQLEAGLQEA GEEDTRLKAS LLQLTRELEE LKEIEADLER QEKEVDEDTT VTIPSAVYVA QLYHQVSKIE WDYECEPGMV KGIHHGPSVA QPIHLDSTQL SRKFISDYLLW SLVDTEW
Isotype:	IgG
Cross-Reactivity:	Human, Mouse
Characteristics:	Polyclonal Antibodies

Product Details

Purification: Affinity purification

Target Details

Target: SPC24

Alternative Name: SPC24 ([SPC24 Products](#))

Background: Acts as a component of the essential kinetochore-associated NDC80 complex, which is required for chromosome segregation and spindle checkpoint activity. Required for kinetochore integrity and the organization of stable microtubule binding sites in the outer plate of the kinetochore. The NDC80 complex synergistically enhances the affinity of the SKA1 complex for microtubules and may allow the NDC80 complex to track depolymerizing microtubules. SPC24, SPBC24, Epigenetics & Nuclear Signaling, Cell Biology & Developmental Biology, Apoptosis, Cell Cycle, Centromere, SPC24

Molecular Weight: 17kDa/22kDa

Gene ID: 147841

UniProt: [Q8NBT2](#)

Application Details

Application Notes: WB, 1:500 - 1:2000

Restrictions: For Research Use only

Handling

Format: Liquid

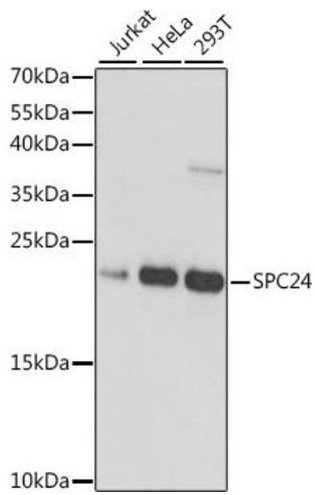
Buffer: PBS with 0.02 % sodium azide, 50 % glycerol, pH 7.3.

Preservative: Sodium azide

Precaution of Use: This product contains Sodium azide: a POISONOUS AND HAZARDOUS SUBSTANCE which should be handled by trained staff only.

Storage: -20 °C

Storage Comment: Store at -20°C. Avoid freeze / thaw cycles.



Western Blotting

Image 1. Western blot analysis of extracts of various cell lines, using SPC24 antibody (ABIN7270514) at 1:1000 dilution. Secondary antibody: HRP Goat Anti-Rabbit IgG (H+L) (ABIN1684268 and ABIN3020597) at 1:10000 dilution. Lysates/proteins: 25 µg per lane. Blocking buffer: 3 % nonfat dry milk in TBST. Detection: ECL Basic Kit (RM00020). Exposure time: 30s.