

Datasheet for ABIN7270517

anti-SPTA1 antibody[Go to Product page](#)**1** Image

Overview

Quantity:	100 µL
Target:	SPTA1
Reactivity:	Human
Host:	Rabbit
Clonality:	Monoclonal
Conjugate:	This SPTA1 antibody is un-conjugated
Application:	Western Blotting (WB)

Product Details

Purpose:	alpha 1 Spectrin Rabbit mAb
Immunogen:	A synthesized peptide derived from human alpha 1 Spectrin
Isotype:	IgG
Cross-Reactivity:	Human, Mouse, Rat
Characteristics:	Monoclonal Antibodies
Purification:	Affinity purification

Target Details

Target:	SPTA1
Alternative Name:	SPTA1 (SPTA1 Products)
Background:	Spectrin is an actin crosslinking and molecular scaffold protein that links the plasma

Target Details

membrane to the actin cytoskeleton, and functions in the determination of cell shape, arrangement of transmembrane proteins, and organization of organelles. It is a tetramer made up of alpha-beta dimers linked in a head-to-head arrangement. This gene is one member of a family of alpha-spectrin genes. The encoded protein is primarily composed of 22 spectrin repeats which are involved in dimer formation. It forms weaker tetramer interactions than non-erythrocytic alpha spectrin, which may increase the plasma membrane elasticity and deformability of red blood cells. Mutations in this gene result in a variety of hereditary red blood cell disorders, including elliptocytosis type 2, pyropoikilocytosis, and spherocytic hemolytic anemia. [provided by RefSeq, Jul 2008],EL2, HPP, HS3, SPH3, SPTA,Blood,Blood_Blood Cell Antigens,Cardiovascular,Cell Biology & Developmental Biology,Cytoskeleton,Cytoskeleton_Microfilaments,Signal Transduction,SPTA1

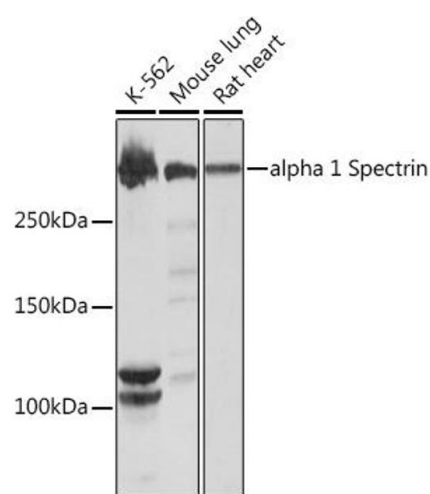
Molecular Weight:	280kDa
Gene ID:	6708
UniProt:	P02549
Pathways:	Regulation of Actin Filament Polymerization

Application Details

Application Notes:	WB,1:500 - 1:2000
Restrictions:	For Research Use only

Handling

Format:	Liquid
Buffer:	PBS with 0.02 % sodium azide,0.05 % BSA,50 % glycerol, pH 7.3.
Preservative:	Sodium azide
Precaution of Use:	This product contains Sodium azide: a POISONOUS AND HAZARDOUS SUBSTANCE which should be handled by trained staff only.
Storage:	-20 °C
Storage Comment:	Store at -20°C. Avoid freeze / thaw cycles.



Western Blotting

Image 1. Western blot analysis of extracts of various cell lines, using alpha 1 Spectrin Rabbit mAb (ABIN7270517) at 1:1000 dilution. Secondary antibody: HRP Goat Anti-Rabbit IgG (H+L) (ABIN1684268 and ABIN3020597) at 1:10000 dilution. Lysates/proteins: 25 µg per lane. Blocking buffer: 3 % nonfat dry milk in TBST. Detection: ECL Basic Kit (RM00020). Exposure time: 10s.