

Datasheet for ABIN7270524

**anti-SPATA5 antibody****3** Images[Go to Product page](#)

## Overview

|              |                                       |
|--------------|---------------------------------------|
| Quantity:    | 100 µL                                |
| Target:      | SPATA5                                |
| Reactivity:  | Human                                 |
| Host:        | Rabbit                                |
| Clonality:   | Polyclonal                            |
| Conjugate:   | This SPATA5 antibody is un-conjugated |
| Application: | Western Blotting (WB)                 |

## Product Details

|                   |                                      |
|-------------------|--------------------------------------|
| Purpose:          | SPATA5 Rabbit pAb                    |
| Immunogen:        | Recombinant protein of human SPATA5. |
| Isotype:          | IgG                                  |
| Cross-Reactivity: | Human, Mouse, Rat                    |
| Characteristics:  | Polyclonal Antibodies                |
| Purification:     | Affinity purification                |

## Target Details

|                   |   |
|-------------------|---|
| Target:           | SPATA5  |
| Alternative Name: | SPATA5 ( <a href="#">SPATA5 Products</a> )  |
| Background:       | This gene encodes a member of the ATPase associated with diverse activities family, whose |

## Target Details

members are defined by a highly conserved ATPase domain. Members of this family participate in diverse cellular processes that include membrane fusion, DNA replication, microtubule severing, and protein degradation. The protein encoded by this gene has a putative mitochondrial targeting sequence and has been proposed to function in maintenance of mitochondrial function and integrity during mouse spermatogenesis. Allelic variants in this gene have been associated with epilepsy, hearing loss, and cognitive disability syndrome. Alternative splicing results in multiple transcript variants.,AFG2, SPAF, EHLMRS,SPATA5

|                   |       |
|-------------------|-------|
| Molecular Weight: | 97kDa |
|-------------------|-------|

|          |        |
|----------|--------|
| Gene ID: | 166378 |
|----------|--------|

|          |                        |
|----------|------------------------|
| UniProt: | <a href="#">Q8NB90</a> |
|----------|------------------------|

## Application Details

|                    |                   |
|--------------------|-------------------|
| Application Notes: | WB,1:500 - 1:2000 |
|--------------------|-------------------|

|               |                       |
|---------------|-----------------------|
| Restrictions: | For Research Use only |
|---------------|-----------------------|

## Handling

|         |        |
|---------|--------|
| Format: | Liquid |
|---------|--------|

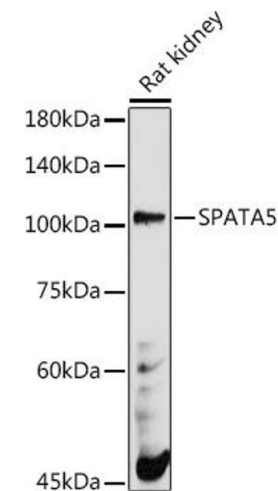
|         |   |
|---------|---|
| Buffer: | PBS with 0.02 % sodium azide,50 % glycerol, pH 7.3. |
|---------|---|

|               |              |
|---------------|--------------|
| Preservative: | Sodium azide |
|---------------|--------------|

|                    |  |
|--------------------|--|
| Precaution of Use: | This product contains Sodium azide: a POISONOUS AND HAZARDOUS SUBSTANCE which should be handled by trained staff only. |
|--------------------|--|

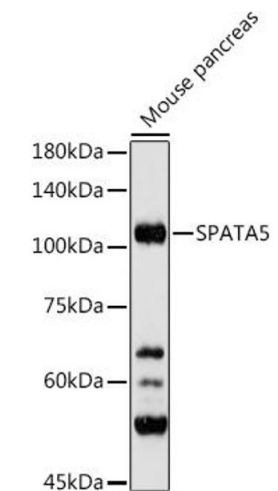
|          |        |
|----------|--------|
| Storage: | -20 °C |
|----------|--------|

|                  |   |
|------------------|---|
| Storage Comment: | Store at -20°C. Avoid freeze / thaw cycles. |
|------------------|---|



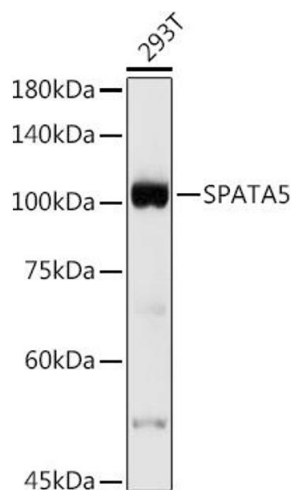
#### Western Blotting

**Image 1.** Western blot analysis of extracts of Rat kidney, using SP antibody (ABIN7270524) at 1:500 dilution. Secondary antibody: HRP Goat Anti-Rabbit IgG (H+L) (ABIN1684268 and ABIN3020597) at 1:10000 dilution. Lysates/proteins: 25 µg per lane. Blocking buffer: 3 % nonfat dry milk in TBST. Detection: ECL Basic Kit (RM00020). Exposure time: 180s.



#### Western Blotting

**Image 2.** Western blot analysis of extracts of Mouse pancreas, using SP antibody (ABIN7270524) at 1:500 dilution. Secondary antibody: HRP Goat Anti-Rabbit IgG (H+L) (ABIN1684268 and ABIN3020597) at 1:10000 dilution. Lysates/proteins: 25 µg per lane. Blocking buffer: 3 % nonfat dry milk in TBST. Detection: ECL Basic Kit (RM00020). Exposure time: 30s.



#### Western Blotting

**Image 3.** Western blot analysis of extracts of 293T cells, using SP antibody (ABIN7270524) at 1:500 dilution. Secondary antibody: HRP Goat Anti-Rabbit IgG (H+L) (ABIN1684268 and ABIN3020597) at 1:10000 dilution. Lysates/proteins: 25 µg per lane. Blocking buffer: 3 % nonfat dry milk in TBST. Detection: ECL Basic Kit (RM00020). Exposure time: 10s.