



Datasheet for ABIN7270529

anti-SMS antibody



[Go to Product page](#)

2 Images

Overview

Quantity:	100 µL
Target:	SMS
Reactivity:	Human
Host:	Rabbit
Clonality:	Monoclonal
Conjugate:	This SMS antibody is un-conjugated
Application:	Western Blotting (WB)

Product Details

Purpose:	Spermine synthase Rabbit mAb
Immunogen:	A synthesized peptide derived from human Spermine synthase.
Isotype:	IgG
Cross-Reactivity:	Human, Mouse, Rat
Characteristics:	Monoclonal Antibodies
Purification:	Affinity purification

Target Details

Target:	SMS
Alternative Name:	Spermine synthase (SMS Products)
Background:	This gene encodes a protein belonging to the spermidine/spermin synthase family.

Target Details

Pseudogenes of this gene are located on chromosomes 1, 5, 6 and X. Mutations in this gene are associated with X-linked Snyder-Robinson mental retardation syndrome. Multiple transcript variants encoding different isoforms have been found for this gene.,SMS, MRSR, SPMSY, SRS, SpS, spermine synthase,Cancer,Signal Transduction,Cell Biology & Developmental Biology,Endocrine & Metabolism,Amino acid metabolism,Spermine synthase

Molecular Weight: 41kDa

Gene ID: 6611

UniProt: [P52788](#)

Application Details

Application Notes: WB,1:500 - 1:2000

Restrictions: For Research Use only

Handling

Format: Liquid

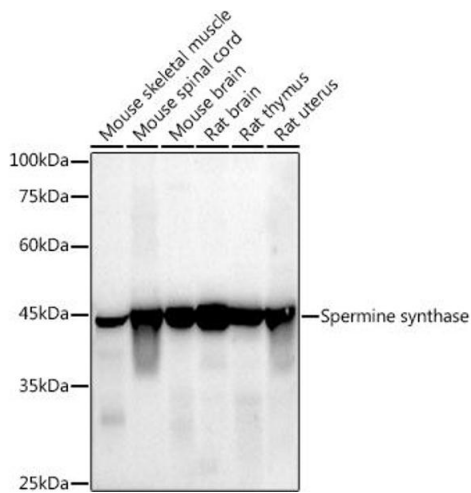
Buffer: PBS with 0.02 % sodium azide,50 % glycerol, pH 7.3.

Preservative: Sodium azide

Precaution of Use: This product contains Sodium azide: a POISONOUS AND HAZARDOUS SUBSTANCE which should be handled by trained staff only.

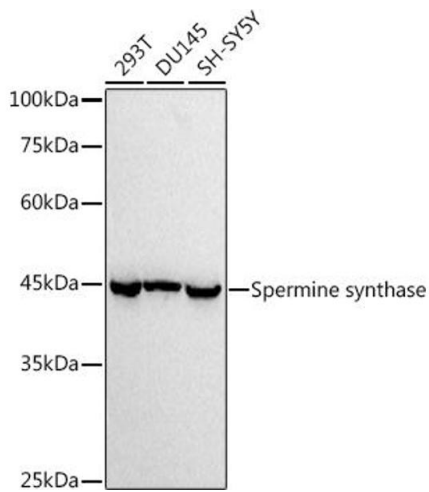
Storage: -20 °C

Storage Comment: Store at -20°C. Avoid freeze / thaw cycles.



Western Blotting

Image 1. Western blot analysis of extracts of various cell lines, using (ABIN7270529) at 1:1000 dilution. Secondary antibody: HRP Goat Anti-Rabbit IgG (H+L) (ABIN1684268 and ABIN3020597) at 1:10000 dilution. Lysates/proteins: 25 µg per lane. Blocking buffer: 3% nonfat dry milk in TBST. Detection: ECL Enhanced Kit (RM00021). Exposure time: 30s.



Western Blotting

Image 2. Western blot analysis of extracts of various cell lines, using (ABIN7270529) at 1:1000 dilution. Secondary antibody: HRP Goat Anti-Rabbit IgG (H+L) (ABIN1684268 and ABIN3020597) at 1:10000 dilution. Lysates/proteins: 25 µg per lane. Blocking buffer: 3% nonfat dry milk in TBST. Detection: ECL Basic Kit (RM00020). Exposure time: 10s.