



[Go to Product page](#)

Datasheet for ABIN7270533
anti-SGPL1 antibody (AA 60-390)

1 Image

Overview

Quantity:	100 µL
Target:	SGPL1
Binding Specificity:	AA 60-390
Reactivity:	Human
Host:	Rabbit
Clonality:	Polyclonal
Conjugate:	This SGPL1 antibody is un-conjugated
Application:	Western Blotting (WB)

Product Details

Purpose:	SGPL1 Rabbit pAb
Immunogen:	Recombinant fusion protein containing a sequence corresponding to amino acids 60-390 of human SGPL1 (NP_003892.2).
Sequence:	VFQPESLWSR FKKKCKFLTR KMPIIGRRIQ DKLNKTKDDI SKNMSFLKVD KEYVKALPSQ GLSSSAVLEK LKEYSSMDAF WQEGRASGTV YSGEEKLTEL LVKAYGDFAW SNPLHPDIFP GLRKIEAEIV RIACSLFNGG PDSCGCVTSG GTESILMACK AYRDLAFEKG IKTPEIVAPQ SAHAAFNAAA SYFGMKIVRV PLTKMMEVDV RAMRRAISRN TAMLVCSTPQ FPHGVIDPVP EVAKLAVKYK IPLHVDACLG GFLIVFMEKA GYPLEHPDFD RVKGVTSISA DTHKYGYAPK GSSLVLYSDK KYRNYQFFVD TDWQGGIYAS P
Isotype:	IgG
Cross-Reactivity:	Human, Mouse, Rat

Product Details

Characteristics: Polyclonal Antibodies

Purification: Affinity purification

Target Details

Target: SGPL1

Alternative Name: SGPL1 ([SGPL1 Products](#))

Background: Cleaves phosphorylated sphingoid bases (PSBs, such as sphingosine-1-phosphate, into fatty aldehydes and phosphoethanolamine. Elevates stress-induced ceramide production and apoptosis. Required for global lipid homeostasis in liver and cholesterol homeostasis in fibroblasts. Involved in the regulation of pro-inflammatory response and neutrophil trafficking. Modulates neuronal autophagy via phosphoethanolamine production which regulates accumulation of aggregate-prone proteins such as APP (By similarity. Seems to play a role in establishing neuronal contact sites and axonal maintenance (By similarity.,SGPL1,S1PL,SPL,Cancer,Signal Transduction,Cell Biology & Developmental Biology,Apoptosis,Endocrine & Metabolism,Lipid Metabolism,Cardiovascular,Lipids,Fatty Acids,SGPL1

Molecular Weight: 63kDa

Gene ID: 8879

UniProt: [O95470](#)

Pathways: [Platelet-derived growth Factor Receptor Signaling](#)

Application Details

Application Notes: WB,1:500 - 1:2000

Restrictions: For Research Use only

Handling

Format: Liquid

Buffer: PBS with 0.02 % sodium azide,50 % glycerol, pH 7.3.

Preservative: Sodium azide

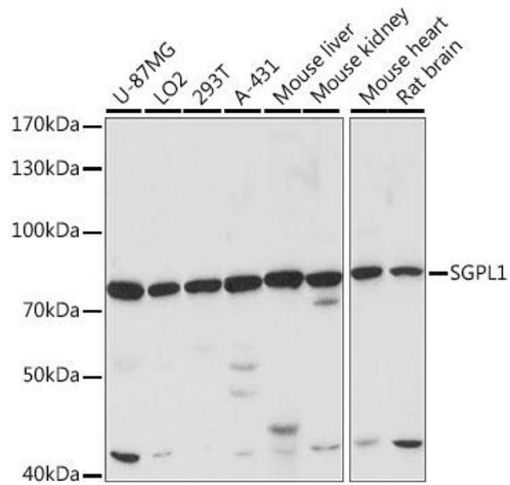
Precaution of Use: This product contains Sodium azide: a POISONOUS AND HAZARDOUS SUBSTANCE which should be handled by trained staff only.

Handling

Storage: -20 °C

Storage Comment: Store at -20°C. Avoid freeze / thaw cycles.

Images



Western Blotting

Image 1. Western blot analysis of extracts of various cell lines, using SGPL1 antibody (ABIN7270533) at 1:1000 dilution. Secondary antibody: HRP Goat Anti-Rabbit IgG (H+L) (ABIN1684268 and ABIN3020597) at 1:10000 dilution. Lysates/proteins: 25 µg per lane. Blocking buffer: 3 % nonfat dry milk in TBST. Detection: ECL Basic Kit (RM00020). Exposure time: 120s.