



[Go to Product page](#)

Datasheet for ABIN7270535
anti-S1PR3 antibody (AA 100-200)

1 Image

Overview

Quantity:	100 µL
Target:	S1PR3
Binding Specificity:	AA 100-200
Reactivity:	Human
Host:	Rabbit
Clonality:	Polyclonal
Conjugate:	This S1PR3 antibody is un-conjugated
Application:	Western Blotting (WB)

Product Details

Purpose:	S1PR3 Rabbit pAb
Immunogen:	A synthetic peptide corresponding to a sequence within amino acids 100-200 of human S1PR3 (NP_005217.2).
Sequence:	GKKTFSLSPT VWFLREGSMF VALGASTCSL LAIAIERHLT MIKMRPYDAN KRHRVLLIG MCWLIAFTLG ALPILGWNCL HNLPCSTIL PLYSKKYIAF C
Isotype:	IgG
Cross-Reactivity:	Mouse
Characteristics:	Polyclonal Antibodies
Purification:	Affinity purification

Target Details

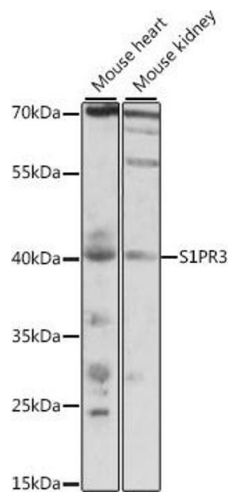
Target:	S1PR3
Alternative Name:	S1PR3 (S1PR3 Products)
Background:	This gene encodes a member of the EDG family of receptors, which are G protein-coupled receptors. This protein has been identified as a functional receptor for sphingosine 1-phosphate and likely contributes to the regulation of angiogenesis and vascular endothelial cell function.,S1PR3,EDG-3,EDG3,LPB3,S1P3,Signal Transduction,G protein signaling,G-Protein-Coupled Receptors(GPCR),Cardiovascular,Cardiovascular diseases,Hypertension,S1PR3
Molecular Weight:	42kDa
Gene ID:	1903
UniProt:	Q99500

Application Details

Application Notes:	WB,1:500 - 1:2000
Restrictions:	For Research Use only

Handling

Format:	Liquid
Buffer:	PBS with 0.02 % sodium azide,50 % glycerol, pH 7.3.
Preservative:	Sodium azide
Precaution of Use:	This product contains Sodium azide: a POISONOUS AND HAZARDOUS SUBSTANCE which should be handled by trained staff only.
Storage:	-20 °C
Storage Comment:	Store at -20°C. Avoid freeze / thaw cycles.



Western Blotting

Image 1. Western blot analysis of extracts of various cell lines, using S1PR3 antibody (ABIN7270535) at 1:1000 dilution. Secondary antibody: HRP Goat Anti-Rabbit IgG (H+L) (ABIN1684268 and ABIN3020597) at 1:10000 dilution. Lysates/proteins: 25 µg per lane. Blocking buffer: 3 % nonfat dry milk in TBST. Detection: ECL Basic Kit (RM00020). Exposure time: 60s.