



[Go to Product page](#)

Datasheet for ABIN7270546
anti-SF3B5 antibody (AA 1-86)

1 Image

Overview

Quantity:	100 µL
Target:	SF3B5
Binding Specificity:	AA 1-86
Reactivity:	Human
Host:	Rabbit
Clonality:	Polyclonal
Conjugate:	This SF3B5 antibody is un-conjugated
Application:	Western Blotting (WB)

Product Details

Purpose:	SF3B5 Rabbit pAb
Immunogen:	Recombinant fusion protein containing a sequence corresponding to amino acids 1-86 of human SF3B5 (NP_112577.1).
Sequence:	MTDRYTIHSQ LEHLQSKYIG TGHADTTKWE WLVNQHRDSY CSYMGHFDLL NYFAIAENES KARVRFNLME KMLQPCGPPA DKPEEN
Isotype:	IgG
Cross-Reactivity:	Human, Mouse, Rat
Characteristics:	Polyclonal Antibodies
Purification:	Affinity purification

Target Details

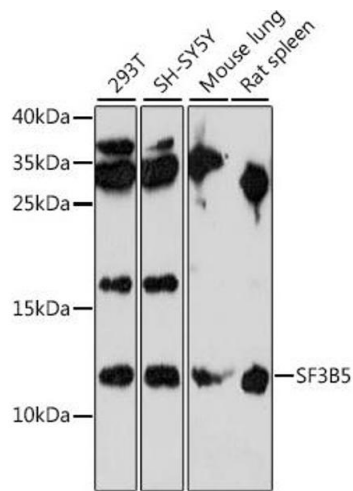
Target:	SF3B5
Alternative Name:	SF3B5 (SF3B5 Products)
Background:	Involved in pre-mRNA splicing as a component of the splicing factor SF3B complex, a constituent of the spliceosome. SF3B complex is required for 'A' complex assembly formed by the stable binding of U2 snRNP to the branchpoint sequence (BPS in pre-mRNA. Sequence independent binding of SF3A/SF3B complex upstream of the branch site is essential, it may anchor U2 snRNP to the pre-mRNA.,SF3B5,SF3b10,Ysf3,Epigenetics & Nuclear Signaling,SF3B5
Molecular Weight:	10kDa
Gene ID:	83443
UniProt:	Q9BWJ5

Application Details

Application Notes:	WB,1:500 - 1:2000
Restrictions:	For Research Use only

Handling

Format:	Liquid
Buffer:	PBS with 0.02 % sodium azide,50 % glycerol, pH 7.3.
Preservative:	Sodium azide
Precaution of Use:	This product contains Sodium azide: a POISONOUS AND HAZARDOUS SUBSTANCE which should be handled by trained staff only.
Storage:	-20 °C
Storage Comment:	Store at -20°C. Avoid freeze / thaw cycles.



Western Blotting

Image 1. Western blot analysis of extracts of various cell lines, using SF3B5 antibody (ABIN7270546) at 1:1000 dilution. Secondary antibody: HRP Goat Anti-Rabbit IgG (H+L) (ABIN1684268 and ABIN3020597) at 1:10000 dilution. Lysates/proteins: 25 µg per lane. Blocking buffer: 3 % nonfat dry milk in TBST. Detection: ECL Enhanced Kit (RM00021). Exposure time: 90s.