



[Go to Product page](#)

Datasheet for ABIN7270550  
**anti-SFRS14 antibody (AA 500-700)**

1 Image

Overview

Quantity:	100 µL
Target:	SFRS14
Binding Specificity:	AA 500-700
Reactivity:	Human
Host:	Rabbit
Clonality:	Polyclonal
Conjugate:	This SFRS14 antibody is un-conjugated
Application:	Western Blotting (WB)

Product Details

Purpose:	SUGP2 Rabbit pAb
Immunogen:	Recombinant fusion protein containing a sequence corresponding to amino acids 500-700 of human SUGP2 (NP_055699.2).
Sequence:	EAVGLQDIAP SPAAFPNFED STLFGREYID HLKAWLVSSG CPLQVKAEP EPMREEEKMI PPTKPEIQAK APSSLSDAVP QRADHRVVG T IDQLVKRVIE GSLSPKERTL LKEDPAYWFL SDENSLEYKY YKLKLAEMQR MSENLRGADQ KPTSADCAVR AMLYSRAVRN LKKKLLPWQR RGLLRAQGLR GWKARRATTG T
Isotype:	IgG
Cross-Reactivity:	Human, Mouse
Characteristics:	Polyclonal Antibodies

## Product Details

---

Purification: Affinity purification

## Target Details

---

Target: SFRS14

Alternative Name: SUGP2 ([SFRS14 Products](#))

Background: This gene encodes a member of the arginine/serine-rich family of splicing factors. The encoded protein functions in mRNA processing. Alternatively spliced transcript variants have been described.,SUGP2,SFRS14,Epigenetics & Nuclear Signaling,RNA Binding,SUGP2

Molecular Weight: 115kDa/116kDa/120kDa

Gene ID: 10147

UniProt: [Q8IX01](#)

## Application Details

---

Application Notes: WB,1:200 - 1:2000

Restrictions: For Research Use only

## Handling

---

Format: Liquid

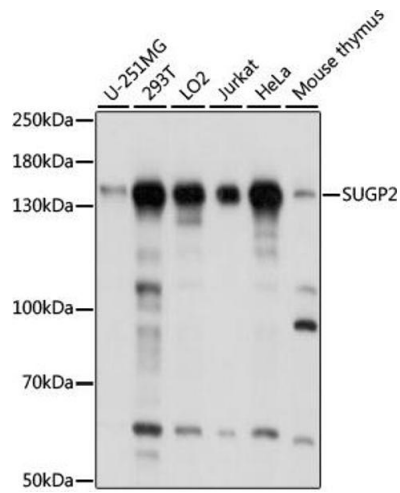
Buffer: PBS with 0.02 % sodium azide,50 % glycerol, pH 7.3.

Preservative: Sodium azide

Precaution of Use: This product contains Sodium azide: a POISONOUS AND HAZARDOUS SUBSTANCE which should be handled by trained staff only.

Storage: -20 °C

Storage Comment: Store at -20°C. Avoid freeze / thaw cycles.



### Western Blotting

**Image 1.** Western blot analysis of extracts of various cell lines, using SUGP2 antibody at 1:1000 dilution. Secondary antibody: HRP Goat Anti-Rabbit IgG (H+L) (ABIN1684268 and ABIN3020597) at 1:10000 dilution. Lysates/proteins: 25 µg per lane. Blocking buffer: 3% nonfat dry milk in TBST. Detection: ECL Basic Kit (RM00020). Exposure time: 5s.