



[Go to Product page](#)

Datasheet for ABIN7270551
anti-SFRS8 antibody (AA 170-280)

1 Image

Overview

Quantity:	100 µL
Target:	SFRS8 (SFSWAP)
Binding Specificity:	AA 170-280
Reactivity:	Human
Host:	Rabbit
Clonality:	Polyclonal
Conjugate:	This SFRS8 antibody is un-conjugated
Application:	Western Blotting (WB)

Product Details

Purpose:	SFSWAP Rabbit pAb
Immunogen:	Recombinant fusion protein containing a sequence corresponding to amino acids 170-280 of human SFSWAP (NP_004583.2).
Sequence:	SKQREKNEAE NLEENEEPFV APLGLSVPSD VELPPTAKMH AIIERTASV CRQGAQFEIM LKAKQARNSQ FDFLRFDHYL NPYYKFIQKA MKEGRYTVLA ENKSDEKKKS G
Isotype:	IgG
Cross-Reactivity:	Human
Characteristics:	Polyclonal Antibodies
Purification:	Affinity purification

Target Details

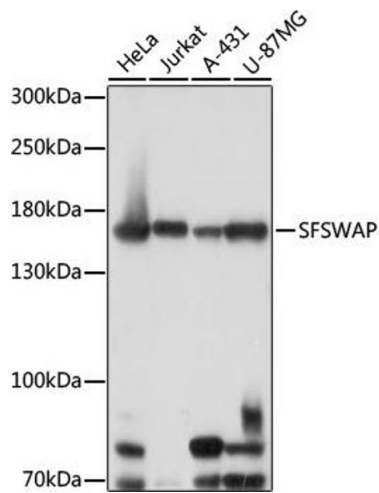
Target:	SFRS8 (SFSWAP)
Alternative Name:	SFSWAP (SFSWAP Products)
Background:	This gene encodes a human homolog of Drosophila splicing regulatory protein. This gene autoregulates its expression by control of splicing of its first two introns. In addition, it also regulates the splicing of fibronectin and CD45 genes. Two transcript variants encoding different isoforms have been identified.,SFSWAP,SFRS8,SWAP,Epigenetics & Nuclear Signaling,SFSWAP
Gene ID:	6433
UniProt:	Q12872
Pathways:	Ribonucleoprotein Complex Subunit Organization

Application Details

Application Notes:	WB,1:500 - 1:2000
Restrictions:	For Research Use only

Handling

Format:	Liquid
Buffer:	PBS with 0.02 % sodium azide,50 % glycerol, pH 7.3.
Preservative:	Sodium azide
Precaution of Use:	This product contains Sodium azide: a POISONOUS AND HAZARDOUS SUBSTANCE which should be handled by trained staff only.
Storage:	-20 °C
Storage Comment:	Store at -20°C. Avoid freeze / thaw cycles.



Western Blotting

Image 1. Western blot analysis of extracts of various cell lines, using SFSWAP antibody (ABIN7270551) at 1:1000 dilution. Secondary antibody: HRP Goat Anti-Rabbit IgG (H+L) (ABIN1684268 and ABIN3020597) at 1:10000 dilution. Lysates/proteins: 25 µg per lane. Blocking buffer: 3 % nonfat dry milk in TBST. Detection: ECL Basic Kit (RM00020). Exposure time: 30s.