

Datasheet for ABIN7270554

**anti-SPRY2 antibody****3** Images[Go to Product page](#)

## Overview

Quantity:	100 µL
Target:	SPRY2
Reactivity:	Human
Host:	Rabbit
Clonality:	Monoclonal
Conjugate:	This SPRY2 antibody is un-conjugated
Application:	Western Blotting (WB), Immunohistochemistry (IHC)

## Product Details

Purpose:	Sprouty 2 Rabbit mAb
Immunogen:	A synthesized peptide derived from human Sprouty 2
Isotype:	IgG
Cross-Reactivity:	Human, Rat
Characteristics:	Monoclonal Antibodies
Purification:	Affinity purification

## Target Details

Target:	SPRY2
Alternative Name:	SPRY2 ( <a href="#">SPRY2 Products</a> )
Background:	This gene encodes a protein belonging to the sprouty family. The encoded protein contains a

## Target Details

carboxyl-terminal cysteine-rich domain essential for the inhibitory activity on receptor tyrosine kinase signaling proteins and is required for growth factor stimulated translocation of the protein to membrane ruffles. In primary dermal endothelial cells this gene is transiently upregulated in response to fibroblast growth factor two. This protein is indirectly involved in the non-cell autonomous inhibitory effect on fibroblast growth factor two signaling. The protein interacts with Cas-Br-M (murine) ectropic retroviral transforming sequence, and can function as a bimodal regulator of epidermal growth factor receptor/mitogen-activated protein kinase signaling. This protein may play a role in alveoli branching during lung development as shown by a similar mouse protein. [provided by RefSeq, Jul 2008],IGAN3,hSPRY2,Angiogenesis,Cardiovascular,ErbB-HER Signaling Pathway,MAPK-Erk Signaling Pathway,Mesenchymal Stem Cells,Neuroscience,Signal Transduction,Stem Cells,SPRY2

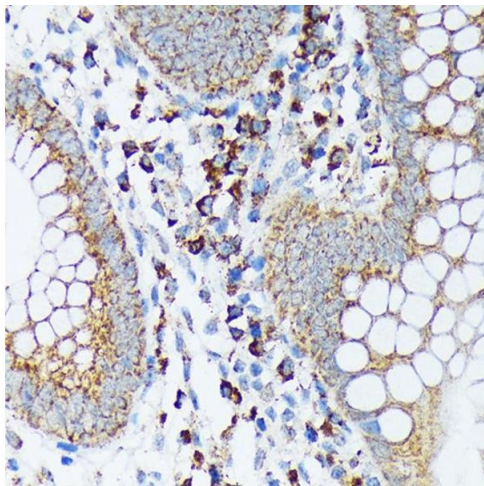
Molecular Weight:	42kDa
Gene ID:	10253
UniProt:	<a href="#">O43597</a>
Pathways:	<a href="#">EGFR Signaling Pathway</a> , <a href="#">Sensory Perception of Sound</a> , <a href="#">EGFR Downregulation</a>

## Application Details

Application Notes:	WB,1:500 - 1:2000,IHC,1:50 - 1:200
Restrictions:	For Research Use only

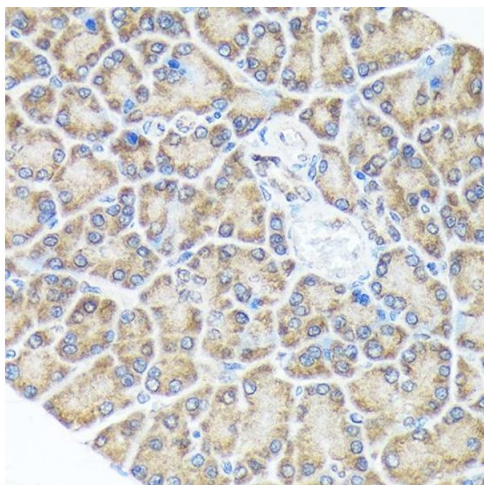
## Handling

Format:	Liquid
Buffer:	PBS with 0.02 % sodium azide,0.05 % BSA,50 % glycerol, pH 7.3.
Preservative:	Sodium azide
Precaution of Use:	This product contains Sodium azide: a POISONOUS AND HAZARDOUS SUBSTANCE which should be handled by trained staff only.
Storage:	-20 °C
Storage Comment:	Store at -20°C. Avoid freeze / thaw cycles.



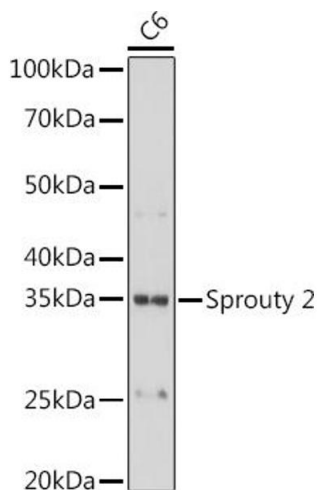
#### Immunohistochemistry

**Image 1.** Immunohistochemistry of paraffin-embedded human appendix using Sprouty 2 Rabbit mAb (ABIN7270554) at dilution of 1:100 (40x lens). Perform microwave antigen retrieval with 10 mM Tris/EDTA buffer pH 9.0 before commencing with IHC staining protocol.



#### Immunohistochemistry

**Image 2.** Immunohistochemistry of paraffin-embedded rat pancreas using Sprouty 2 Rabbit mAb (ABIN7270554) at dilution of 1:100 (40x lens). Perform microwave antigen retrieval with 10 mM Tris/EDTA buffer pH 9.0 before commencing with IHC staining protocol.



#### Western Blotting

**Image 3.** Western blot analysis of extracts of C6 cells, using Sprouty 2 antibody (ABIN7270554) at 1:1000 dilution. Secondary antibody: HRP Goat Anti-Rabbit IgG (H+L) (ABIN1684268 and ABIN3020597) at 1:10000 dilution. Lysates/proteins: 25 µg per lane. Blocking buffer: 3 % nonfat dry milk in TBST. Detection: ECL Basic Kit (RM00020). Exposure time: 10s.