

Datasheet for ABIN7270555
anti-SPRY2 antibody (AA 1-100)[Go to Product page](#)

1 Image

Overview

Quantity:	100 µL
Target:	SPRY2
Binding Specificity:	AA 1-100
Reactivity:	Human
Host:	Rabbit
Clonality:	Polyclonal
Conjugate:	This SPRY2 antibody is un-conjugated
Application:	Western Blotting (WB), Immunohistochemistry (IHC)

Product Details

Purpose:	SPRY2 Rabbit pAb
Immunogen:	A synthetic peptide corresponding to a sequence within amino acids 1-100 of human SPRY2 (NP_005833.1).
Sequence:	MEARAQSGNG SQPLLQTPRD GGRQRGEPDP RDALTQQVHV LSLDQIRAIR NTNEYTEGPT VVPRPGLKPA PRPSTQHKHE RLHGLPEHRQ PPRLQHSQVH
Isotype:	IgG
Cross-Reactivity:	Human, Mouse
Characteristics:	Polyclonal Antibodies
Purification:	Affinity purification

Target Details

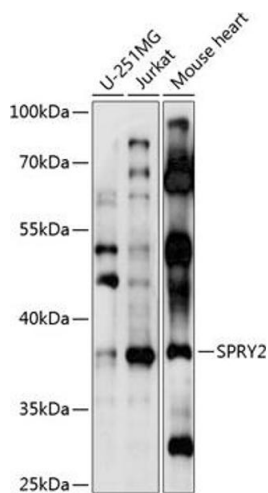
Target:	SPRY2
Alternative Name:	SPRY2 (SPRY2 Products)
Background:	<p>This gene encodes a protein belonging to the sprouty family. The encoded protein contains a carboxyl-terminal cysteine-rich domain essential for the inhibitory activity on receptor tyrosine kinase signaling proteins and is required for growth factor stimulated translocation of the protein to membrane ruffles. In primary dermal endothelial cells this gene is transiently upregulated in response to fibroblast growth factor two. This protein is indirectly involved in the non-cell autonomous inhibitory effect on fibroblast growth factor two signaling. The protein interacts with Cas-Br-M (murine) ectropic retroviral transforming sequence, and can function as a bimodal regulator of epidermal growth factor receptor/mitogen-activated protein kinase signaling. This protein may play a role in alveoli branching during lung development as shown by a similar mouse protein.,SPRY2,IGAN3,hSPRY2,Signal Transduction,ErbB-HER Signaling Pathway,MAPK-Erk Signaling Pathway,Neuroscience,Stem Cells,Mesenchymal Stem Cells,Cardiovascular,Angiogenesis,SPRY2</p>
Molecular Weight:	34kDa
Gene ID:	10253
UniProt:	O43597
Pathways:	EGFR Signaling Pathway , Sensory Perception of Sound , EGFR Downregulation

Application Details

Application Notes:	WB,1:500 - 1:2000,IHC,1:50 - 1:200
Restrictions:	For Research Use only

Handling

Format:	Liquid
Buffer:	PBS with 0.02 % sodium azide,50 % glycerol, pH 7.3.
Preservative:	Sodium azide
Precaution of Use:	This product contains Sodium azide: a POISONOUS AND HAZARDOUS SUBSTANCE which should be handled by trained staff only.
Storage:	-20 °C
Storage Comment:	Store at -20°C. Avoid freeze / thaw cycles.



Western Blotting

Image 1. Western blot analysis of extracts of various cell lines, using SPRY2 antibody at 1:1000 dilution. Secondary antibody: HRP Goat Anti-Rabbit IgG (H+L) (ABIN1684268 and ABIN3020597) at 1:10000 dilution. Lysates/proteins: 25 µg per lane. Blocking buffer: 3 % nonfat dry milk in TBST. Detection: ECL Basic Kit (RM00020). Exposure time: 10s.