

Datasheet for ABIN7270556
anti-SPRY3 antibody (C-Term)



[Go to Product page](#)

1 Image

Overview

Quantity:	100 µL
Target:	SPRY3
Binding Specificity:	C-Term
Reactivity:	Human
Host:	Rabbit
Clonality:	Polyclonal
Conjugate:	This SPRY3 antibody is un-conjugated
Application:	Western Blotting (WB)

Product Details

Purpose:	SPRY3 Rabbit pAb
Immunogen:	A synthetic peptide corresponding to a sequence within amino acids 200 to the C-terminus of human SPRY3 (NP_005831.1).
Sequence:	TDDEDNCADE PCSCGPSSCF VRWAAMSLIS LFLPCLCCYL PTRGCLHLCQ QGYDSLRRPG CRCKRHTNTV CRKISSGSAP FPKAQEKSV
Isotype:	IgG
Cross-Reactivity:	Human
Characteristics:	Polyclonal Antibodies
Purification:	Affinity purification

Target Details

Target:	SPRY3
Alternative Name:	SPRY3 (SPRY3 Products)
Background:	<p>Members of the Sprouty family (Sprouty 1-4) are inducible negative regulators of growth factors that act through tyrosine kinase receptors. Mammalian Sprouty homologs share a well-conserved cysteine-rich carboxy-terminal domain with their Drosophila counterparts. Sprouty proteins are cytoplasmic in unstimulated cells, but in cells stimulated by growth factors they anchor to the plasma membrane by palmitoylation. Sprouty 1 and 2 associate with caveolin-1 in perinuclear and vesicular structures and are phosphorylated on serine residues. Sprouty 2 can associate with c-Cbl, a downregulator of RTK signaling, and inhibit the activities of several growth factors. Unlike the widely expressed Sprouty members 1, 2 and 4, Sprouty 3 expression is restricted to adult brain and testis. Sprouty 4 is a target of the WNT/b-catenin signaling pathway in progenitor cells. In conclusion, members of Sprouty inhibit FGF and VEGF-mediated cell proliferation, suggesting that they may regulate angiogenesis in normal and disease processes.,SPRY3,spry-3,Signal Transduction,ErbB-HER Signaling Pathway,MAPK-Erk Signaling Pathway,Cell Biology & Developmental Biology,Growth factor,SPRY3</p>

Molecular Weight: 31kDa

Gene ID: 10251

UniProt: [O43610](#)

Application Details

Application Notes: WB,1:500 - 1:2000

Restrictions: For Research Use only

Handling

Format: Liquid

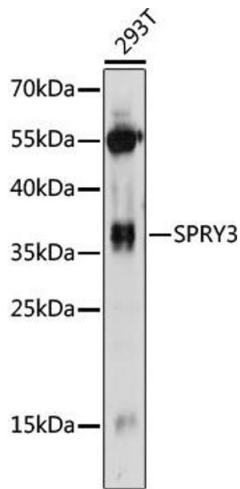
Buffer: PBS with 0.02 % sodium azide,50 % glycerol, pH 7.3.

Preservative: Sodium azide

Precaution of Use: This product contains Sodium azide: a POISONOUS AND HAZARDOUS SUBSTANCE which should be handled by trained staff only.

Storage: -20 °C

Storage Comment: Store at -20°C. Avoid freeze / thaw cycles.



Western Blotting

Image 1. Western blot analysis of extracts of 293T cells, using SPRY3 antibody (ABIN7270556) at 1:1000 dilution. Secondary antibody: HRP Goat Anti-Rabbit IgG (H+L) (ABIN1684268 and ABIN3020597) at 1:10000 dilution. Lysates/proteins: 25 µg per lane. Blocking buffer: 3 % nonfat dry milk in TBST. Detection: ECL Basic Kit (RM00020). Exposure time: 60s.