



[Go to Product page](#)

Datasheet for ABIN7270563
anti-SHB antibody (AA 300-400)

1 Image

Overview

Quantity:	100 µL
Target:	SHB
Binding Specificity:	AA 300-400
Reactivity:	Human
Host:	Rabbit
Clonality:	Polyclonal
Conjugate:	This SHB antibody is un-conjugated
Application:	Western Blotting (WB)

Product Details

Purpose:	SHB Rabbit pAb
Immunogen:	Recombinant fusion protein containing a sequence corresponding to amino acids 300-400 of human SHB (NP_003019.2).
Sequence:	PYEPEGQSVD SDSESTVSPR LRESKLPQDD DRPADEYDQP WEWNRVTIPA LAAQFNGNEK RQSSPSPSRD RRRQLRAPGG GFKPIKHGSP EFCGILGERV D
Isotype:	IgG
Cross-Reactivity:	Human, Mouse, Rat
Characteristics:	Polyclonal Antibodies
Purification:	Affinity purification

Target Details

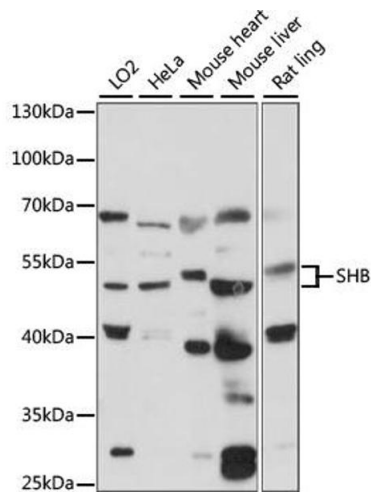
Target:	SHB
Alternative Name:	SHB (SHB Products)
Background:	Adapter protein which regulates several signal transduction cascades by linking activated receptors to downstream signaling components. May play a role in angiogenesis by regulating FGFR1, VEGFR2 and PDGFR signaling. May also play a role in T-cell antigen receptor/TCR signaling, interleukin-2 signaling, apoptosis and neuronal cells differentiation by mediating basic-FGF and NGF-induced signaling cascades. May also regulate IRS1 and IRS2 signaling in insulin-producing cells.,SHB,bA3J10.2,Signal Transduction,Cell Biology & Developmental Biology,Apoptosis,Stem Cells,Embryonic Stem Cells,Cardiovascular,Angiogenesis,SHB
Molecular Weight:	30kDa/55kDa
Gene ID:	6461
UniProt:	Q15464

Application Details

Application Notes:	WB,1:200 - 1:2000
Restrictions:	For Research Use only

Handling

Format:	Liquid
Buffer:	PBS with 0.02 % sodium azide,50 % glycerol, pH 7.3.
Preservative:	Sodium azide
Precaution of Use:	This product contains Sodium azide: a POISONOUS AND HAZARDOUS SUBSTANCE which should be handled by trained staff only.
Storage:	-20 °C
Storage Comment:	Store at -20°C. Avoid freeze / thaw cycles.



Western Blotting

Image 1. Western blot analysis of extracts of various cell lines, using SHB antibody (ABIN7270563) at 1:1000 dilution. Secondary antibody: HRP Goat Anti-Rabbit IgG (H+L) (ABIN1684268 and ABIN3020597) at 1:10000 dilution. Lysates/proteins: 25 µg per lane. Blocking buffer: 3 % nonfat dry milk in TBST. Detection: ECL Basic Kit (RM00020). Exposure time: 90s.