

Datasheet for ABIN7270566

anti-SOX10 antibody**2** Images[Go to Product page](#)

Overview

Quantity:	100 µL
Target:	SOX10
Reactivity:	Human
Host:	Rabbit
Clonality:	Monoclonal
Conjugate:	This SOX10 antibody is un-conjugated
Application:	Western Blotting (WB), Immunofluorescence (IF)

Product Details

Purpose:	SOX10 Rabbit mAb
Immunogen:	A synthesized peptide derived from human SOX10
Isotype:	IgG
Cross-Reactivity:	Human, Mouse, Rat
Characteristics:	Monoclonal Antibodies
Purification:	Affinity purification

Target Details

Target:	SOX10
Alternative Name:	SOX10 (SOX10 Products)
Background:	This gene encodes a member of the SOX (SRY-related HMG-box) family of transcription factors

Target Details

involved in the regulation of embryonic development and in the determination of the cell fate. The encoded protein may act as a transcriptional activator after forming a protein complex with other proteins. This protein acts as a nucleocytoplasmic shuttle protein and is important for neural crest and peripheral nervous system development. Mutations in this gene are associated with Waardenburg-Shah and Waardenburg-Hirschsprung disease. [provided by RefSeq, Jul 2008],DOM, PCWH, WS2E, WS4, WS4C,Cell Biology & Developmental Biology,Cell Type Marker,Cell Type Marker_Neural Stem Cell marker,Epigenetics & Nuclear Signaling,Neuroscience,Stem Cells,Transcription Factors,SOX10

Molecular Weight: 60kDa

Gene ID: 6663

UniProt: [P56693](#)

Pathways: [Chromatin Binding](#)

Application Details

Application Notes: WB,1:500 - 1:2000,IF,1:50 - 1:200

Restrictions: For Research Use only

Handling

Format: Liquid

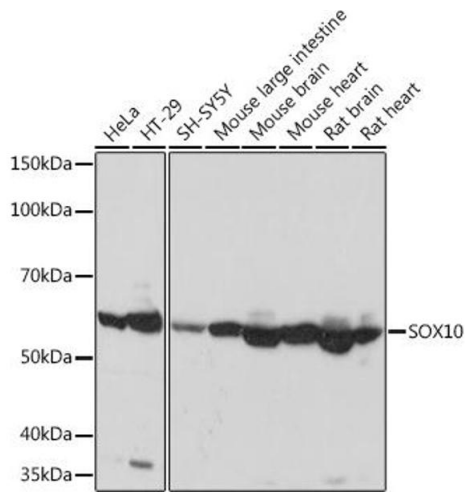
Buffer: PBS with 0.02 % sodium azide,0.05 % BSA,50 % glycerol, pH 7.3.

Preservative: Sodium azide

Precaution of Use: This product contains Sodium azide: a POISONOUS AND HAZARDOUS SUBSTANCE which should be handled by trained staff only.

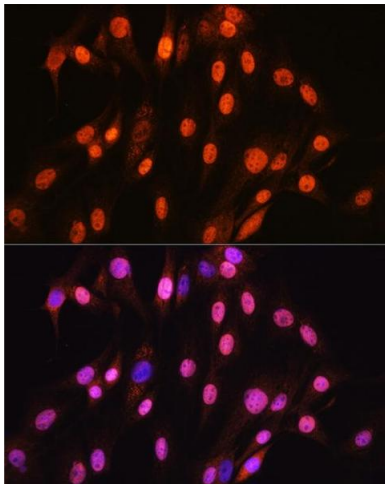
Storage: -20 °C

Storage Comment: Store at -20°C. Avoid freeze / thaw cycles.



Western Blotting

Image 1. Western blot analysis of extracts of various cell lines, using SOX10 Rabbit mAb (ABIN7270566) at 1:1000 dilution. Secondary antibody: HRP Goat Anti-Rabbit IgG (H+L) (ABIN1684268 and ABIN3020597) at 1:10000 dilution. Lysates/proteins: 25 µg per lane. Blocking buffer: 3 % nonfat dry milk in TBST. Detection: ECL Basic Kit (RM00020). Exposure time: 5s.



Immunofluorescence

Image 2. Immunofluorescence analysis of C6 cells using SOX10 Rabbit mAb (ABIN7270566) at dilution of 1:100 (40x lens). Blue: DAPI for nuclear staining.