

Datasheet for ABIN7270579

anti-ST6GALNAC2 antibody (AA 30-200)[Go to Product page](#)

1 Image

Overview

Quantity:	100 µL
Target:	ST6GALNAC2
Binding Specificity:	AA 30-200
Reactivity:	Human
Host:	Rabbit
Clonality:	Polyclonal
Conjugate:	This ST6GALNAC2 antibody is un-conjugated
Application:	Western Blotting (WB)

Product Details

Purpose:	ST6GALNAC2 Rabbit pAb
Immunogen:	Recombinant fusion protein containing a sequence corresponding to amino acids 30-200 of human ST6GALNAC2 (NP_006447.2).
Sequence:	AVQRYPGPAA GARDTTSFEA FFQSKASNSW TGKGQACRHL LHLAIQRHPH FRGLFNLSIP VLLWGDLFTP ALWDRLSQHK APYGWRGLSH QVIASLTL SLL NGSESAKLFA PPRDTPPKCI RCAVVGNGGI LNGSRQGPNI DAHDYVFRLN GAVIKGFERD VGTKTSFYGF T
Isotype:	IgG
Cross-Reactivity:	Human, Mouse, Rat
Characteristics:	Polyclonal Antibodies
Purification:	Affinity purification

Target Details

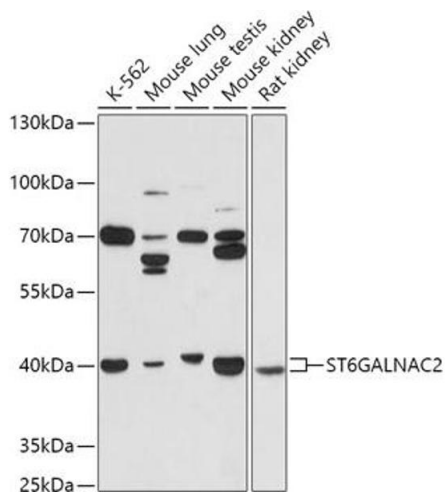
Target:	ST6GALNAC2
Alternative Name:	ST6GALNAC2 (ST6GALNAC2 Products)
Background:	ST6GALNAC2 belongs to a family of sialyltransferases that add sialic acids to the nonreducing ends of glycoconjugates. At the cell surface, these modifications have roles in cell-cell and cell-substrate interactions, bacterial adhesion, and protein targeting (Samyn-Petit et al., 2000 [PubMed 10742600]).[supplied by OMIM, Mar 2008],SAITL1,SIAT7,SIAT7B,SIATL1,ST6GalNAII,STHM,ST6GALNAC2
Gene ID:	10610
UniProt:	Q9UJ37

Application Details

Application Notes:	WB,1:500 - 1:2000
Restrictions:	For Research Use only

Handling

Format:	Liquid
Buffer:	PBS with 0.02 % sodium azide,50 % glycerol, pH 7.3.
Preservative:	Sodium azide
Precaution of Use:	This product contains Sodium azide: a POISONOUS AND HAZARDOUS SUBSTANCE which should be handled by trained staff only.
Storage:	-20 °C
Storage Comment:	Store at -20°C. Avoid freeze / thaw cycles.



Western Blotting

Image 1. Western blot analysis of extracts of various cell lines, using ST6G antibody (ABIN7270579) at 1:1000 dilution. Secondary antibody: HRP Goat Anti-Rabbit IgG (H+L) (ABIN1684268 and ABIN3020597) at 1:10000 dilution. Lysates/proteins: 25 µg per lane. Blocking buffer: 3% nonfat dry milk in TBST. Detection: ECL Basic Kit (RM00020). Exposure time: 90s.