

Datasheet for ABIN7270586
anti-STAU1/Staufen antibody[Go to Product page](#)

2 Images

Overview

Quantity:	100 µL
Target:	STAU1/Staufen (STAU1)
Reactivity:	Human
Host:	Rabbit
Clonality:	Monoclonal
Conjugate:	This STAU1/Staufen antibody is un-conjugated
Application:	Western Blotting (WB)

Product Details

Purpose:	Staufen Rabbit mAb
Immunogen:	A synthesized peptide derived from human Staufen
Isotype:	IgG
Cross-Reactivity:	Human, Mouse, Rat
Characteristics:	Monoclonal Antibodies
Purification:	Affinity purification

Target Details

Target:	STAU1/Staufen (STAU1)
Alternative Name:	STAU1 (STAU1 Products)
Background:	Staufen is a member of the family of double-stranded RNA (dsRNA)-binding proteins involved in

Target Details

the transport and/or localization of mRNAs to different subcellular compartments and/or organelles. These proteins are characterized by the presence of multiple dsRNA-binding domains which are required to bind RNAs having double-stranded secondary structures. The human homologue of staufer encoded by STAU, in addition contains a microtubule-binding domain similar to that of microtubule-associated protein 1B, and binds tubulin. The STAU gene product has been shown to be present in the cytoplasm in association with the rough endoplasmic reticulum (RER), implicating this protein in the transport of mRNA via the microtubule network to the RER, the site of translation. Five transcript variants resulting from alternative splicing of STAU gene and encoding three isoforms have been described. Three of these variants encode the same isoform, however, differ in their 5'UTR. [provided by RefSeq, Jul 2008],PPP1R150, STAU,Cell Biology & Developmental Biology,Cytoskeleton,Cytoskeleton_Microtubules,Neuroscience,Signal Transduction,STAU1

Molecular Weight: 55kDa

Gene ID: 6780

UniProt: [O95793](#)

Pathways: [Asymmetric Protein Localization](#)

Application Details

Application Notes: WB,1:500 - 1:2000

Restrictions: For Research Use only

Handling

Format: Liquid

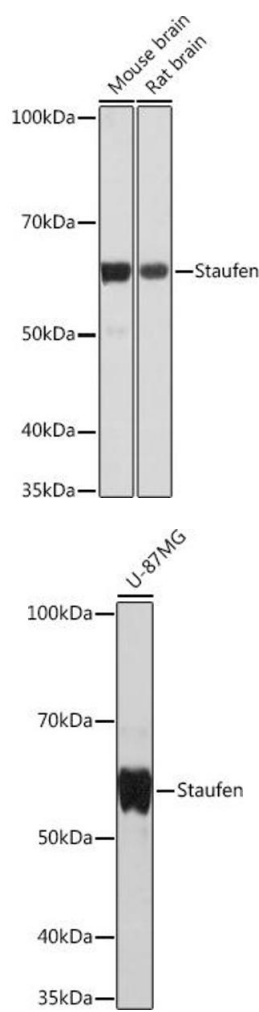
Buffer: PBS with 0.02 % sodium azide,0.05 % BSA,50 % glycerol, pH 7.3.

Preservative: Sodium azide

Precaution of Use: This product contains Sodium azide: a POISONOUS AND HAZARDOUS SUBSTANCE which should be handled by trained staff only.

Storage: -20 °C

Storage Comment: Store at -20°C. Avoid freeze / thaw cycles.



Western Blotting

Image 1. Western blot analysis of extracts of various cell lines, using Staufen Rabbit mAb (ABIN7270586) at 1:1000 dilution. Secondary antibody: HRP Goat Anti-Rabbit IgG (H+L) (ABIN1684268 and ABIN3020597) at 1:10000 dilution. Lysates/proteins: 25 µg per lane. Blocking buffer: 3 % nonfat dry milk in TBST. Detection: ECL Basic Kit (RM00020). Exposure time: 60s.

Western Blotting

Image 2. Western blot analysis of extracts of U-87MG cells, using Staufen Rabbit mAb (ABIN7270586) at 1:1000 dilution. Secondary antibody: HRP Goat Anti-Rabbit IgG (H+L) (ABIN1684268 and ABIN3020597) at 1:10000 dilution. Lysates/proteins: 25 µg per lane. Blocking buffer: 3 % nonfat dry milk in TBST. Detection: ECL Basic Kit (RM00020). Exposure time: 1s.