

Datasheet for ABIN7270588
anti-STEAP4 antibody (AA 1-100)[Go to Product page](#)

3 Images

Overview

Quantity:	100 µL
Target:	STEAP4
Binding Specificity:	AA 1-100
Reactivity:	Human
Host:	Rabbit
Clonality:	Polyclonal
Conjugate:	This STEAP4 antibody is un-conjugated
Application:	Western Blotting (WB), Immunofluorescence (IF)

Product Details

Purpose:	STEAP4 Rabbit pAb
Immunogen:	Recombinant fusion protein containing a sequence corresponding to amino acids 1-100 of human STEAP4 (NP_001192245).
Sequence:	MEKTCIDALP LTMNSSEKQE TVCIFGTGDF GRSLGLKMLQ CGYSVVFGRS NPQKTTLLPS GAEVLSYSEA AKKSGIIIIA IHREHYDFLT ELTEVLNGKI
Isotype:	IgG
Cross-Reactivity:	Human, Mouse, Rat
Characteristics:	Polyclonal Antibodies
Purification:	Affinity purification

Target Details

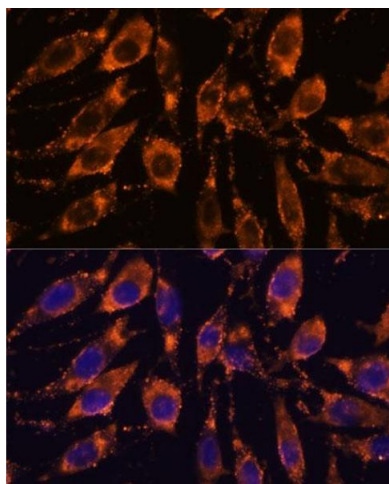
Target:	STEAP4
Alternative Name:	STEAP4 (STEAP4 Products)
Background:	<p>The protein encoded by this gene belongs to the STEAP (six transmembrane epithelial antigen of prostate) family, and resides in the golgi apparatus. It functions as a metalloreductase that has the ability to reduce both Fe(3+) to Fe(2+) and Cu(2+) to Cu(1+), using NAD(+) as acceptor. Studies in mice and human suggest that this gene maybe involved in adipocyte development and metabolism, and may contribute to the normal biology of the prostate cell, as well as prostate cancer progression. Alternatively spliced transcript variants encoding different isoforms have been found for this gene. [provided by RefSeq, Apr 2011],STAMP2,SchLAH,TIARP,TNFAIP9,STEAP4,Cancer,Tumor immunology,Tumor-associated antigens,Tumor biomarkers,Endocrine & Metabolism,Endocrine and metabolic diseases,Obesity,Immunology & Inflammation,STEAP4</p>
Molecular Weight:	31kDa/51kDa
Gene ID:	79689
UniProt:	Q687X5
Pathways:	Transition Metal Ion Homeostasis

Application Details

Application Notes:	WB,1:500 - 1:2000,IF,1:50 - 1:200
Restrictions:	For Research Use only

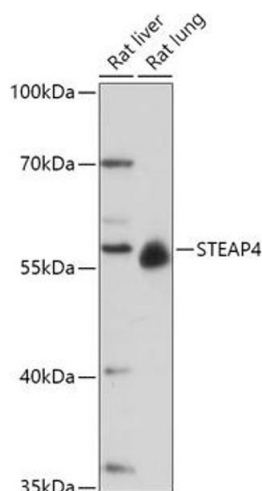
Handling

Format:	Liquid
Buffer:	PBS with 0.02 % sodium azide,50 % glycerol, pH 7.3.
Preservative:	Sodium azide
Precaution of Use:	This product contains Sodium azide: a POISONOUS AND HAZARDOUS SUBSTANCE which should be handled by trained staff only.
Storage:	-20 °C
Storage Comment:	Store at -20°C. Avoid freeze / thaw cycles.



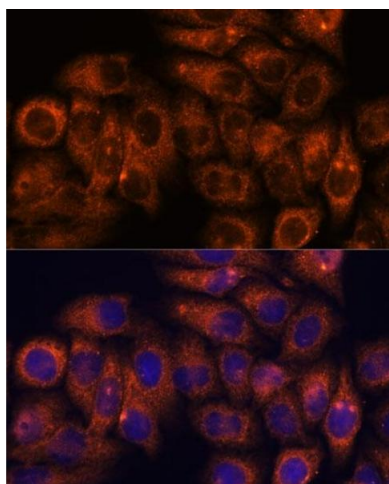
Immunofluorescence

Image 1. Immunofluorescence analysis of L929 cells using STE antibody (ABIN7270588) at dilution of 1:100. Blue: DAPI for nuclear staining.



Western Blotting

Image 2. Western blot analysis of extracts of various cell lines, using STE antibody (ABIN7270588) at 1:1000 dilution. Secondary antibody: HRP Goat Anti-Rabbit IgG (H+L) (ABIN1684268 and ABIN3020597) at 1:10000 dilution. Lysates/proteins: 25 µg per lane. Blocking buffer: 3 % nonfat dry milk in TBST. Detection: ECL Basic Kit (RM00020). Exposure time: 30s.



Immunofluorescence

Image 3. Immunofluorescence analysis of HeLa cells using STE antibody (ABIN7270588) at dilution of 1:100. Blue: DAPI for nuclear staining.