

Datasheet for ABIN7270589
anti-SCD antibody (C-Term)



[Go to Product page](#)

5 Images

Overview

Quantity:	100 µL
Target:	SCD
Binding Specificity:	C-Term
Reactivity:	Human
Host:	Rabbit
Clonality:	Polyclonal
Conjugate:	This SCD antibody is un-conjugated
Application:	Western Blotting (WB), Immunohistochemistry (IHC), Immunofluorescence (IF)

Product Details

Purpose:	SCD Rabbit pAb
Immunogen:	A synthetic peptide corresponding to a sequence within amino acids 200 to the C-terminus of human SCD (NP_005054.3).
Sequence:	LDLSDLEAEK LVMFQRRYYK PGLLMMCFIL PTLVPWYFWG ETFQNSVFVA TFLRYAVVLN ATWLVNSAAH LFGYRPYDKN ISPRENILVS LGAVGEGFHN YHHSFPYDYS ASEYRWHINF TTFIDCMAA LGLAYDRKKV SKAAILARIK RTGDGNYKSG
Isotype:	IgG
Cross-Reactivity:	Human, Mouse, Rat
Characteristics:	Polyclonal Antibodies
Purification:	Affinity purification

Target Details

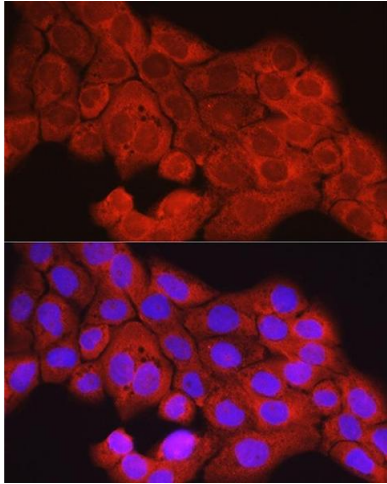
Target:	SCD
Alternative Name:	SCD (SCD Products)
Background:	<p>This gene encodes an enzyme involved in fatty acid biosynthesis, primarily the synthesis of oleic acid. The protein belongs to the fatty acid desaturase family and is an integral membrane protein located in the endoplasmic reticulum. Transcripts of approximately 3.9 and 5.2 kb, differing only by alternative polyadenylation signals, have been detected. A gene encoding a similar enzyme is located on chromosome 4 and a pseudogene of this gene is located on chromosome 17.,SCD,FADS5,MSTP008,SCD1,SCDOS,hSCD1,Cancer,Signal Transduction,Endocrine & Metabolism,Lipid Metabolism,Endocrine and metabolic diseases,Obesity,Cardiovascular,Lipids,Fatty Acids,SCD</p>
Molecular Weight:	41kDa
Gene ID:	6319
UniProt:	O00767
Pathways:	Brown Fat Cell Differentiation

Application Details

Application Notes:	WB,1:500 - 1:2000,IHC,1:50 - 1:100,IF,1:50 - 1:100
Restrictions:	For Research Use only

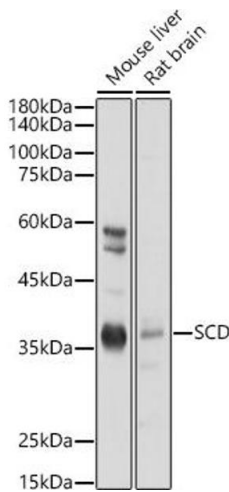
Handling

Format:	Liquid
Buffer:	PBS with 0.02 % sodium azide,50 % glycerol, pH 7.3.
Preservative:	Sodium azide
Precaution of Use:	This product contains Sodium azide: a POISONOUS AND HAZARDOUS SUBSTANCE which should be handled by trained staff only.
Storage:	-20 °C
Storage Comment:	Store at -20°C. Avoid freeze / thaw cycles.



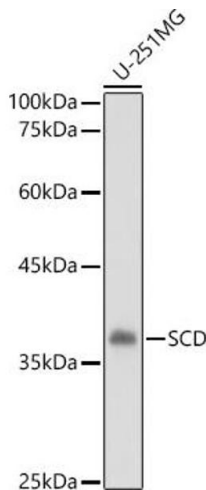
Immunofluorescence

Image 1. Immunofluorescence analysis of cells using [KO Validated] SCD Rabbit pAb (ABIN7270589) at dilution of 1:150 (40x lens). Blue: DAPI for nuclear staining.



Western Blotting

Image 2. Western blot analysis of extracts of various cell lines, using SCD antibody (ABIN7270589) at 1:1000 dilution. Secondary antibody: HRP Goat Anti-Rabbit IgG (H+L) (ABIN1684268 and ABIN3020597) at 1:10000 dilution. Lysates/proteins: 25 µg per lane. Blocking buffer: 3 % nonfat dry milk in TBST. Detection: ECL Basic Kit (RM00020). Exposure time: 1s.



Western Blotting

Image 3. Western blot analysis of extracts of U-251MG cells, using SCD antibody (ABIN7270589) at 1:1000 dilution. Secondary antibody: HRP Goat Anti-Rabbit IgG (H+L) (ABIN1684268 and ABIN3020597) at 1:10000 dilution. Lysates/proteins: 25 µg per lane. Blocking buffer: 3 % nonfat dry milk in TBST. Detection: ECL Basic Kit (RM00020). Exposure time: 3s.

Please check the [product details page](#) for more images. Overall 5 images are available for ABIN7270589.