

Datasheet for ABIN7270602

anti-14-3-3 sigma/SFN antibody



[Go to Product page](#)

2 Images

Overview

Quantity:	100 µL
Target:	14-3-3 sigma/SFN (SFN)
Reactivity:	Human
Host:	Rabbit
Clonality:	Monoclonal
Conjugate:	This 14-3-3 sigma/SFN antibody is un-conjugated
Application:	Western Blotting (WB), Immunohistochemistry (IHC)

Product Details

Purpose:	14-3-3 sigma Rabbit mAb
Immunogen:	A synthesized peptide derived from human 14-3-3 sigma
Isotype:	IgG
Cross-Reactivity:	Human, Mouse
Characteristics:	Monoclonal Antibodies
Purification:	Affinity purification

Target Details

Target:	14-3-3 sigma/SFN (SFN)
Alternative Name:	SFN (SFN Products)
Background:	Adapter protein implicated in the regulation of a large spectrum of both general and specialized

Target Details

signaling pathways. Binds to a large number of partners, usually by recognition of a phosphoserine or phosphothreonine motif. Binding generally results in the modulation of the activity of the binding partner. When bound to KRT17, regulates protein synthesis and epithelial cell growth by stimulating Akt/mTOR pathway. May also regulate MDM2 autoubiquitination and degradation and thereby activate p53/TP53.,YWHAS,Cell Biology & Developmental Biology,Cell Cycle,Cell Type Marker,Cell Type Marker_Neuron marker,Cell Type Marker_Synapse marker,Epigenetics & Nuclear Signaling,G2/M DNA Damage Checkpoint,MAPK-Erk Signaling Pathway,Neuroscience,Signal Transduction,Stem Cells,SFN

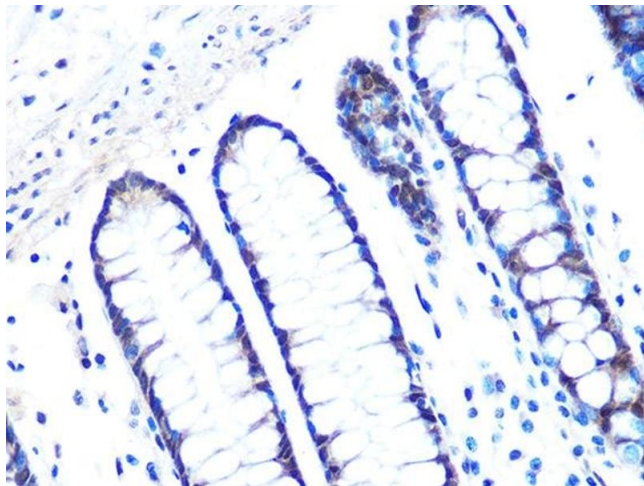
Molecular Weight:	28kDa
Gene ID:	2810
UniProt:	P31947
Pathways:	p53 Signaling , Myometrial Relaxation and Contraction

Application Details

Application Notes:	WB,1:500 - 1:2000,IHC,1:50 - 1:200
Restrictions:	For Research Use only

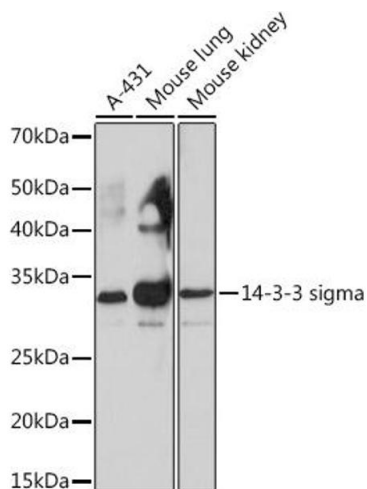
Handling

Format:	Liquid
Buffer:	PBS with 0.02 % sodium azide,0.05 % BSA,50 % glycerol, pH 7.3.
Preservative:	Sodium azide
Precaution of Use:	This product contains Sodium azide: a POISONOUS AND HAZARDOUS SUBSTANCE which should be handled by trained staff only.
Storage:	-20 °C
Storage Comment:	Store at -20°C. Avoid freeze / thaw cycles.



Immunohistochemistry

Image 1. Immunohistochemistry of paraffin-embedded human colon using 14-3-3 sigma Rabbit mAb (ABIN7270602) at dilution of 1:100 (40x lens). Perform microwave antigen retrieval with 10 mM PBS buffer pH 7.2 before commencing with IHC staining protocol.



Western Blotting

Image 2. Western blot analysis of extracts of various cell lines, using 14-3-3 sigma Rabbit mAb (ABIN7270602) at 1:1000 dilution. Secondary antibody: HRP Goat Anti-Rabbit IgG (H+L) (ABIN1684268 and ABIN3020597) at 1:10000 dilution. Lysates/proteins: 25 µg per lane. Blocking buffer: 3 % nonfat dry milk in TBST. Detection: ECL Basic Kit (RM00020). Exposure time: 3 min.