

Datasheet for ABIN7270612
anti-SMAP1 antibody (AA 180-250)



[Go to Product page](#)

4 Images

Overview

Quantity:	100 µL
Target:	SMAP1
Binding Specificity:	AA 180-250
Reactivity:	Human
Host:	Rabbit
Clonality:	Polyclonal
Conjugate:	This SMAP1 antibody is un-conjugated
Application:	Western Blotting (WB), Immunofluorescence (IF)

Product Details

Purpose:	SMAP1 Rabbit pAb
Immunogen:	Recombinant fusion protein containing a sequence corresponding to amino acids 180-250 of human SMAP1 (NP_001037770).
Sequence:	EPEKPAKPLT AEKLQKKDQQ LEPKKSTSPK KAAEPTVDLL GLDGPVAVPV TNGNTTVPPPL NDDLDFGPM I
Isotype:	IgG
Cross-Reactivity:	Human, Mouse, Rat
Characteristics:	Polyclonal Antibodies
Purification:	Affinity purification

Target Details

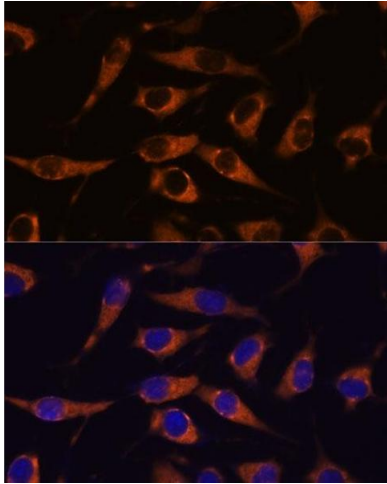
Target:	SMAP1
Alternative Name:	SMAP1 (SMAP1 Products)
Background:	The protein encoded by this gene is similar to the mouse stromal membrane-associated protein-1. This similarity suggests that this human gene product is also a type II membrane glycoprotein involved in the erythropoietic stimulatory activity of stromal cells. Alternate splicing results in multiple transcript variants encoding different isoforms. [provided by RefSeq, Jul 2008],SMAP-1,SMAP1,Signal Transduction,G protein signaling,Signal Transduction,SMAP1
Gene ID:	60682
UniProt:	Q8IYB5

Application Details

Application Notes:	WB,1:500 - 1:2000,IF,1:50 - 1:200
Restrictions:	For Research Use only

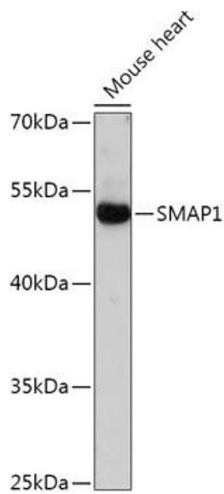
Handling

Format:	Liquid
Buffer:	PBS with 0.02 % sodium azide,50 % glycerol, pH 7.3.
Preservative:	Sodium azide
Precaution of Use:	This product contains Sodium azide: a POISONOUS AND HAZARDOUS SUBSTANCE which should be handled by trained staff only.
Storage:	-20 °C
Storage Comment:	Store at -20°C. Avoid freeze / thaw cycles.



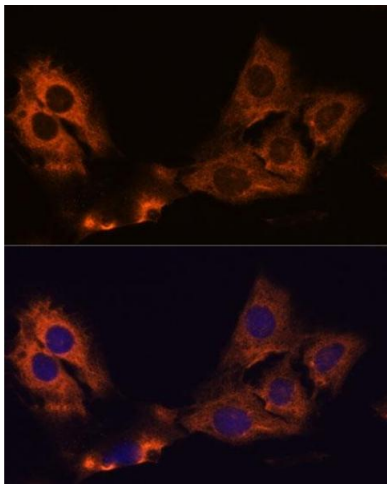
Immunofluorescence

Image 1. Immunofluorescence analysis of L929 cells using SM antibody (ABIN7270612) at dilution of 1:100. Blue: DAPI for nuclear staining.



Western Blotting

Image 2. Western blot analysis of extracts of Mouse heart, using SM antibody (ABIN7270612) at 1:1000 dilution. Secondary antibody: HRP Goat Anti-Rabbit IgG (H+L) (ABIN1684268 and ABIN3020597) at 1:10000 dilution. Lysates/proteins: 25 µg per lane. Blocking buffer: 3 % nonfat dry milk in TBST. Detection: ECL Basic Kit (RM00020). Exposure time: 1s.



Immunofluorescence

Image 3. Immunofluorescence analysis of C6 cells using SM antibody (ABIN7270612) at dilution of 1:100. Blue: DAPI for nuclear staining.

Please check the [product details page](#) for more images. Overall 4 images are available for ABIN7270612.