



[Go to Product page](#)

Datasheet for ABIN7270623
anti-SUCLG1 antibody (AA 41-346)

3 Images

Overview

Quantity:	100 µL
Target:	SUCLG1
Binding Specificity:	AA 41-346
Reactivity:	Human
Host:	Rabbit
Clonality:	Polyclonal
Conjugate:	This SUCLG1 antibody is un-conjugated
Application:	Western Blotting (WB), Immunofluorescence (IF)

Product Details

Purpose:	SUCLG1 Rabbit pAb
Immunogen:	Recombinant fusion protein containing a sequence corresponding to amino acids 41-346 of human SUCLG1 (NP_003840.2).
Sequence:	CSYASRQHL YVDKNTKIIC QGFTGKQGTF HSQQALEYGT KLVGGTTPGK GGQTHLGLPV FNTVKEAKEQ TGATASVIYV PPPFAAAAIN EAIEAEIPLV VCITEGIPQQ DMVRVKHKLL RQEKTRLIGP NCPGVINPGE CKIGIMPGHI HKKGRIGIVS RSGTLTYEAV HQTQTQVGLGQ SLCVGIGGDP FNGTDFIDCL EIFLNDSATE GIILIGEIGG NAEENAAEFL KQHNSGPNSK PVVFSIAGLT APPGRRMGHA GAIAGGKGG AKEKISALQS AGVVVSMSPA QLGTTIYKEF EKRKML
Isotype:	IgG
Cross-Reactivity:	Human, Mouse, Rat
Characteristics:	Polyclonal Antibodies

Product Details

Purification: Affinity purification

Target Details

Target: SUCLG1

Alternative Name: SUCLG1 ([SUCLG1 Products](#))

Background: This gene encodes the alpha subunit of the heterodimeric enzyme succinate coenzyme A ligase. This enzyme is targeted to the mitochondria and catalyzes the conversion of succinyl CoA and ADP or GDP to succinate and ATP or GTP. Mutations in this gene are the cause of the metabolic disorder fatal infantile lactic acidosis and mitochondrial DNA depletion.,SUCLG1,GALPHA,MTDPS9,SUCLA1,Epigenetics & Nuclear Signaling,RNA Binding,Cancer,Signal Transduction,Endocrine & Metabolism,Mitochondrial metabolism,Mitochondrial markers,SUCLG1

Molecular Weight: 36kDa

Gene ID: 8802

UniProt: [P53597](#)

Application Details

Application Notes: WB,1:200 - 1:2000,IF,1:50 - 1:200

Restrictions: For Research Use only

Handling

Format: Liquid

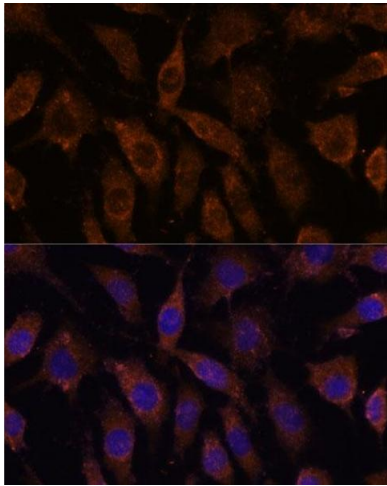
Buffer: PBS with 0.02 % sodium azide,50 % glycerol, pH 7.3.

Preservative: Sodium azide

Precaution of Use: This product contains Sodium azide: a POISONOUS AND HAZARDOUS SUBSTANCE which should be handled by trained staff only.

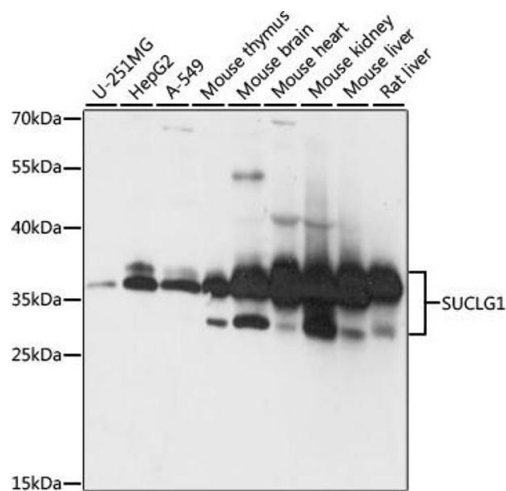
Storage: -20 °C

Storage Comment: Store at -20°C. Avoid freeze / thaw cycles.



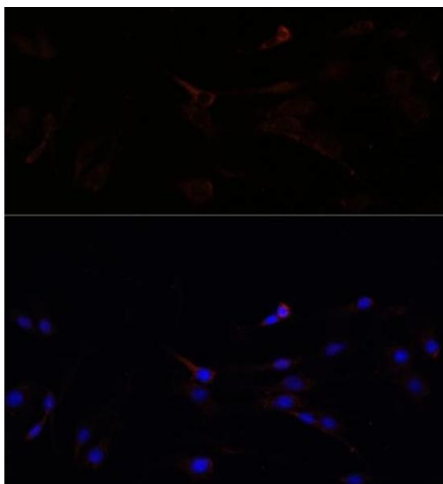
Immunofluorescence

Image 1. Immunofluorescence analysis of L929 cells using SUCLG1 antibody (ABIN7270623) at dilution of 1:100. Blue: DAPI for nuclear staining.



Western Blotting

Image 2. Western blot analysis of extracts of various cell lines, using SUCLG1 antibody (ABIN7270623) at 1:1000 dilution. Secondary antibody: HRP Goat Anti-Rabbit IgG (H+L) (ABIN1684268 and ABIN3020597) at 1:10000 dilution. Lysates/proteins: 25 µg per lane. Blocking buffer: 3 % nonfat dry milk in TBST. Detection: ECL Basic Kit (RM00020). Exposure time: 5s.



Immunofluorescence

Image 3. Immunofluorescence analysis of C6 cells using SUCLG1 antibody (ABIN7270623) at dilution of 1:100. Blue: DAPI for nuclear staining.