

[Go to Product page](#)

Datasheet for ABIN7270627

anti-SUMF2 antibody (AA 45-320)**2** Images

Overview

Quantity:	100 µL
Target:	SUMF2
Binding Specificity:	AA 45-320
Reactivity:	Human
Host:	Rabbit
Clonality:	Polyclonal
Conjugate:	This SUMF2 antibody is un-conjugated
Application:	Western Blotting (WB), Immunofluorescence (IF)

Product Details

Purpose:	SUMF2 Rabbit pAb
Immunogen:	Recombinant fusion protein containing a sequence corresponding to amino acids 45-320 of human SUMF2 (NP_056226.2).
Sequence:	QATSMVQLQG GRFLMGTTNSP DSRDGGPVR EATVKPFAID IFPVTNKDFR DVFREKKYRT EAEMFGWSFV FEDFVSDLR NKATQPMKSV LWWLPVEKAF WRQPAGPGSG IRERLEHPVL HVSWNDARAY CAWRGKRLPT EEEWEFAARG GLKGQVYPWG NWFQPNRTNL WQGKFPKGDK AEDGFHGVSP VNAFPAQNNY GLYDLLGNVW EWTASPYQAA EQDMRVLRGA SWIDTADGSA NHRARVTTTRM GNTPDSASDN LGFRCAADAG RPPGEL
Isotype:	IgG
Cross-Reactivity:	Human, Mouse, Rat
Characteristics:	Polyclonal Antibodies

Product Details

Purification: Affinity purification

Target Details

Target: SUMF2

Alternative Name: SUMF2 ([SUMF2 Products](#))

Background: The catalytic sites of sulfatases are only active if they contain a unique amino acid, C-alpha-formylglycine (FGly). The FGly residue is posttranslationally generated from a cysteine by enzymes with FGly-generating activity. The gene described in this record is a member of the sulfatase-modifying factor family and encodes a protein with a DUF323 domain that localizes to the lumen of the endoplasmic reticulum. This protein has low levels of FGly-generating activity but can heterodimerize with another family member - a protein with high levels of FGly-generating activity. Alternate transcriptional splice variants, encoding different isoforms, have been characterized. [provided by RefSeq, Jul 2008],pFGE,SUMF2,SUMF2

Gene ID: 25870

UniProt: [Q8NBJ7](#)

Application Details

Application Notes: WB,1:500 - 1:2000,IF,1:50 - 1:100

Restrictions: For Research Use only

Handling

Format: Liquid

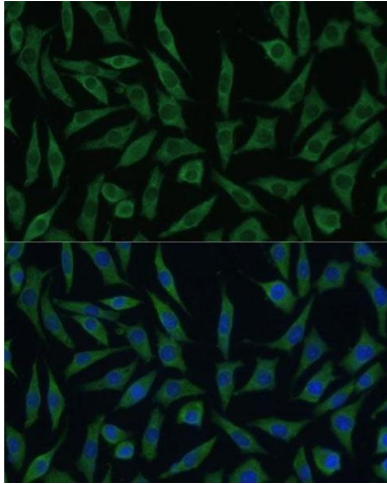
Buffer: PBS with 0.02 % sodium azide,50 % glycerol, pH 7.3.

Preservative: Sodium azide

Precaution of Use: This product contains Sodium azide: a POISONOUS AND HAZARDOUS SUBSTANCE which should be handled by trained staff only.

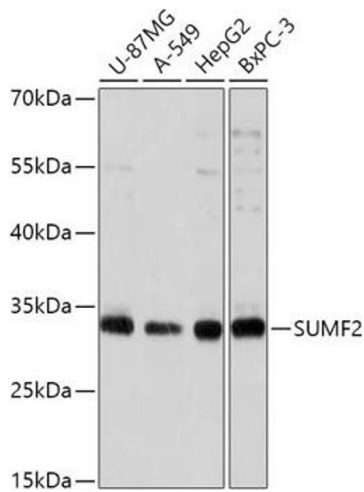
Storage: -20 °C

Storage Comment: Store at -20°C. Avoid freeze / thaw cycles.



Immunofluorescence

Image 1. Immunofluorescence analysis of L929 cells using SUMF2 antibody (ABIN7270627) at dilution of 1:100. Blue: DAPI for nuclear staining.



Western Blotting

Image 2. Western blot analysis of extracts of various cell lines, using SUMF2 antibody (ABIN7270627) at 1:1000 dilution. Secondary antibody: HRP Goat Anti-Rabbit IgG (H+L) (ABIN1684268 and ABIN3020597) at 1:10000 dilution. Lysates/proteins: 25 µg per lane. Blocking buffer: 3 % nonfat dry milk in TBST. Detection: ECL Basic Kit (RM00020). Exposure time: 10s.