

Datasheet for ABIN7270640

anti-SOCS1 antibody

5 Images

[Go to Product page](#)

Overview

Quantity:	100 µL
Target:	SOCS1
Reactivity:	Human
Host:	Rabbit
Clonality:	Monoclonal
Conjugate:	This SOCS1 antibody is un-conjugated
Application:	Immunohistochemistry (IHC), Immunofluorescence (IF)

Product Details

Purpose:	SOCS1 Rabbit mAb
Immunogen:	Recombinant protein of human SOCS1.
Isotype:	IgG
Cross-Reactivity:	Human, Mouse, Rat
Characteristics:	Monoclonal Antibodies
Purification:	Affinity purification

Target Details

Target:	SOCS1
Alternative Name:	SOCS1 (SOCS1 Products)
Background:	This gene encodes a member of the STAT-induced STAT inhibitor (SSI), also known as

Target Details

suppressor of cytokine signaling (SOCS), family. SSI family members are cytokine-inducible negative regulators of cytokine signaling. The expression of this gene can be induced by a subset of cytokines, including IL2, IL3 erythropoietin (EPO), CSF2/GM-CSF, and interferon (IFN)-gamma. The protein encoded by this gene functions downstream of cytokine receptors, and takes part in a negative feedback loop to attenuate cytokine signaling. Knockout studies in mice suggested the role of this gene as a modulator of IFN-gamma action, which is required for normal postnatal growth and survival.,SOCS1,CIS1,CISH1,JAB,SOCS-1,SSI-1,SSI1,TIP3,TIP-3,Epigenetics & Nuclear Signaling,Signal Transduction,Cell Biology & Developmental Biology,Ubiquitin,Ubiquitin-Proteasome Signaling Pathway,Immunology & Inflammation,IL-6 Receptor Signaling Pathway,Toll-like Receptor Signaling Pathway,SOCS1

Molecular Weight: 23kDa

Gene ID: 8651

UniProt: [O15524](#)

Pathways: [JAK-STAT Signaling](#), [Interferon-gamma Pathway](#), [TLR Signaling](#), [Response to Growth Hormone Stimulus](#)

Application Details

Application Notes: IHC,1:50 - 1:200,IF,1:50 - 1:200

Restrictions: For Research Use only

Handling

Format: Liquid

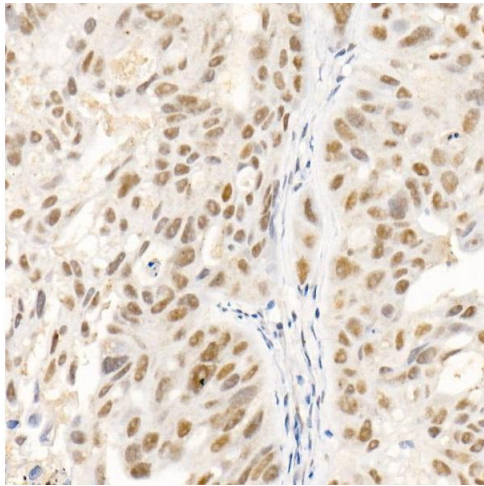
Buffer: PBS with 0.02 % sodium azide,50 % glycerol, pH 7.3.

Preservative: Sodium azide

Precaution of Use: This product contains Sodium azide: a POISONOUS AND HAZARDOUS SUBSTANCE which should be handled by trained staff only.

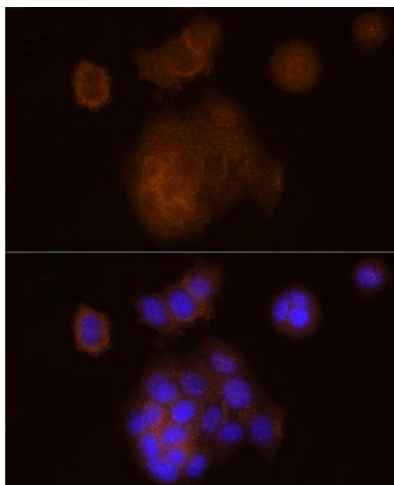
Storage: -20 °C

Storage Comment: Store at -20°C. Avoid freeze / thaw cycles.



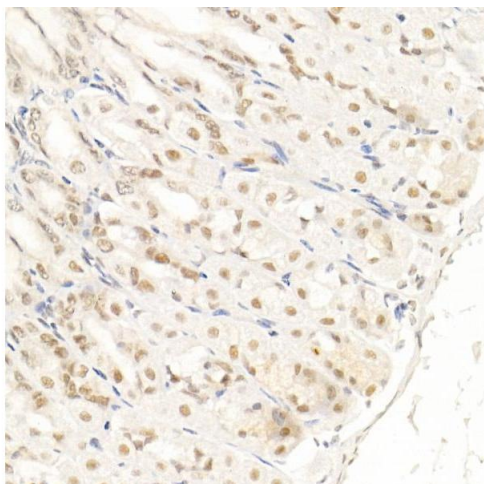
Immunohistochemistry

Image 1. Immunohistochemistry of paraffin-embedded human colon carcinoma using SOCS1 Rabbit mAb (ABIN7270640) at dilution of 1:100 (40x lens). Perform high pressure antigen retrieval with 10 mM citrate buffer pH 6.0 before commencing with IHC staining protocol.



Immunofluorescence

Image 2. Immunofluorescence analysis of MCF7 cells using SOCS1 Rabbit mAb (ABIN7270640) at dilution of 1:100 (40x lens). Blue: DAPI for nuclear staining.



Immunohistochemistry

Image 3. Immunohistochemistry of paraffin-embedded mouse stomach using SOCS1 Rabbit mAb (ABIN7270640) at dilution of 1:100 (40x lens). Perform high pressure antigen retrieval with 10 mM citrate buffer pH 6.0 before commencing with IHC staining protocol.

Please check the [product details page](#) for more images. Overall 5 images are available for ABIN7270640.