



[Go to Product page](#)

Datasheet for ABIN7270643
anti-SOGA1 antibody (AA 650-750)

1 Image

Overview

Quantity:	100 µL
Target:	SOGA1
Binding Specificity:	AA 650-750
Reactivity:	Human
Host:	Rabbit
Clonality:	Polyclonal
Conjugate:	This SOGA1 antibody is un-conjugated
Application:	Western Blotting (WB)

Product Details

Purpose:	SOGA1 Rabbit pAb
Immunogen:	Recombinant fusion protein containing a sequence corresponding to amino acids 650-750 of human SOGA1 (NP_542194.2).
Sequence:	AEVLPGLREQ AALVSKAIDV LVADANGFTA GLRLCLDNEC ADFRLHEAPD NSEGPRDTKL IHAILVRLSV LQQLNAFTR KADAVLGCSV KEQQESFSSL P
Isotype:	IgG
Cross-Reactivity:	Human, Mouse, Rat
Characteristics:	Polyclonal Antibodies
Purification:	Affinity purification

Target Details

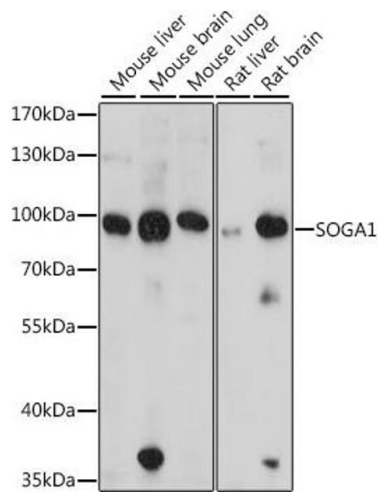
Target:	SOGA1
Alternative Name:	SOGA1 (SOGA1 Products)
Background:	Regulates autophagy by playing a role in the reduction of glucose production in an adiponectin- and insulin-dependent manner.,SOGA1,C20orf117,KIAA0889,SOGA,Cell Biology & Developmental Biology,SOGA1
Molecular Weight:	55kDa/115kDa/159kDa/183kDa
Gene ID:	140710
UniProt:	O94964

Application Details

Application Notes:	WB,1:500 - 1:2000
Restrictions:	For Research Use only

Handling

Format:	Liquid
Buffer:	PBS with 0.02 % sodium azide,50 % glycerol, pH 7.3.
Preservative:	Sodium azide
Precaution of Use:	This product contains Sodium azide: a POISONOUS AND HAZARDOUS SUBSTANCE which should be handled by trained staff only.
Storage:	-20 °C
Storage Comment:	Store at -20°C. Avoid freeze / thaw cycles.



Western Blotting

Image 1. Western blot analysis of extracts of various cell lines, using SOG antibody (6597) at 1:1000 dilution. Secondary antibody: HRP Goat Anti-Rabbit IgG (H+L) (ABIN1684268 and ABIN3020597) at 1:10000 dilution. Lysates/proteins: 25 µg per lane. Blocking buffer: 3% nonfat dry milk in TBST. Detection: ECL Basic Kit (RM00020). Exposure time: 15s.