



[Go to Product page](#)

Datasheet for ABIN7270654
anti-SWAP70 antibody (AA 316-585)

5 Images

Overview

Quantity:	100 µL
Target:	SWAP70
Binding Specificity:	AA 316-585
Reactivity:	Human
Host:	Rabbit
Clonality:	Polyclonal
Conjugate:	This SWAP70 antibody is un-conjugated
Application:	Western Blotting (WB), Immunohistochemistry (IHC), Immunofluorescence (IF)

Product Details

Purpose:	SWAP70 Rabbit pAb
Immunogen:	Recombinant fusion protein containing a sequence corresponding to amino acids 316-585 of human SWAP70 (NP_055870.2).
Sequence:	HKEARQRRKE LRKKQLAEQE ELERQMKELQ AANESKQQEL EAVRKKLEEA ASRAAEKK RLQTQVELQA RFSTELEREK LIRQQMEEQV AQKSSELEQY LQRVRELEDM YLKLQEALED ERQARQDEET VRKLQARLLE EESSKRAELE KWHLEQQQAI QTTEAEKQEL ENQRVLKEQA LQEAMEQLEQ LELERKQALE QYEEVKKKLE MATNKTCSWK DKVAHHEGLI RLIEPGSKNP HLITNWGPAA FTEAELEERE KNWKEKKTTE
Isotype:	IgG
Cross-Reactivity:	Human, Mouse, Rat
Characteristics:	Polyclonal Antibodies

Product Details

Purification: Affinity purification

Target Details

Target: SWAP70

Alternative Name: SWAP70 ([SWAP70 Products](#))

Background: Phosphatidylinositol 3,4,5-trisphosphate-dependent guanine nucleotide exchange factor (GEF which, independently of RAS, transduces signals from tyrosine kinase receptors to RAC. It also mediates signaling of membrane ruffling. Regulates the actin cytoskeleton as an effector or adapter protein in response to agonist stimulated phosphatidylinositol (3,4-bisphosphate production and cell protrusion (By similarity.,SWAP70,HSPC321,SWAP-70,Signal Transduction,Immunology & Inflammation,Neuroscience,Calcium Signaling,SWAP70

Molecular Weight: 68kDa

Gene ID: 23075

UniProt: [Q9UH65](#)

Pathways: [Production of Molecular Mediator of Immune Response](#)

Application Details

Application Notes: WB,1:500 - 1:2000,IHC,1:50 - 1:200,IF,1:50 - 1:200

Restrictions: For Research Use only

Handling

Format: Liquid

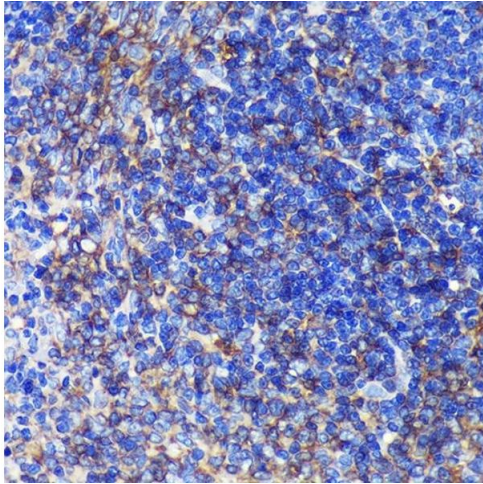
Buffer: PBS with 0.02 % sodium azide,50 % glycerol, pH 7.3.

Preservative: Sodium azide

Precaution of Use: This product contains Sodium azide: a POISONOUS AND HAZARDOUS SUBSTANCE which should be handled by trained staff only.

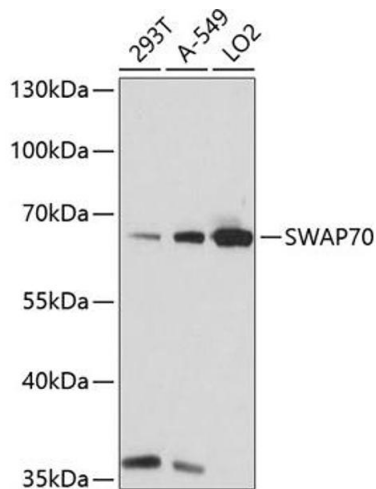
Storage: -20 °C

Storage Comment: Store at -20°C. Avoid freeze / thaw cycles.



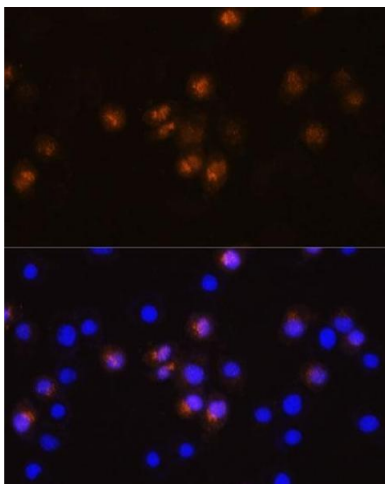
Immunohistochemistry

Image 1. Immunohistochemistry of paraffin-embedded Rat spleen using SW Rabbit pAb (ABIN7270654) at dilution of 1:100 (40x lens). Perform microwave antigen retrieval with 10 mM PBS buffer pH 7.2 before commencing with IHC staining protocol.



Western Blotting

Image 2. Western blot analysis of extracts of various cell lines, using SW antibody (ABIN7270654) at 1:1000 dilution. Secondary antibody: HRP Goat Anti-Rabbit IgG (H+L) (ABIN1684268 and ABIN3020597) at 1:10000 dilution. Lysates/proteins: 25 µg per lane. Blocking buffer: 3 % nonfat dry milk in TBST. Detection: ECL Basic Kit (RM00020). Exposure time: 5s.



Immunofluorescence

Image 3. Immunofluorescence analysis of L929 cells using SW antibody (ABIN7270654) at dilution of 1:100. Blue: DAPI for nuclear staining.

Please check the [product details page](#) for more images. Overall 5 images are available for ABIN7270654.