

Datasheet for ABIN7270655  
**anti-SMARCA4 antibody**

## 6 Images

[Go to Product page](#)

## Overview

Quantity:	100 µL
Target:	SMARCA4
Reactivity:	Human
Host:	Rabbit
Clonality:	Monoclonal
Conjugate:	This SMARCA4 antibody is un-conjugated
Application:	Western Blotting (WB), Immunohistochemistry (IHC), Immunofluorescence (IF)

## Product Details

Purpose:	BRG1/SMARCA4 Rabbit mAb
Immunogen:	A synthesized peptide derived from human BRG1/SMARCA4.
Isotype:	IgG
Cross-Reactivity:	Human, Mouse, Rat
Characteristics:	Monoclonal Antibodies
Purification:	Affinity purification

## Target Details

Target:	SMARCA4
Alternative Name:	SMARCA4 ( <a href="#">SMARCA4 Products</a> )
Name:	

## Target Details

**Background:** The protein encoded by this gene is a member of the SWI/SNF family of proteins and is similar to the brahma protein of Drosophila. Members of this family have helicase and ATPase activities and are thought to regulate transcription of certain genes by altering the chromatin structure around those genes. The encoded protein is part of the large ATP-dependent chromatin remodeling complex SNF/SWI, which is required for transcriptional activation of genes normally repressed by chromatin. In addition, this protein can bind BRCA1, as well as regulate the expression of the tumorigenic protein CD44. Mutations in this gene cause rhabdoid tumor predisposition syndrome type 2. Multiple transcript variants encoding different isoforms have been found for this gene. [provided by RefSeq, May 2012],BAF190,BAF190A,BRG1,CSS4,MRD16,RTPS2,SNF2,SNF2L4,SNF2LB,SWI2,hSNF2b,SMARCA4,Cancer,Cell Type Marker,Cell Type Marker\_Neural Stem Cell marker,Chromatin Remodeling,Epigenetics & Nuclear Signaling,Neuroscience,Stem Cells,Tumor suppressors,SMARCA4

**Molecular Weight:** 185kDa

**Gene ID:** 6597

**UniProt:** [P51532](#)

**Pathways:** [Intracellular Steroid Hormone Receptor Signaling Pathway](#), [Regulation of Intracellular Steroid Hormone Receptor Signaling](#), [Stem Cell Maintenance](#)

## Application Details

**Application Notes:** WB,1:500 - 1:2000,IHC,1:50 - 1:200,IF,1:50 - 1:200

**Restrictions:** For Research Use only

## Handling

**Format:** Liquid

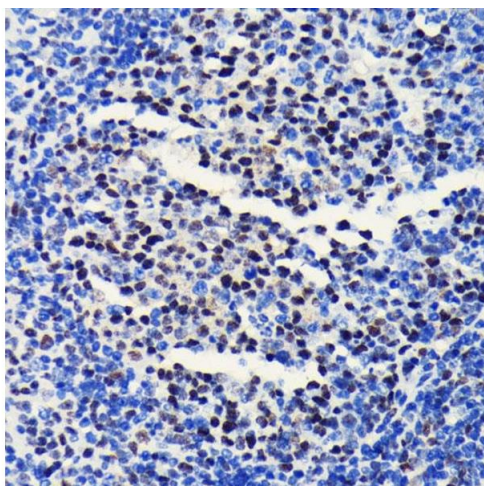
**Buffer:** PBS with 0.02 % sodium azide,0.05 % BSA,50 % glycerol, pH 7.3.

**Preservative:** Sodium azide

**Precaution of Use:** This product contains Sodium azide: a POISONOUS AND HAZARDOUS SUBSTANCE which should be handled by trained staff only.

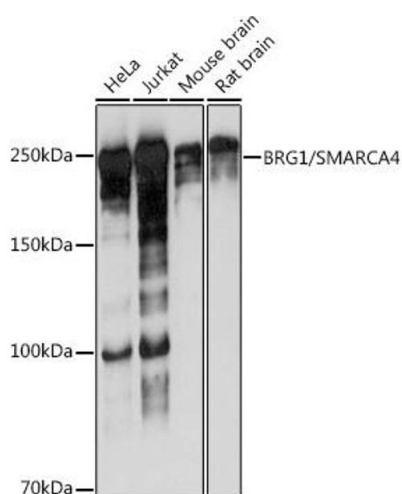
**Storage:** -20 °C

**Storage Comment:** Store at -20°C. Avoid freeze / thaw cycles.



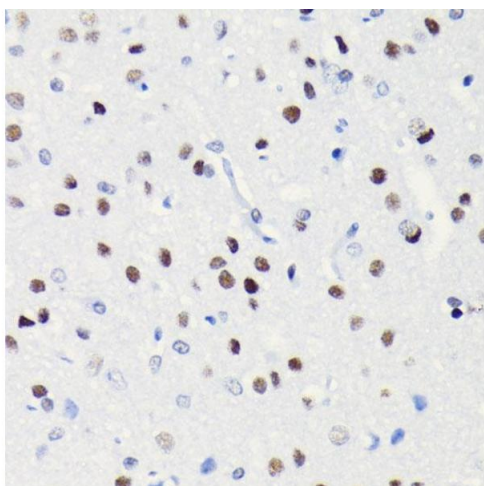
#### Immunohistochemistry

**Image 1.** Immunohistochemistry of paraffin-embedded mouse spleen using BRG1/SM antibody (ABIN7270655) at dilution of 1:100 (40x lens). Perform microwave antigen retrieval with 10 mM PBS buffer pH 7.2 before commencing with IHC staining protocol.



#### Western Blotting

**Image 2.** Western blot analysis of extracts of various cell lines, using BRG1/SM antibody (ABIN7270655) at 1:1000 dilution. Secondary antibody: HRP Goat Anti-Rabbit IgG (H+L) (ABIN1684268 and ABIN3020597) at 1:10000 dilution. Lysates/proteins: 25 µg per lane. Blocking buffer: 3 % nonfat dry milk in TBST. Detection: ECL Basic Kit (RM00020). Exposure time: 3s.



#### Immunohistochemistry

**Image 3.** Immunohistochemistry of paraffin-embedded rat brain using BRG1/SM antibody (ABIN7270655) at dilution of 1:100 (40x lens). Perform microwave antigen retrieval with 10 mM PBS buffer pH 7.2 before commencing with IHC staining protocol.

Please check the [product details page](#) for more images. Overall 6 images are available for ABIN7270655.