

Datasheet for ABIN7270657
anti-SMARCB1 antibody[Go to Product page](#)

7 Images

Overview

Quantity:	100 µL
Target:	SMARCB1
Reactivity:	Human
Host:	Rabbit
Clonality:	Monoclonal
Conjugate:	This SMARCB1 antibody is un-conjugated
Application:	Western Blotting (WB), Immunofluorescence (IF)

Product Details

Purpose:	[KO Validated] SMARCB1/SNF5 Rabbit mAb
Immunogen:	A synthesized peptide derived from human SMARCB1/SMARCB1/SNF5
Isotype:	IgG
Cross-Reactivity:	Human, Mouse, Rat
Characteristics:	Monoclonal Antibodies
Purification:	Affinity purification
Grade:	KO Validated

Target Details

Target:	SMARCB1
Alternative Name:	SMARCB1 (SMARCB1 Products)

Target Details

Background: The protein encoded by this gene is part of a complex that relieves repressive chromatin structures, allowing the transcriptional machinery to access its targets more effectively. The encoded nuclear protein may also bind to and enhance the DNA joining activity of HIV-1 integrase. This gene has been found to be a tumor suppressor, and mutations in it have been associated with malignant rhabdoid tumors. Alternatively spliced transcript variants have been found for this gene. [provided by RefSeq, Dec 2015],BAF47, CSS3, INI1, MRD15, PPP1R144, RDT, RTPS1, SNF5, SNF5L1, SWNTS1, Sfh1p, Snr1, hSNFS,Apoptosis,Cancer,Cell Biology & Developmental Biology,Chromatin Remodeling,Epigenetics & Nuclear Signaling,Tumor suppressors,SMARCB1

Molecular Weight: 44kDa

Gene ID: 6598

UniProt: [Q12824](#)

Application Details

Application Notes: WB,1:500 - 1:2000, IF,1:50 - 1:200

Restrictions: For Research Use only

Handling

Format: Liquid

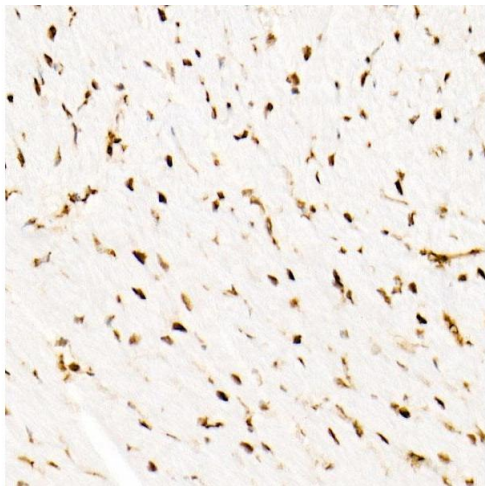
Buffer: PBS with 0.02 % sodium azide,0.05 % BSA,50 % glycerol, pH 7.3.

Preservative: Sodium azide

Precaution of Use: This product contains Sodium azide: a POISONOUS AND HAZARDOUS SUBSTANCE which should be handled by trained staff only.

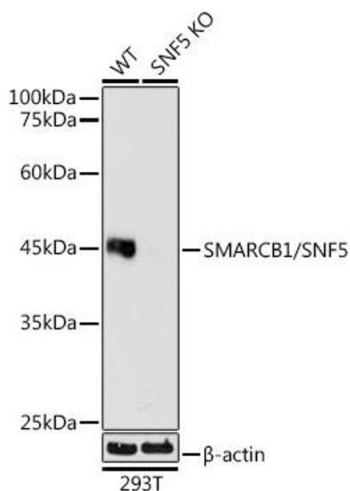
Storage: -20 °C

Storage Comment: Store at -20°C. Avoid freeze / thaw cycles.



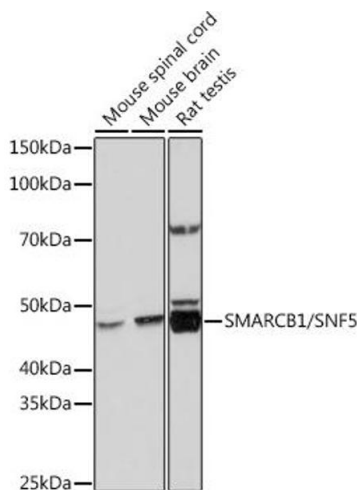
Immunohistochemistry

Image 1. Immunohistochemistry of paraffin-embedded Mouse heart using SM/SNF5 antibody (ABIN7270657) at dilution of 1:1000 (40x lens). Perform high pressure antigen retrieval with 10 mM Tris/EDTA buffer pH 9.0 before commencing with IHC staining protocol.



Western Blotting

Image 2. Western blot analysis of extracts from wild type (WT) and SM/SNF5 knockout (KO) 293T cells, using SM/SNF5 antibody (ABIN7270657) at 1:1000 dilution. Secondary antibody: HRP Goat Anti-Rabbit IgG (H+L) (ABIN1684268 and ABIN3020597) at 1:10000 dilution. Lysates/proteins: 25 µg per lane. Blocking buffer: 3 % nonfat dry milk in TBST. Detection: ECL Basic Kit (RM00020). Exposure time: 10s.



Western Blotting

Image 3. Western blot analysis of extracts of various cell lines, using SM/SNF5 Rabbit mAb (ABIN7270657) at 1:1000 dilution. Secondary antibody: HRP Goat Anti-Rabbit IgG (H+L) (ABIN1684268 and ABIN3020597) at 1:10000 dilution. Lysates/proteins: 25 µg per lane. Blocking buffer: 3 % nonfat dry milk in TBST. Detection: ECL Basic Kit (RM00020). Exposure time: 10s.

Please check the [product details page](#) for more images. Overall 7 images are available for ABIN7270657.