

Datasheet for ABIN7270658
anti-SMARCC1 antibody



[Go to Product page](#)

4 Images

Overview

Quantity:	100 µL
Target:	SMARCC1
Reactivity:	Human
Host:	Rabbit
Clonality:	Monoclonal
Conjugate:	This SMARCC1 antibody is un-conjugated
Application:	Western Blotting (WB), Immunofluorescence (IF), Chromatin Immunoprecipitation (ChIP)

Product Details

Purpose:	SMARCC1/BAF155 Rabbit mAb
Immunogen:	A synthesized peptide derived from human SMARCC1/BAF155
Isotype:	IgG
Cross-Reactivity:	Human, Mouse
Characteristics:	Monoclonal Antibodies
Purification:	Affinity purification

Target Details

Target:	SMARCC1
Alternative Name:	SMARCC1
Background:	The protein encoded by this gene is a member of the SWI/SNF family of proteins, whose

Target Details

members display helicase and ATPase activities and which are thought to regulate transcription of certain genes by altering the chromatin structure around those genes. The encoded protein is part of the large ATP-dependent chromatin remodeling complex SNF/SWI and contains a predicted leucine zipper motif typical of many transcription factors. [provided by RefSeq, Jul 2008],BAF155, CRACC1, Rsc8, SRG3, SWI3,Chromatin Remodeling,Epigenetics & Nuclear Signaling,SMARCC1

Molecular Weight: 155kDa

Gene ID: 6599

UniProt: [Q92922](#)

Pathways: [Chromatin Binding](#)

Application Details

Application Notes: WB,1:500 - 1:2000,IF,1:50 - 1:200,ChIP,1:50 - 1:200

Restrictions: For Research Use only

Handling

Format: Liquid

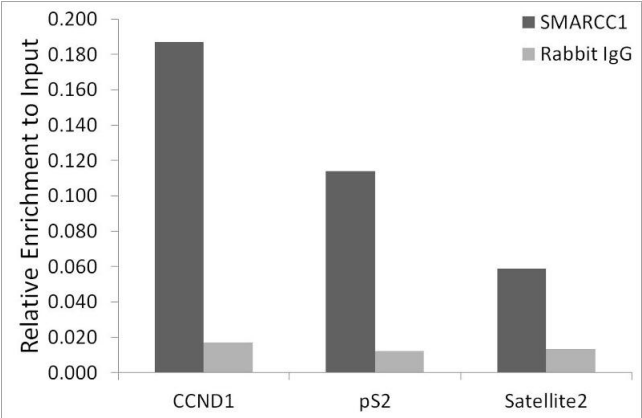
Buffer: PBS with 0.02 % sodium azide,0.05 % BSA,50 % glycerol, pH 7.3.

Preservative: Sodium azide

Precaution of Use: This product contains Sodium azide: a POISONOUS AND HAZARDOUS SUBSTANCE which should be handled by trained staff only.

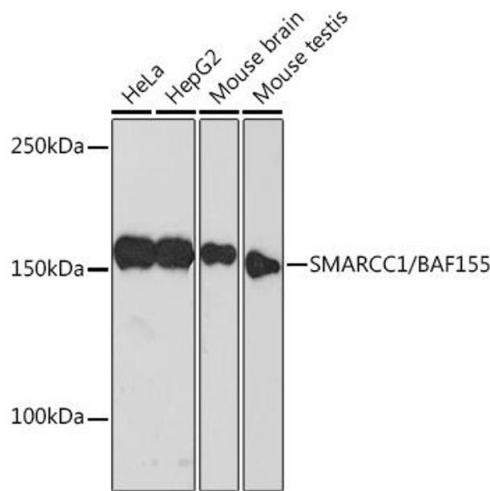
Storage: -20 °C

Storage Comment: Store at -20°C. Avoid freeze / thaw cycles.



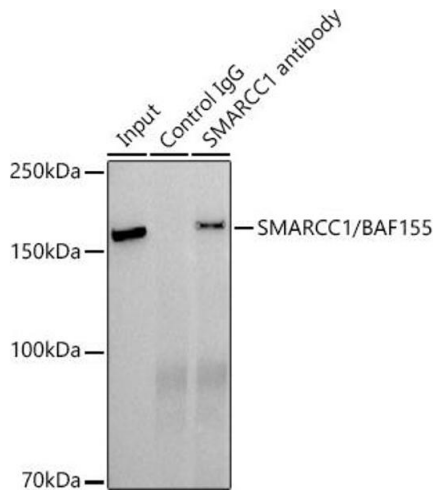
Chromatin Immunoprecipitation

Image 1. Chromatin immunoprecipitation analysis of extracts of MCF7 beta-estradiol cells, using SM/B antibody and rabbit IgG. The amount of immunoprecipitated DNA was checked by quantitative PCR. Histogram was constructed by the ratios of the immunoprecipitated DNA to the input.



Western Blotting

Image 2. Western blot analysis of extracts of various cell lines, using SM/B Rabbit mAb at 1:500 dilution. Secondary antibody: HRP Goat Anti-Rabbit IgG (H+L) (ABIN1684268 and ABIN3020597) at 1:10000 dilution. Lysates/proteins: 25 µg per lane. Blocking buffer: 3 % nonfat dry milk in TBST. Detection: ECL Basic Kit (RM00020). Exposure time: 3 min.



Immunoprecipitation

Image 3. Immunoprecipitation analysis of 300 µg extracts of HepG2 cells using 3 µg SM/B antibody. Western blot was performed from the immunoprecipitate using SM/B antibody at a dilution of 1:500.

Please check the [product details page](#) for more images. Overall 4 images are available for ABIN7270658.