



Datasheet for ABIN7270659
anti-SMARCD3 antibody



[Go to Product page](#)

1 Image

Overview

Quantity:	100 µL
Target:	SMARCD3
Reactivity:	Human
Host:	Rabbit
Clonality:	Polyclonal
Conjugate:	This SMARCD3 antibody is un-conjugated
Application:	Western Blotting (WB)

Product Details

Purpose:	SMARCD3 Rabbit pAb
Immunogen:	Recombinant protein of human SMARCD3.
Isotype:	IgG
Cross-Reactivity:	Human, Mouse, Rat
Characteristics:	Polyclonal Antibodies
Purification:	Affinity purification

Target Details

Target:	SMARCD3
Alternative Name:	SMARCD3 (SMARCD3 Products)
Background:	The protein encoded by this gene is a member of the SWI/SNF family of proteins, whose

Target Details

members display helicase and ATPase activities and which are thought to regulate transcription of certain genes by altering the chromatin structure around those genes. The encoded protein is part of the large ATP-dependent chromatin remodeling complex SNF/SWI and has sequence similarity to the yeast Swp73 protein. Multiple alternatively spliced transcript variants have been found for this gene, but the biological validity of some variants has not been determined.,Rsc6p, BAF60C, CRACD3,SMARCD3

Molecular Weight: 55kDa

Gene ID: 6604

UniProt: [Q6STE5](#)

Pathways: [Regulation of Lipid Metabolism by PPARalpha](#)

Application Details

Application Notes: WB,1:1000 - 1:2000

Restrictions: For Research Use only

Handling

Format: Liquid

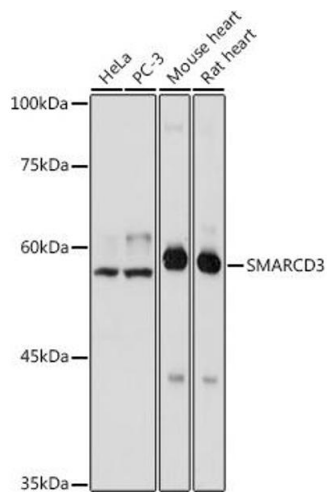
Buffer: PBS with 0.02 % sodium azide,50 % glycerol, pH 7.3.

Preservative: Sodium azide

Precaution of Use: This product contains Sodium azide: a POISONOUS AND HAZARDOUS SUBSTANCE which should be handled by trained staff only.

Storage: -20 °C

Storage Comment: Store at -20°C. Avoid freeze / thaw cycles.



Western Blotting

Image 1. Western blot analysis of extracts of various cell lines, using SM antibody at 1:1000 dilution. Secondary antibody: HRP Goat Anti-Rabbit IgG (H+L) (ABIN1684268 and ABIN3020597) at 1:10000 dilution. Lysates/proteins: 25 µg per lane. Blocking buffer: 3% nonfat dry milk in TBST. Detection: ECL Basic Kit (RM00020). Exposure time: 1s.