

Datasheet for ABIN7270662

anti-SYN2 antibody[Go to Product page](#)**1** Image

Overview

Quantity:	100 µL
Target:	SYN2
Reactivity:	Human
Host:	Rabbit
Clonality:	Monoclonal
Conjugate:	This SYN2 antibody is un-conjugated
Application:	Western Blotting (WB), Immunofluorescence (IF)

Product Details

Purpose:	Synapsin II Rabbit mAb
Immunogen:	A synthesized peptide derived from human Synapsin II
Isotype:	IgG
Cross-Reactivity:	Human, Mouse, Rat
Characteristics:	Monoclonal Antibodies
Purification:	Affinity purification

Target Details

Target:	SYN2
Alternative Name:	SYN2 (SYN2 Products)
Background:	This gene is a member of the synapsin gene family. Synapsins encode neuronal

Target Details

phosphoproteins which associate with the cytoplasmic surface of synaptic vesicles. Family members are characterized by common protein domains, and they are implicated in synaptogenesis and the modulation of neurotransmitter release, suggesting a potential role in several neuropsychiatric diseases. This member of the synapsin family encodes a neuron-specific phosphoprotein that selectively binds to small synaptic vesicles in the presynaptic nerve terminal. Polymorphisms in this gene are associated with abnormal presynaptic function and related neuronal disorders, including autism, epilepsy, bipolar disorder and schizophrenia. Alternative splicing of this gene results in multiple transcript variants. The tissue inhibitor of metalloproteinase 4 gene is located within an intron of this gene and is transcribed in the opposite direction. [provided by RefSeq, Feb 2014],SYNII,Cell Type Marker,Cell Type Marker_Neuron marker,Cell Type Marker_Synapse marker,G protein signaling,G protein signaling_G-Protein-Coupled Receptors Signaling to MAPK/Erk,Neuroscience,Signal Transduction,SYN2

Molecular Weight: 63kDa

Gene ID: 6854

UniProt: [Q92777](#)

Application Details

Application Notes: WB,1:500 - 1:2000,IF,1:50 - 1:200

Restrictions: For Research Use only

Handling

Format: Liquid

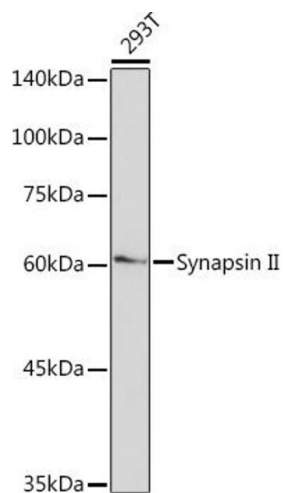
Buffer: PBS with 0.02 % sodium azide,0.05 % BSA,50 % glycerol, pH 7.3.

Preservative: Sodium azide

Precaution of Use: This product contains Sodium azide: a POISONOUS AND HAZARDOUS SUBSTANCE which should be handled by trained staff only.

Storage: -20 °C

Storage Comment: Store at -20°C. Avoid freeze / thaw cycles.



Western Blotting

Image 1. Western blot analysis of extracts of 293T cells, using Synapsin II Rabbit mAb (ABIN7270662) at 1:1000 dilution. Secondary antibody: HRP Goat Anti-Rabbit IgG (H+L) (ABIN1684268 and ABIN3020597) at 1:10000 dilution. Lysates/proteins: 25 µg per lane. Blocking buffer: 3 % nonfat dry milk in TBST. Detection: ECL Basic Kit (RM00020). Exposure time: 90s.