

Datasheet for ABIN7270685  
**anti-Syntaxin 1B antibody**

## 7 Images

[Go to Product page](#)

## Overview

Quantity:	100 µL
Target:	Syntaxin 1B (STX1B)
Reactivity:	Human
Host:	Rabbit
Clonality:	Monoclonal
Conjugate:	This Syntaxin 1B antibody is un-conjugated
Application:	Western Blotting (WB), Immunohistochemistry (IHC), Immunofluorescence (IF)

## Product Details

Purpose:	Syntaxin Rabbit mAb
Immunogen:	A synthesized peptide derived from human Syntaxin
Isotype:	IgG
Cross-Reactivity:	Human, Mouse, Rat
Characteristics:	Monoclonal Antibodies
Purification:	Affinity purification

## Target Details

Target:	Syntaxin 1B (STX1B)
Alternative Name:	STX1B ( <a href="#">STX1B Products</a> )
Background:	The protein encoded by this gene belongs to a family of proteins thought to play a role in the

## Target Details

exocytosis of synaptic vesicles. Vesicle exocytosis releases vesicular contents and is important to various cellular functions. For instance, the secretion of transmitters from neurons plays an important role in synaptic transmission. After exocytosis, the membrane and proteins from the vesicle are retrieved from the plasma membrane through the process of endocytosis. Mutations in this gene have been identified as one cause of fever-associated epilepsy syndromes. A possible link between this gene and Parkinson's disease has also been suggested. [provided by RefSeq, Jan 2015],GEFSP9, STX1B1, STX1B2,STX1B

Molecular Weight: 33kDa

Gene ID: 112755

UniProt: [P61266](#)

## Application Details

Application Notes: WB,1:500 - 1:2000,IHC,1:50 - 1:200,IF,1:50 - 1:200

Restrictions: For Research Use only

## Handling

Format: Liquid

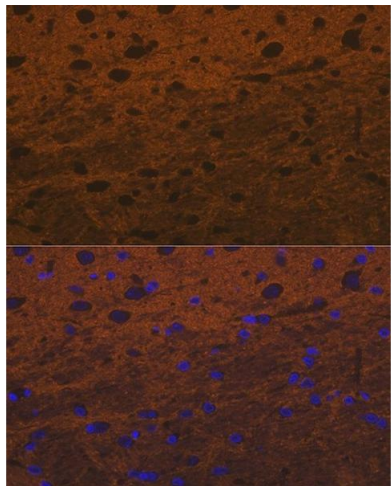
Buffer: PBS with 0.02 % sodium azide,0.05 % BSA,50 % glycerol, pH 7.3.

Preservative: Sodium azide

Precaution of Use: This product contains Sodium azide: a POISONOUS AND HAZARDOUS SUBSTANCE which should be handled by trained staff only.

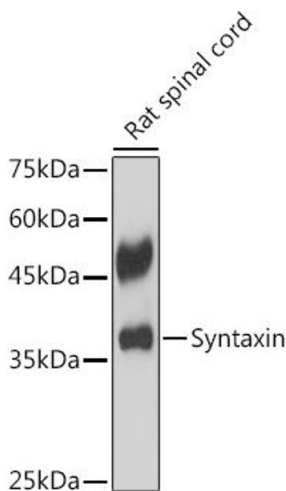
Storage: -20 °C

Storage Comment: Store at -20°C. Avoid freeze / thaw cycles.



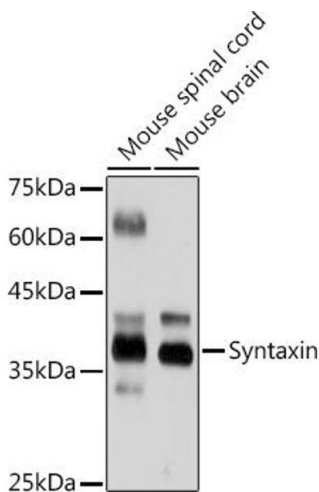
### Immunofluorescence

**Image 1.** Immunofluorescence analysis of rat brain cells using Syntaxin Rabbit mAb (ABIN7270685) at dilution of 1:100 (40x lens). Blue: DAPI for nuclear staining.



### Western Blotting

**Image 2.** Western blot analysis of extracts of Rat spinal cord, using Syntaxin antibody (ABIN7270685) at 1:1000 dilution. Secondary antibody: HRP Goat Anti-Rabbit IgG (H+L) (ABIN1684268 and ABIN3020597) at 1:10000 dilution. Lysates/proteins: 25 µg per lane. Blocking buffer: 3 % nonfat dry milk in TBST. Detection: ECL Basic Kit (RM00020). Exposure time: 90s.



### Western Blotting

**Image 3.** Western blot analysis of extracts of various cell lines, using Syntaxin antibody (ABIN7270685) at 1:1000 dilution. Secondary antibody: HRP Goat Anti-Rabbit IgG (H+L) (ABIN1684268 and ABIN3020597) at 1:10000 dilution. Lysates/proteins: 25 µg per lane. Blocking buffer: 3 % nonfat dry milk in TBST. Detection: ECL Basic Kit (RM00020). Exposure time: 10s.

Please check the [product details page](#) for more images. Overall 7 images are available for ABIN7270685.