

Datasheet for ABIN7270691  
**anti-SNTA1 antibody**



[Go to Product page](#)

2 Images

Overview

Quantity:	100 µL
Target:	SNTA1
Reactivity:	Human
Host:	Rabbit
Clonality:	Monoclonal
Conjugate:	This SNTA1 antibody is un-conjugated
Application:	Western Blotting (WB), Immunofluorescence (IF)

Product Details

Purpose:	Syntrophin alpha 1 Rabbit mAb
Immunogen:	A synthesized peptide derived from human Syntrophin alpha 1
Isotype:	IgG
Cross-Reactivity:	Human, Mouse, Rat
Characteristics:	Monoclonal Antibodies
Purification:	Affinity purification

Target Details

Target:	SNTA1
Alternative Name:	SNTA1 ( <a href="#">SNTA1 Products</a> )
Background:	Syntrophins are cytoplasmic peripheral membrane scaffold proteins that are components of

## Target Details

---

the dystrophin-associated protein complex. This gene is a member of the syntrophin gene family and encodes the most common syntrophin isoform found in cardiac tissues. The N-terminal PDZ domain of this syntrophin protein interacts with the C-terminus of the pore-forming alpha subunit (SCN5A) of the cardiac sodium channel Nav1.5. This protein also associates cardiac sodium channels with the nitric oxide synthase-PMCA4b (plasma membrane Ca-ATPase subtype 4b) complex in cardiomyocytes. This gene is a susceptibility locus for Long-QT syndrome (LQT) - an inherited disorder associated with sudden cardiac death from arrhythmia - and sudden infant death syndrome (SIDS). This protein also associates with dystrophin and dystrophin-related proteins at the neuromuscular junction and alters intracellular calcium ion levels in muscle tissue. [provided by RefSeq, Jan 2013],LQT12, SNT1, TACIP1, dJ1187J4.5,Cell Biology & Developmental Biology,Cytoskeleton,Cytoskeleton\_Microfilaments,Signal Transduction,SNTA1

---

Molecular Weight: 54kDa

---

Gene ID: 6640

---

UniProt: [Q13424](#)

---

Pathways: [Synaptic Membrane](#), [Skeletal Muscle Fiber Development](#)

## Application Details

---

Application Notes: WB,1:500 - 1:2000,IF,1:50 - 1:200

Restrictions: For Research Use only

## Handling

---

Format: Liquid

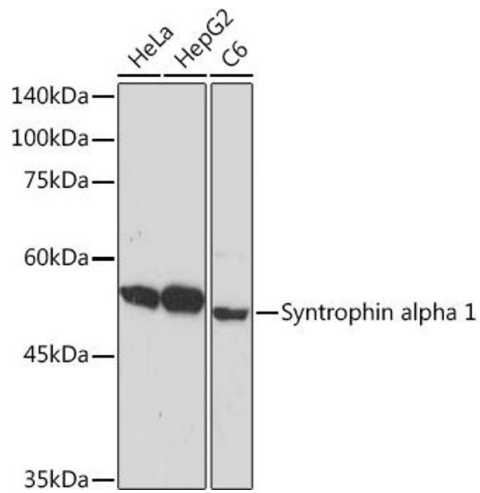
Buffer: PBS with 0.02 % sodium azide,0.05 % BSA,50 % glycerol, pH 7.3.

Preservative: Sodium azide

Precaution of Use: This product contains Sodium azide: a POISONOUS AND HAZARDOUS SUBSTANCE which should be handled by trained staff only.

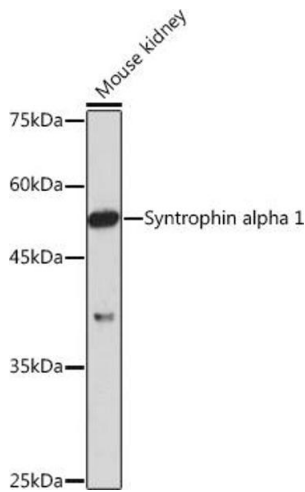
Storage: -20 °C

Storage Comment: Store at -20°C. Avoid freeze / thaw cycles.



### Western Blotting

**Image 1.** Western blot analysis of extracts of various cell lines, using Syntrophin alpha 1 Rabbit mAb (ABIN7270691) at 1:1000 dilution. Secondary antibody: HRP Goat Anti-Rabbit IgG (H+L) (ABIN1684268 and ABIN3020597) at 1:10000 dilution. Lysates/proteins: 25 µg per lane. Blocking buffer: 3 % nonfat dry milk in TBST. Detection: ECL Basic Kit (RM00020). Exposure time: 10s.



### Western Blotting

**Image 2.** Western blot analysis of extracts of Mouse kidney, using Syntrophin alpha 1 Rabbit mAb (ABIN7270691) at 1:1000 dilution. Secondary antibody: HRP Goat Anti-Rabbit IgG (H+L) (ABIN1684268 and ABIN3020597) at 1:10000 dilution. Lysates/proteins: 25 µg per lane. Blocking buffer: 3 % nonfat dry milk in TBST. Detection: ECL Enhanced Kit (RM00021). Exposure time: 180s.