



[Go to Product page](#)

Datasheet for ABIN7270709
anti-CCT6B antibody (AA 120-340)

3 Images

Overview

Quantity:	100 µL
Target:	CCT6B
Binding Specificity:	AA 120-340
Reactivity:	Human
Host:	Rabbit
Clonality:	Polyclonal
Conjugate:	This CCT6B antibody is un-conjugated
Application:	Western Blotting (WB), Immunofluorescence (IF)

Product Details

Purpose:	CCT6B Rabbit pAb
Immunogen:	Recombinant fusion protein containing a sequence corresponding to amino acids 120-340 of human CCT6B (NP_006575.2).
Sequence:	AEGFEAAKIK ALEVLEEKV TKEMKRKILL DVARTSLQTK VHAELADVLV EVVVDSVLAV RRPGYPIDLF MVEIMEMKHK LGTDTKLIQG LVLDHGARHP DMKKRVEDAF ILICNVSLEY EKTEVNSGFF YKTAEEKEKL VKAERKFIED RVQKIIDLKD KVCAQSNKGF VVINQKGIDP FSLDSLAKHG IVALRRAKRR NMERLSLACG GMAVNSFEDL T
Isotype:	IgG
Cross-Reactivity:	Human, Mouse, Rat
Characteristics:	Polyclonal Antibodies

Product Details

Purification: Affinity purification

Target Details

Target: CCT6B

Alternative Name: CCT6B ([CCT6B Products](#))

Background: This gene encodes a molecular chaperone that is a member of the chaperonin-containing TCP1 complex (CCT), also known as the TCP1 ring complex (TRiC). This complex consists of two identical stacked rings, each containing eight different proteins. Unfolded polypeptides enter the central cavity of the complex and are folded in an ATP-dependent manner. The complex folds various proteins, including actin and tubulin. Alternative splicing results in multiple transcript variants.,CCT6B,CCT-zeta-2,CCTZ-2,Cctz2,TCP-1-zeta-2,TSA303,Signal Transduction,CCT6B

Molecular Weight: 53kDa/57kDa

Gene ID: 10693

UniProt: [Q92526](#)

Application Details

Application Notes: WB,1:500 - 1:2000,IF,1:50 - 1:200

Restrictions: For Research Use only

Handling

Format: Liquid

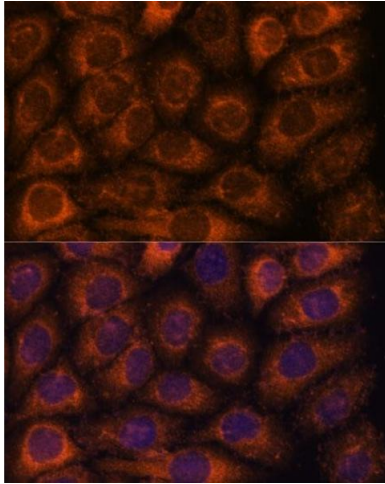
Buffer: PBS with 0.02 % sodium azide,50 % glycerol, pH 7.3.

Preservative: Sodium azide

Precaution of Use: This product contains Sodium azide: a POISONOUS AND HAZARDOUS SUBSTANCE which should be handled by trained staff only.

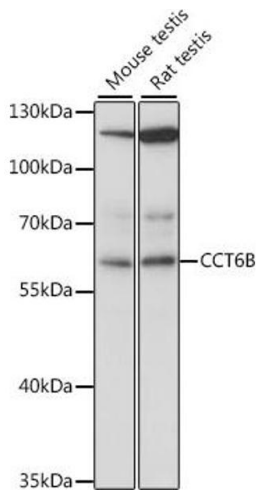
Storage: -20 °C

Storage Comment: Store at -20°C. Avoid freeze / thaw cycles.



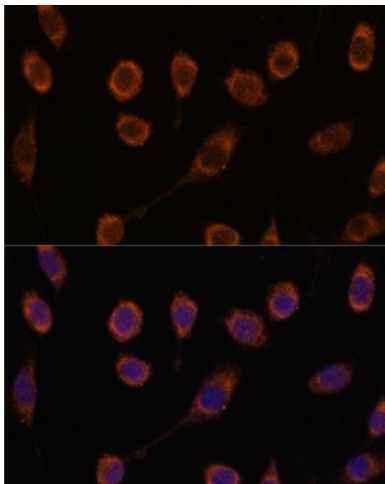
Immunofluorescence

Image 1. Immunofluorescence analysis of HeLa cells using CCT6B antibody (ABIN7270709) at dilution of 1:100. Blue: DAPI for nuclear staining.



Western Blotting

Image 2. Western blot analysis of extracts of various cell lines, using CCT6B antibody (ABIN7270709) at 1:1000 dilution. Secondary antibody: HRP Goat Anti-Rabbit IgG (H+L) (ABIN1684268 and ABIN3020597) at 1:10000 dilution. Lysates/proteins: 25 µg per lane. Blocking buffer: 3 % nonfat dry milk in TBST. Detection: ECL Basic Kit (RM00020). Exposure time: 15s.



Immunofluorescence

Image 3. Immunofluorescence analysis of L929 cells using CCT6B antibody (ABIN7270709) at dilution of 1:100. Blue: DAPI for nuclear staining.