



[Go to Product page](#)

Datasheet for ABIN7270723

## anti-TBK1 antibody

### 6 Images

#### Overview

Quantity:	100 µL
Target:	TBK1
Reactivity:	Human
Host:	Rabbit
Clonality:	Monoclonal
Conjugate:	This TBK1 antibody is un-conjugated
Application:	Western Blotting (WB), Immunoprecipitation (IP), Immunofluorescence (IF)

#### Product Details

Purpose:	TBK1/NAK Rabbit mAb
Immunogen:	A synthesized peptide derived from human TBK1/NAK
Isotype:	IgG
Cross-Reactivity:	Human, Mouse, Rat
Characteristics:	Monoclonal Antibodies
Purification:	Affinity purification

#### Target Details

Target:	TBK1
Alternative Name:	TBK1 ( <a href="#">TBK1 Products</a> )
Background:	The NF-kappa-B (NFKB) complex of proteins is inhibited by I-kappa-B (IKB) proteins, which

## Target Details

---

inactivate NFkB by trapping it in the cytoplasm. Phosphorylation of serine residues on the IKB proteins by IKB kinases marks them for destruction via the ubiquitination pathway, thereby allowing activation and nuclear translocation of the NFkB complex. The protein encoded by this gene is similar to IKB kinases and can mediate NFkB activation in response to certain growth factors. [provided by RefSeq, Oct 2010],FTDALS4, NAK, T2K,Epigenetics & Nuclear Signaling,Immunology & Inflammation,Kinase,Kinase\_Serine/threonine kinases,NF-kB Signaling Pathway,PI3K-Akt Signaling Pathway,PI3K-Akt Signaling Pathway\_Kinase of Akt,Protein phosphorylation,Signal Transduction,Toll-like Receptor Signaling Pathway,TBK1

Molecular Weight: 84kDa

Gene ID: 29110

UniProt: [Q9UHD2](#)

Pathways: [TLR Signaling](#), [Activation of Innate immune Response](#), [Hepatitis C](#), [Toll-Like Receptors Cascades](#), [SARS-CoV-2 Protein Interactome](#)

## Application Details

---

Application Notes: WB,1:500 - 1:2000,IF,1:50 - 1:200,IP,1:50 - 1:200

Restrictions: For Research Use only

## Handling

---

Format: Liquid

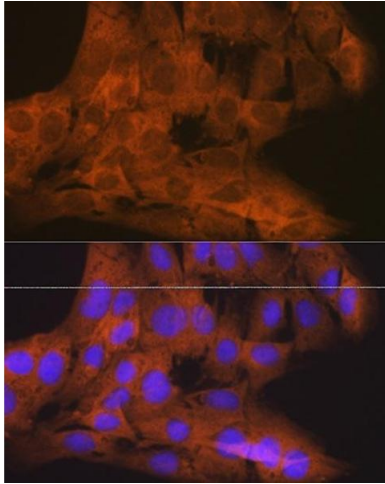
Buffer: PBS with 0.02 % sodium azide,0.05 % BSA,50 % glycerol, pH 7.3.

Preservative: Sodium azide

Precaution of Use: This product contains Sodium azide: a POISONOUS AND HAZARDOUS SUBSTANCE which should be handled by trained staff only.

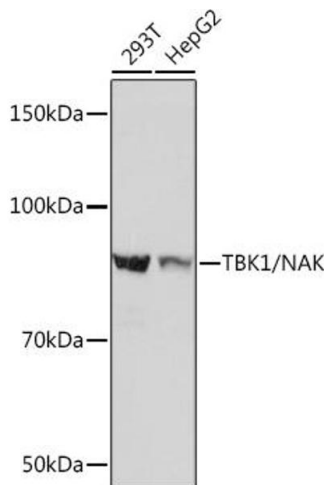
Storage: -20 °C

Storage Comment: Store at -20°C. Avoid freeze / thaw cycles.



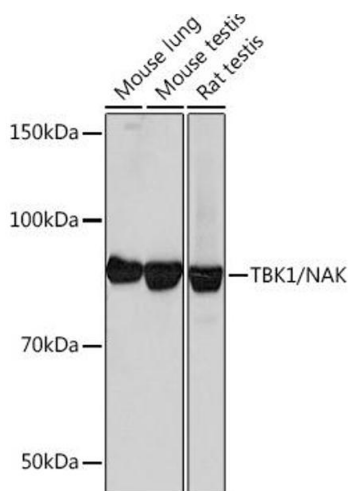
### Immunofluorescence

**Image 1.** Immunofluorescence analysis of C6 cells using TBK1/NAK Rabbit mAb (ABIN7270723) at dilution of 1:100 (40x lens). Blue: DAPI for nuclear staining.



### Western Blotting

**Image 2.** Western blot analysis of extracts of various cell lines, using TBK1/NAK Rabbit mAb (ABIN7270723) at 1:1000 dilution. Secondary antibody: HRP Goat Anti-Rabbit IgG (H+L) (ABIN1684268 and ABIN3020597) at 1:10000 dilution. Lysates/proteins: 25 µg per lane. Blocking buffer: 3 % nonfat dry milk in TBST. Detection: ECL Basic Kit (RM00020). Exposure time: 3s.



### Western Blotting

**Image 3.** Western blot analysis of extracts of various cell lines, using TBK1/NAK Rabbit mAb (ABIN7270723) at 1:1000 dilution. Secondary antibody: HRP Goat Anti-Rabbit IgG (H+L) (ABIN1684268 and ABIN3020597) at 1:10000 dilution. Lysates/proteins: 25 µg per lane. Blocking buffer: 3 % nonfat dry milk in TBST. Detection: ECL Basic Kit (RM00020). Exposure time: 30s.

Please check the [product details page](#) for more images. Overall 6 images are available for ABIN7270723.