



[Go to Product page](#)

Datasheet for ABIN7270736

anti-TAS2R38 antibody (AA 150-250)

1 Image

Overview

Quantity:	100 µL
Target:	TAS2R38
Binding Specificity:	AA 150-250
Reactivity:	Human
Host:	Rabbit
Clonality:	Polyclonal
Conjugate:	This TAS2R38 antibody is un-conjugated
Application:	Western Blotting (WB)

Product Details

Purpose:	TAS2R38 Rabbit pAb
Immunogen:	A synthetic peptide corresponding to a sequence within amino acids 150-250 of human TAS2R38 (NP_789787.4).
Sequence:	CSCICTVLCV WCFFSRPHFT VTTVLFMNNN TRLNWQIKDL NLFYSFLFCY LWSVPPFLLF LVSSGMLTVS LGRHMRTMKV YTRNSRDPSL EAHIKALKSL V
Isotype:	IgG
Cross-Reactivity:	Rat
Characteristics:	Polyclonal Antibodies
Purification:	Affinity purification

Target Details

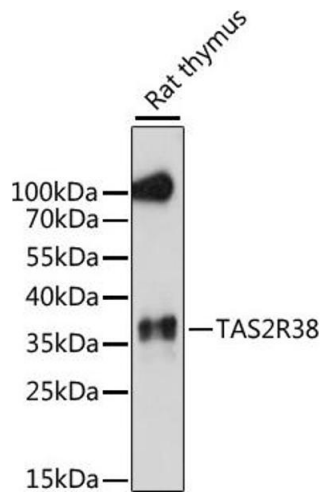
Target:	TAS2R38
Alternative Name:	TAS2R38 (TAS2R38 Products)
Background:	<p>This gene encodes a seven-transmembrane G protein-coupled receptor that controls the ability to taste glucosinolates, a family of bitter-tasting compounds found in plants of the Brassica sp. Synthetic compounds phenylthiocarbamide (PTC) and 6-n-propylthiouracil (PROP) have been identified as ligands for this receptor and have been used to test the genetic diversity of this gene. Although several allelic forms of this gene have been identified worldwide, there are two predominant common forms (taster and non-taster) found outside of Africa. These alleles differ at three nucleotide positions resulting in amino acid changes in the protein (A49P, A262V, and V296I) with the amino acid combination PAV identifying the taster variant (and AVI identifying the non-taster variant).,TAS2R38,PTC,T2R38,T2R61,Signal Transduction,G protein signaling,G-Protein-Coupled Receptors(GPCR),Neuroscience,TAS2R38</p>
Molecular Weight:	37kDa
Gene ID:	5726
UniProt:	P59533

Application Details

Application Notes:	WB,1:500 - 1:2000
Restrictions:	For Research Use only

Handling

Format:	Liquid
Buffer:	PBS with 0.02 % sodium azide,50 % glycerol, pH 7.3.
Preservative:	Sodium azide
Precaution of Use:	This product contains Sodium azide: a POISONOUS AND HAZARDOUS SUBSTANCE which should be handled by trained staff only.
Storage:	-20 °C
Storage Comment:	Store at -20°C. Avoid freeze / thaw cycles.



Western Blotting

Image 1. Western blot analysis of extracts of rat thymus, using TR38 antibody (ABIN7270736) at 1:1000 dilution. Secondary antibody: HRP Goat Anti-Rabbit IgG (H+L) (ABIN1684268 and ABIN3020597) at 1:10000 dilution. Lysates/proteins: 25 µg per lane. Blocking buffer: 3 % nonfat dry milk in TBST. Detection: ECL Enhanced Kit (RM00021). Exposure time: 90s.