

Datasheet for ABIN7270740

anti-TAX1BP1 antibody[Go to Product page](#)**1** Image

Overview

Quantity:	100 µL
Target:	TAX1BP1
Reactivity:	Human
Host:	Rabbit
Clonality:	Monoclonal
Conjugate:	This TAX1BP1 antibody is un-conjugated
Application:	Western Blotting (WB)

Product Details

Purpose:	TRAF6BP/TAX1BP1 Rabbit mAb
Immunogen:	A synthesized peptide derived from human TRAF6BP/TAX1BP1
Isotype:	IgG
Cross-Reactivity:	Human, Mouse, Rat
Characteristics:	Monoclonal Antibodies
Purification:	Affinity purification

Target Details

Target:	TAX1BP1
Alternative Name:	TAX1BP1 (TAX1BP1 Products)
Background:	This gene encodes a HTLV-1 tax1 binding protein. The encoded protein interacts with TNFAIP3,

Target Details

and inhibits TNF-induced apoptosis by mediating the TNFAIP3 anti-apoptotic activity. Degradation of this protein by caspase-3-like family proteins is associated with apoptosis induced by TNF. This protein may also have a role in the inhibition of inflammatory signaling pathways. Alternatively spliced transcript variants encoding different isoforms have been found for this gene.[provided by RefSeq, May 2011],CALCOCO3, T6BP, TXBP151,Apoptosis,Cell Biology & Developmental Biology,Immunology & Inflammation,NF-kB Signaling Pathway,Signal Transduction,TAX1BP1

Molecular Weight: 91kDa

Gene ID: 8887

UniProt: [Q86VP1](#)

Pathways: [TLR Signaling](#)

Application Details

Application Notes: WB,1:500 - 1:2000

Restrictions: For Research Use only

Handling

Format: Liquid

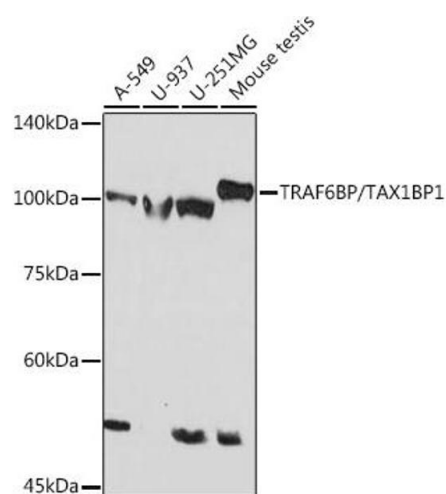
Buffer: PBS with 0.02 % sodium azide,0.05 % BSA,50 % glycerol, pH 7.3.

Preservative: Sodium azide

Precaution of Use: This product contains Sodium azide: a POISONOUS AND HAZARDOUS SUBSTANCE which should be handled by trained staff only.

Storage: -20 °C

Storage Comment: Store at -20°C. Avoid freeze / thaw cycles.



Western Blotting

Image 1. Western blot analysis of extracts of various cell lines, using TRBP/TBP1 Rabbit mAb (ABIN7270740) at 1:1000 dilution. Secondary antibody: HRP Goat Anti-Rabbit IgG (H+L) (ABIN1684268 and ABIN3020597) at 1:10000 dilution. Lysates/proteins: 25 µg per lane. Blocking buffer: 3 % nonfat dry milk in TBST. Detection: ECL Basic Kit (RM00020). Exposure time: 90s.