

Datasheet for ABIN7270753

anti-TEAD1 antibody[Go to Product page](#)**1** Image

Overview

Quantity:	100 µL
Target:	TEAD1
Reactivity:	Human
Host:	Rabbit
Clonality:	Monoclonal
Conjugate:	This TEAD1 antibody is un-conjugated
Application:	Western Blotting (WB)

Product Details

Purpose:	TEAD1 Rabbit mAb
Immunogen:	A synthesized peptide derived from human TEAD1
Isotype:	IgG
Cross-Reactivity:	Human
Characteristics:	Monoclonal Antibodies
Purification:	Affinity purification

Target Details

Target:	TEAD1
Alternative Name:	TEAD1 (TEAD1 Products)
Background:	This gene encodes a ubiquitous transcriptional enhancer factor that is a member of the

Target Details

TEA/ATTS domain family. This protein directs the transactivation of a wide variety of genes and, in placental cells, also acts as a transcriptional repressor. Mutations in this gene cause Sveinsson's chorioretinal atrophy. Additional transcript variants have been described but their full-length natures have not been experimentally verified. [provided by RefSeq, May 2010],AA, NTEF-1, REF1, TCF-13, TCF13, TEAD-1, TEF-1,Cardiovascular,Cell Adhesion,Cell Biology & Developmental Biology,Epigenetics & Nuclear Signaling,Heart,Heart_Cardiogenesis,Hippo Signaling Pathway,Transcription Factors,Wnt/ β -Catenin Signaling Pathway,TEAD1

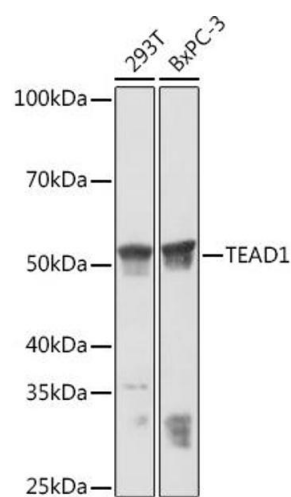
Molecular Weight:	54kDa
Gene ID:	7003
UniProt:	P28347 , Q15561 , Q15562 , Q99594
Pathways:	Regulation of Lipid Metabolism by PPARalpha

Application Details

Application Notes:	WB,1:500 - 1:2000
Restrictions:	For Research Use only

Handling

Format:	Liquid
Buffer:	PBS with 0.02 % sodium azide,0.05 % BSA,50 % glycerol, pH 7.3.
Preservative:	Sodium azide
Precaution of Use:	This product contains Sodium azide: a POISONOUS AND HAZARDOUS SUBSTANCE which should be handled by trained staff only.
Storage:	-20 °C
Storage Comment:	Store at -20°C. Avoid freeze / thaw cycles.



Western Blotting

Image 1. Western blot analysis of extracts of various cell lines, using TE Rabbit mAb (ABIN7270753) at 1:3000 dilution. Secondary antibody: HRP Goat Anti-Rabbit IgG (H+L) (ABIN1684268 and ABIN3020597) at 1:10000 dilution. Lysates/proteins: 25 µg per lane. Blocking buffer: 3 % nonfat dry milk in TBST. Detection: ECL Basic Kit (RM00020). Exposure time: 1 min.