



[Go to Product page](#)

Datasheet for ABIN7270775
anti-TEX2 antibody (AA 915-1134)

1 Image

Overview

Quantity:	100 µL
Target:	TEX2
Binding Specificity:	AA 915-1134
Reactivity:	Human
Host:	Rabbit
Clonality:	Polyclonal
Conjugate:	This TEX2 antibody is un-conjugated
Application:	Western Blotting (WB)

Product Details

Purpose:	TEX2 Rabbit pAb
Immunogen:	Recombinant fusion protein containing a sequence corresponding to amino acids 915-1134 of human TEX2 (NP_060939.3).
Sequence:	LETKMNLTKL GKEPLVEALK VGEIGKEGCR PRAFCLADSD EESSSAGSSE EDDAPEPSGG DKQLPGAEG YVGGHRTSKI MRFVDKITKS KYFQKATETE FIKKKIEEVS NTPLLLTVEV QECRGTAVN IPPPPTDRVW YGFRKPPHVE LKARPKLGER EVTLVHVTDW IEKKLEQEFQ KVFVMPNMDD VYITIMHSAM DPRSTSCLLK DPPVEAADQP
Isotype:	IgG
Cross-Reactivity:	Human, Mouse
Characteristics:	Polyclonal Antibodies

Product Details

Purification: Affinity purification

Target Details

Target: TEX2

Alternative Name: TEX2 ([TEX2 Products](#))

Background: During endoplasmic reticulum (ER stress or when cellular ceramide levels increase, may induce contacts between the ER and medial-Golgi complex to facilitate non-vesicular transport of ceramides from the ER to the Golgi complex where they are converted to complex sphingolipids, preventing toxic ceramide accumulation.,TEX2,HT008,TMEM96,Cell Biology & Developmental Biology,TEX2

Molecular Weight: 125kDa

Gene ID: 55852

UniProt: [Q8IWB9](#)

Application Details

Application Notes: WB,1:500 - 1:2000

Restrictions: For Research Use only

Handling

Format: Liquid

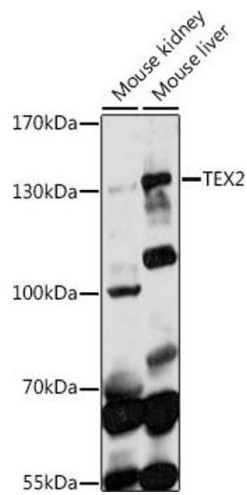
Buffer: PBS with 0.02 % sodium azide,50 % glycerol, pH 7.3.

Preservative: Sodium azide

Precaution of Use: This product contains Sodium azide: a POISONOUS AND HAZARDOUS SUBSTANCE which should be handled by trained staff only.

Storage: -20 °C

Storage Comment: Store at -20°C. Avoid freeze / thaw cycles.



Western Blotting

Image 1. Western blot analysis of extracts of various cell lines, using TEX2 antibody (ABIN7270775) at 1:1000 dilution. Secondary antibody: HRP Goat Anti-Rabbit IgG (H+L) (ABIN1684268 and ABIN3020597) at 1:10000 dilution. Lysates/proteins: 25 µg per lane. Blocking buffer: 3 % nonfat dry milk in TBST. Detection: ECL Basic Kit (RM00020). Exposure time: 90s.