



[Go to Product page](#)

Datasheet for ABIN7270777

## anti-TET1 antibody

### 1 Image

#### Overview

Quantity:	100 µL
Target:	TET1
Reactivity:	Mouse
Host:	Rabbit
Clonality:	Monoclonal
Conjugate:	This TET1 antibody is un-conjugated
Application:	Western Blotting (WB), Immunohistochemistry (IHC)

#### Product Details

Purpose:	TET1 Rabbit mAb
Immunogen:	Recombinant protein of mouse TET1.
Isotype:	IgG
Cross-Reactivity:	Human, Mouse
Characteristics:	Monoclonal Antibodies
Purification:	Affinity purification

#### Target Details

Target:	TET1
Alternative Name:	TET1 ( <a href="#">TET1 Products</a> )
Background:	LCX, Cxxc6, AA517754, BB001228, D10Ert17, mKIAA1676, D10Ert17e, 2510010B09Rik, TET1

## Target Details

Molecular Weight:	219kDa
Gene ID:	52463
UniProt:	<a href="#">Q3URK3</a>
Pathways:	<a href="#">Stem Cell Maintenance</a> , <a href="#">Warburg Effect</a>

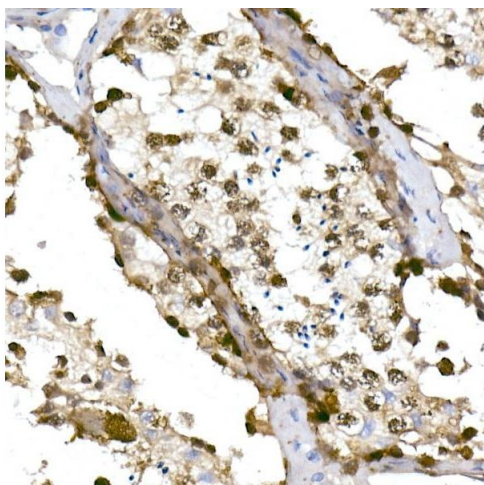
## Application Details

Application Notes:	WB,1:500 - 1:2000,IHC,1:50 - 1:200
Restrictions:	For Research Use only

## Handling

Format:	Liquid
Buffer:	PBS with 0.02 % sodium azide,50 % glycerol, pH 7.3.
Preservative:	Sodium azide
Precaution of Use:	This product contains Sodium azide: a POISONOUS AND HAZARDOUS SUBSTANCE which should be handled by trained staff only.
Storage:	-20 °C
Storage Comment:	Store at -20°C. Avoid freeze / thaw cycles.

## Images



### Immunohistochemistry

**Image 1.** Immunohistochemistry of paraffin-embedded human testis using TET1 Rabbit mAb (ABIN7270777) at dilution of 1:100 (40x lens). Perform high pressure antigen retrieval with 10 mM citrate buffer pH 6.0 before commencing with IHC staining protocol.