

Datasheet for ABIN7270799

anti-TXNDC12 antibody

7 Images

[Go to Product page](#)

Overview

Quantity:	100 µL
Target:	TXNDC12
Reactivity:	Human
Host:	Rabbit
Clonality:	Monoclonal
Conjugate:	This TXNDC12 antibody is un-conjugated
Application:	Western Blotting (WB), Immunohistochemistry (IHC)

Product Details

Purpose:	ERp19 Rabbit mAb
Immunogen:	A synthesized peptide derived from human ERp19.
Isotype:	IgG
Cross-Reactivity:	Human, Mouse, Rat
Characteristics:	Monoclonal Antibodies
Purification:	Affinity purification

Target Details

Target:	TXNDC12
Alternative Name:	ERp19 (TXNDC12 Products)
Background:	This gene encodes a member of the thioredoxin superfamily. Members of this family are

Target Details

characterized by a conserved active motif called the thioredoxin fold that catalyzes disulfide bond formation and isomerization. This protein localizes to the endoplasmic reticulum and has a single atypical active motif. The encoded protein is mainly involved in catalyzing native disulfide bond formation and displays activity similar to protein-disulfide isomerases. This protein may play a role in defense against endoplasmic reticulum stress. Alternate splicing results in both coding and non-coding variants.,TXNDC12, AG1, AGR1, ERP16, ERP18, ERP19, PDIA16, TLP19, hAG-1, hTLP19, thioredoxin domain containing 12,Signal Transduction,ERp19

Molecular Weight: 17kDa

Gene ID: 51060

UniProt: [O95881](#)

Pathways: [Cell RedoxHomeostasis](#)

Application Details

Application Notes: WB,1:500 - 1:2000,IHC,1:50 - 1:200

Restrictions: For Research Use only

Handling

Format: Liquid

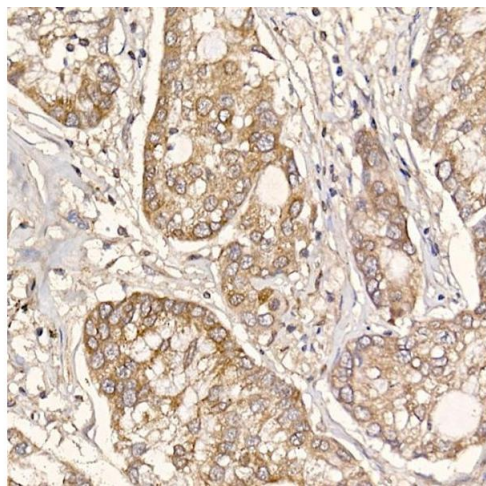
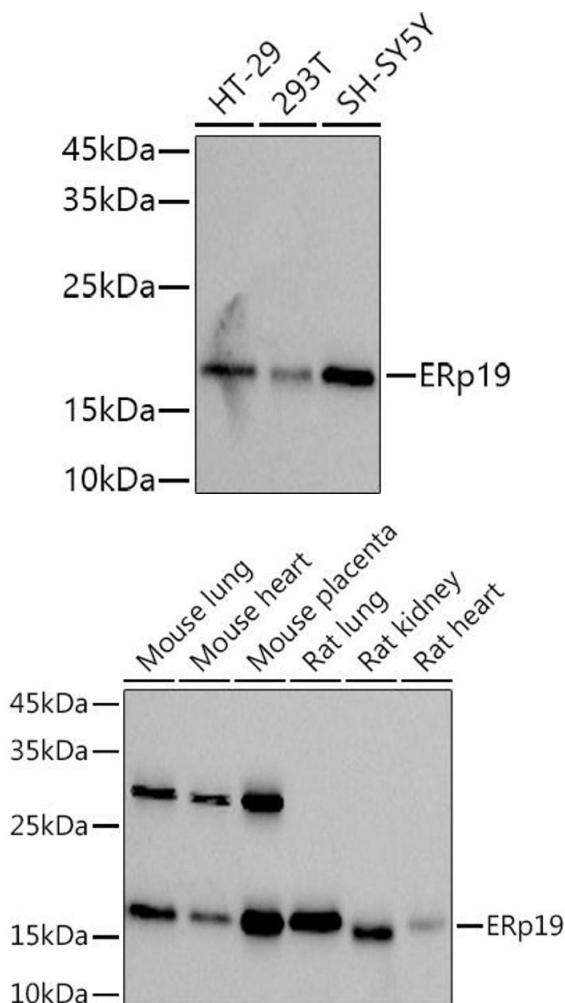
Buffer: PBS with 0.02 % sodium azide,50 % glycerol, pH 7.3.

Preservative: Sodium azide

Precaution of Use: This product contains Sodium azide: a POISONOUS AND HAZARDOUS SUBSTANCE which should be handled by trained staff only.

Storage: -20 °C

Storage Comment: Store at -20°C. Avoid freeze / thaw cycles.



Western Blotting

Image 1. Western blot analysis of extracts of various cell lines, using (ABIN7270799) at 1:1000 dilution. Secondary antibody: HRP Goat Anti-Rabbit IgG (H+L) (ABIN1684268 and ABIN3020597) at 1:10000 dilution. Lysates/proteins: 25 µg per lane. Blocking buffer: 3% nonfat dry milk in TBST. Detection: ECL Basic Kit (RM00020). Exposure time: 3s.

Western Blotting

Image 2. Western blot analysis of extracts of various cell lines, using (ABIN7270799) at 1:1000 dilution. Secondary antibody: HRP Goat Anti-Rabbit IgG (H+L) (ABIN1684268 and ABIN3020597) at 1:10000 dilution. Lysates/proteins: 25 µg per lane. Blocking buffer: 3% nonfat dry milk in TBST. Detection: ECL Basic Kit (RM00020). Exposure time: 90s.

Immunohistochemistry

Image 3. Immunohistochemistry of paraffin-embedded human lung cancer using ERp19 Rabbit mAb (ABIN7270799) at dilution of 1:200 (40x lens). Perform high pressure antigen retrieval with 10 mM citrate buffer pH 6.0 before commencing with IHC staining protocol.

Please check the [product details page](#) for more images. Overall 7 images are available for ABIN7270799.