



Datasheet for ABIN7270810
anti-TMX2 antibody (AA 128-296)



[Go to Product page](#)

5 Images

Overview

Quantity:	100 µL
Target:	TMX2
Binding Specificity:	AA 128-296
Reactivity:	Human
Host:	Rabbit
Clonality:	Polyclonal
Conjugate:	This TMX2 antibody is un-conjugated
Application:	Western Blotting (WB), Immunohistochemistry (IHC), Immunofluorescence (IF)

Product Details

Purpose:	TMX2 Rabbit pAb
Immunogen:	Recombinant fusion protein containing a sequence corresponding to amino acids 128-296 of human TMX2 (NP_057043.1).
Sequence:	KPPLYMGPEY IKYFNDKTID EELERDKRVT WIVEFFANWS NDCQSFAPYIY ADLSLKYNCT GLNFGKVDVG RYTDVSTRYK VSTSPLTKQL PTLILFQGGK EAMRRPQIDK KGRAVSWTFS EENVIREFNL NELYQRAKKL SKAGDNIPEE QPVASTPTTV SDGENKKDK
Isotype:	IgG
Cross-Reactivity:	Human, Mouse, Rat
Characteristics:	Polyclonal Antibodies
Purification:	Affinity purification

Target Details

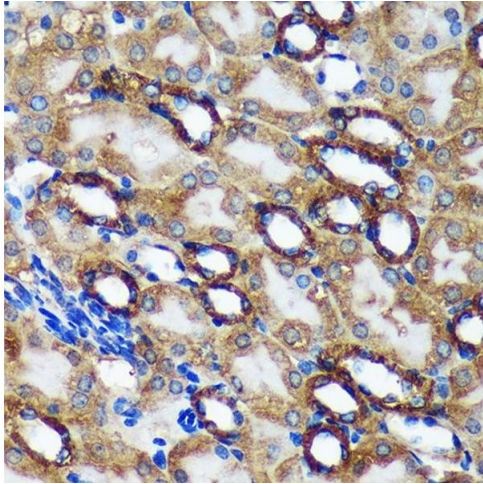
Target:	TMX2
Alternative Name:	TMX2 (TMX2 Products)
Background:	This gene encodes a member of the disulfide isomerase (PDI) family of endoplasmic reticulum (ER) proteins that catalyze protein folding and thiol-disulfide interchange reactions. The encoded protein has an N-terminal ER-signal sequence, a catalytically active thioredoxin domain, one transmembrane domain and a C-terminal ER-retention sequence. This protein is enriched on the mitochondria-associated-membrane of the ER via palmitoylation of two of its cytosolically exposed cysteines.,TMX2,CGI-31,PDIA12,PIG26,TXNDC14,Cell Biology & Developmental Biology,TMX2
Gene ID:	51075
UniProt:	Q9Y320

Application Details

Application Notes:	WB,1:500 - 1:2000,IHC,1:50 - 1:200,IF,1:50 - 1:200
Restrictions:	For Research Use only

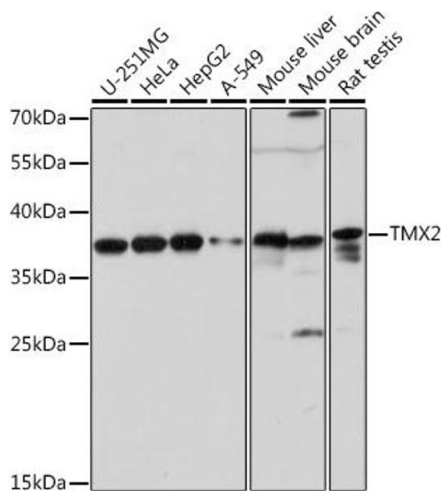
Handling

Format:	Liquid
Buffer:	PBS with 0.02 % sodium azide,50 % glycerol, pH 7.3.
Preservative:	Sodium azide
Precaution of Use:	This product contains Sodium azide: a POISONOUS AND HAZARDOUS SUBSTANCE which should be handled by trained staff only.
Storage:	-20 °C
Storage Comment:	Store at -20°C. Avoid freeze / thaw cycles.



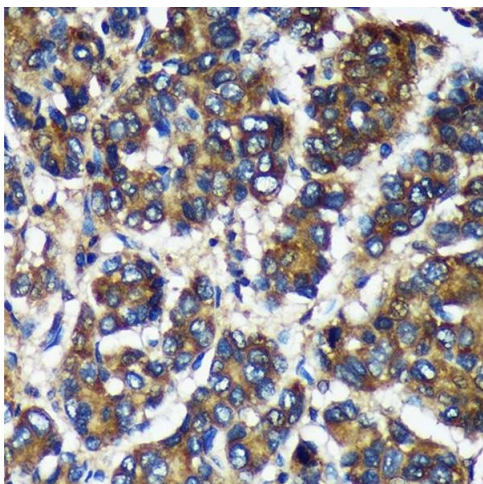
Immunohistochemistry

Image 1. Immunohistochemistry of paraffin-embedded Mouse kidney using TMX2 Rabbit pAb (ABIN7270810) at dilution of 1:100 (40x lens). Perform microwave antigen retrieval with 10 mM Tris/EDTA buffer pH 9.0 before commencing with IHC staining protocol.



Western Blotting

Image 2. Western blot analysis of extracts of various cell lines, using TMX2 pAb (ABIN7270810) at 1:1000 dilution. Secondary antibody: HRP Goat Anti-Rabbit IgG (H+L) (ABIN1684268 and ABIN3020597) at 1:10000 dilution. Lysates/proteins: 25 µg per lane. Blocking buffer: 3 % nonfat dry milk in TBST. Detection: ECL Basic Kit (RM00020). Exposure time: 30s.



Immunohistochemistry

Image 3. Immunohistochemistry of paraffin-embedded Human liver cancer using TMX2 Rabbit pAb (ABIN7270810) at dilution of 1:100 (40x lens). Perform microwave antigen retrieval with 10 mM Tris/EDTA buffer pH 9.0 before commencing with IHC staining protocol.

Please check the [product details page](#) for more images. Overall 5 images are available for ABIN7270810.