

Datasheet for ABIN7270826
anti-TRH antibody (AA 100-200)[Go to Product page](#)

4 Images

Overview

Quantity:	100 µL
Target:	TRH
Binding Specificity:	AA 100-200
Reactivity:	Human
Host:	Rabbit
Clonality:	Polyclonal
Conjugate:	This TRH antibody is un-conjugated
Application:	Western Blotting (WB), Immunofluorescence (IF)

Product Details

Purpose:	TRH Rabbit pAb
Immunogen:	A synthetic peptide corresponding to a sequence within amino acids 100-200 of human TRH (NP_009048.1).
Sequence:	EEEEEGGAVG PHKRQHPGRR EDEASWSVDV TQHKRQHPGR RSPWLAYAVP KRQHPGRRLA DPKAQRSWEE EEEEEEREED LMPEKRQHPG KRALGGPCGP Q
Isotype:	IgG
Cross-Reactivity:	Human, Mouse, Rat
Characteristics:	Polyclonal Antibodies
Purification:	Affinity purification

Target Details

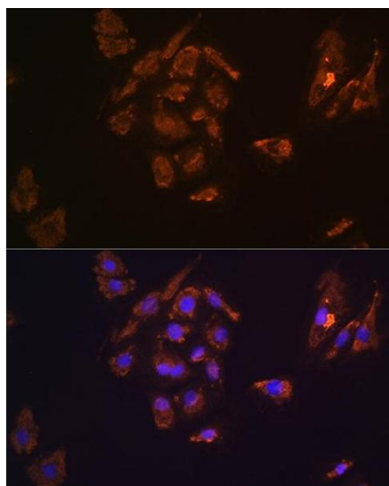
Target:	TRH
Alternative Name:	TRH (TRH Products)
Background:	This gene encodes a member of the thyrotropin-releasing hormone family. Cleavage of the encoded proprotein releases mature thyrotropin-releasing hormone, which is a tripeptide hypothalamic regulatory hormone. The human proprotein contains six thyrotropin-releasing hormone tripeptides. Thyrotropin-releasing hormone is involved in the regulation and release of thyroid-stimulating hormone, as well as prolactin. Deficiency of this hormone has been associated with hypothalamic hypothyroidism.,TRH,Pro-TRH,TRF,Cancer,Signal Transduction,Cell Biology & Developmental Biology,Growth factor,Endocrine & Metabolism,Neuroscience,TRH
Molecular Weight:	27kDa
Gene ID:	7200
UniProt:	P20396
Pathways:	Positive Regulation of Peptide Hormone Secretion , Feeding Behaviour

Application Details

Application Notes:	WB,1:500 - 1:2000,IF,1:50 - 1:200
Restrictions:	For Research Use only

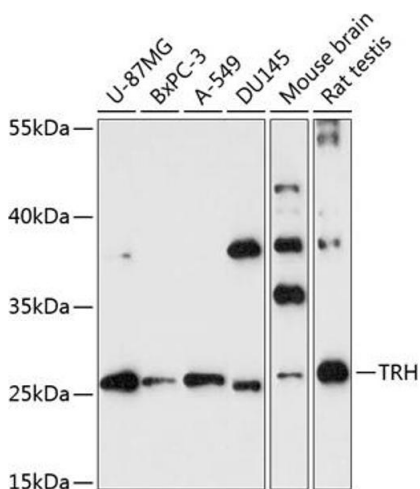
Handling

Format:	Liquid
Buffer:	PBS with 0.02 % sodium azide,50 % glycerol, pH 7.3.
Preservative:	Sodium azide
Precaution of Use:	This product contains Sodium azide: a POISONOUS AND HAZARDOUS SUBSTANCE which should be handled by trained staff only.
Storage:	-20 °C
Storage Comment:	Store at -20°C. Avoid freeze / thaw cycles.



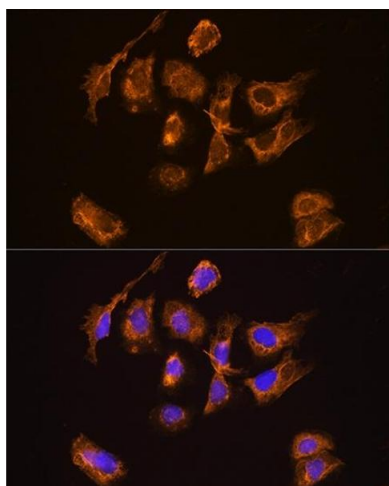
Immunofluorescence

Image 1. Immunofluorescence analysis of H9C2 cells using TRH Rabbit pAb (ABIN7270826) at dilution of 1:100. Blue: DAPI for nuclear staining.



Western Blotting

Image 2. Western blot analysis of extracts of various cell lines, using TRH antibody (ABIN7270826) at 1:3000 dilution. Secondary antibody: HRP Goat Anti-Rabbit IgG (H+L) (ABIN1684268 and ABIN3020597) at 1:10000 dilution. Lysates/proteins: 25 µg per lane. Blocking buffer: 3 % nonfat dry milk in TBST. Detection: ECL Basic Kit (RM00020). Exposure time: 90s.



Immunofluorescence

Image 3. Immunofluorescence analysis of U2OS cells using TRH Rabbit pAb (ABIN7270826) at dilution of 1:100. Blue: DAPI for nuclear staining.

Please check the [product details page](#) for more images. Overall 4 images are available for ABIN7270826.