



[Go to Product page](#)

Datasheet for ABIN7270828
anti-TIGD1 antibody (AA 1-300)

1 Image

Overview

Quantity:	100 µL
Target:	TIGD1
Binding Specificity:	AA 1-300
Reactivity:	Human
Host:	Rabbit
Clonality:	Polyclonal
Conjugate:	This TIGD1 antibody is un-conjugated
Application:	Western Blotting (WB)

Product Details

Purpose:	TIGD1 Rabbit pAb
Immunogen:	Recombinant fusion protein containing a sequence corresponding to amino acids 1-300 of human TIGD1 (NP_663748.1).
Sequence:	MASKCSSERK SRTSLTLNQK LEMIKLSEEG MSKAEIGRRL GLLRQTVSQV VNAKEKFLKE VKSATPMNTR MIRKRNSLIA DMEKVLVWVI EDQTSRNIPL SQSLIQNKAL TLFNSMKAER GVEAAEEKFE ASRGWFMRFK ERSHFHNIKA QGEAASADVE AAASYPEALA KIIDEGGYTK QQIFNVDETA FYWKKMPSRT FIAREEKSVP GFKASKDRLT LLLGANAAGD FKLKPMLIYH SENPRLKKNY TKSTLPVLYK WNSKARMTAH LFTAWFTEYF KPTVETYCSE KKIPFKILL
Isotype:	IgG
Cross-Reactivity:	Mouse, Rat
Characteristics:	Polyclonal Antibodies

Product Details

Purification: Affinity purification

Target Details

Target: TIGD1

Alternative Name: TIGD1 ([TIGD1 Products](#))

Background: The protein encoded by this gene belongs to the tigger subfamily of the pogo superfamily of DNA-mediated transposons in humans. These proteins are related to DNA transposons found in fungi and nematodes, and more distantly to the Tc1 and mariner transposases. They are also very similar to the major mammalian centromere protein B. The exact function of this gene is not known.,TIGD1,EEYORE,Epigenetics & Nuclear Signaling,TIGD1

Molecular Weight: 67kDa

Gene ID: 200765

UniProt: [Q96MW7](#)

Application Details

Application Notes: WB,1:500 - 1:2000

Restrictions: For Research Use only

Handling

Format: Liquid

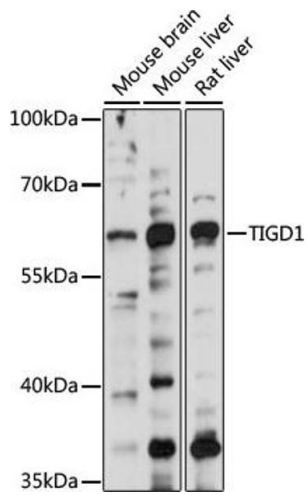
Buffer: PBS with 0.02 % sodium azide,50 % glycerol, pH 7.3.

Preservative: Sodium azide

Precaution of Use: This product contains Sodium azide: a POISONOUS AND HAZARDOUS SUBSTANCE which should be handled by trained staff only.

Storage: -20 °C

Storage Comment: Store at -20°C. Avoid freeze / thaw cycles.



Western Blotting

Image 1. Western blot analysis of extracts of various cell lines, using TIGD1 antibody (ABIN7270828) at 1000 dilution. Secondary antibody: HRP Goat Anti-Rabbit IgG (H+L) (ABIN1684268 and ABIN3020597) at 1:10000 dilution. Lysates/proteins: 25 µg per lane. Blocking buffer: 3 % nonfat dry milk in TBST. Detection: ECL Basic Kit (RM00020). Exposure time: 35s.