

Datasheet for ABIN7270842

**anti-TIRAP antibody**

3 Images

[Go to Product page](#)

## Overview

Quantity:	100 µL
Target:	TIRAP
Reactivity:	Human
Host:	Rabbit
Clonality:	Monoclonal
Conjugate:	This TIRAP antibody is un-conjugated
Application:	Western Blotting (WB), Immunohistochemistry (IHC)

## Product Details

Purpose:	TIRAP Rabbit mAb
Immunogen:	A synthesized peptide derived from human TIRAP
Isotype:	IgG
Cross-Reactivity:	Human, Mouse, Rat
Characteristics:	Monoclonal Antibodies
Purification:	Affinity purification

## Target Details

Target:	TIRAP
Alternative Name:	TIRAP ( <a href="#">TIRAP Products</a> )
Background:	The innate immune system recognizes microbial pathogens through Toll-like receptors (TLRs),

## Target Details

which identify pathogen-associated molecular patterns. Different TLRs recognize different pathogen-associated molecular patterns and all TLRs have a Toll-interleukin 1 receptor (TIR) domain, which is responsible for signal transduction. The protein encoded by this gene is a TIR adaptor protein involved in the TLR4 signaling pathway of the immune system. It activates NF-kappa-B, MAPK1, MAPK3 and JNK, which then results in cytokine secretion and the inflammatory response. Alternative splicing of this gene results in several transcript variants, however, not all variants have been fully described. [provided by RefSeq, Jul 2008],BACTS1, Mal, MyD88-2, wyatt,Cardiovascular,Cell Intrinsic Innate Immunity Signaling Pathway,Immunology & Inflammation,Innate Immunity\_TLR Signaling,Kinase,Toll-like Receptor Signaling Pathway,TIRAP

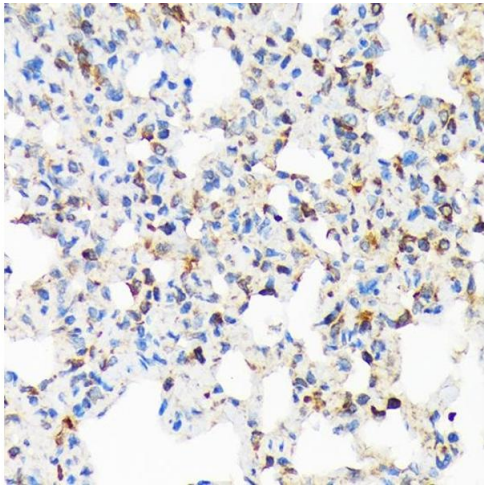
Molecular Weight:	28kDa
Gene ID:	114609
UniProt:	<a href="#">P58753</a>
Pathways:	<a href="#">TLR Signaling</a> , <a href="#">Activation of Innate immune Response</a> , <a href="#">Cellular Response to Molecule of Bacterial Origin</a> , <a href="#">Toll-Like Receptors Cascades</a>

## Application Details

Application Notes:	WB,1:500 - 1:2000,IHC,1:50 - 1:200
Restrictions:	For Research Use only

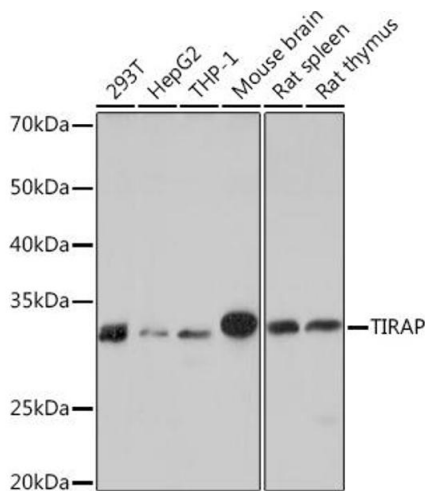
## Handling

Format:	Liquid
Buffer:	PBS with 0.02 % sodium azide,0.05 % BSA,50 % glycerol, pH 7.3.
Preservative:	Sodium azide
Precaution of Use:	This product contains Sodium azide: a POISONOUS AND HAZARDOUS SUBSTANCE which should be handled by trained staff only.
Storage:	-20 °C
Storage Comment:	Store at -20°C. Avoid freeze / thaw cycles.



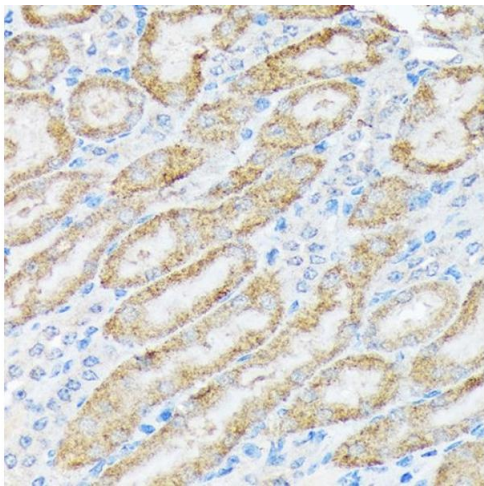
### Immunohistochemistry

**Image 1.** Immunohistochemistry of paraffin-embedded rat lung using TIRAP Rabbit mAb (ABIN7270842) at dilution of 1:100 (40x lens). Perform microwave antigen retrieval with 10 mM Tris/EDTA buffer pH 9.0 before commencing with IHC staining protocol.



### Western Blotting

**Image 2.** Western blot analysis of extracts of various cell lines, using TIRAP Rabbit mAb (ABIN7270842) at 1:1000 dilution. Secondary antibody: HRP Goat Anti-Rabbit IgG (H+L) (ABIN1684268 and ABIN3020597) at 1:10000 dilution. Lysates/proteins: 25 µg per lane. Blocking buffer: 3 % nonfat dry milk in TBST. Detection: ECL Basic Kit (RM00020). Exposure time: 10s.



### Immunohistochemistry

**Image 3.** Immunohistochemistry of paraffin-embedded mouse kidney using TIRAP Rabbit mAb (ABIN7270842) at dilution of 1:100 (40x lens). Perform microwave antigen retrieval with 10 mM Tris/EDTA buffer pH 9.0 before commencing with IHC staining protocol.