

Datasheet for ABIN7270859
anti-TLK1 antibody (AA 160-230)[Go to Product page](#)

4 Images

Overview

Quantity:	100 µL
Target:	TLK1
Binding Specificity:	AA 160-230
Reactivity:	Human
Host:	Rabbit
Clonality:	Polyclonal
Conjugate:	This TLK1 antibody is un-conjugated
Application:	Western Blotting (WB), Immunohistochemistry (IHC)

Product Details

Purpose:	TLK1 Rabbit pAb
Immunogen:	Recombinant fusion protein containing a sequence corresponding to amino acids 160-230 of human TLK1 (NP_036422.3).
Sequence:	PVRGIPPAIR SPQNSHSHST PSSSVRPNSP SPTALAFGDH PIVQPKQLSF KIIQDTLTM KLAALSNKI Q
Isotype:	IgG
Cross-Reactivity:	Human, Mouse, Rat
Characteristics:	Polyclonal Antibodies
Purification:	Affinity purification

Target Details

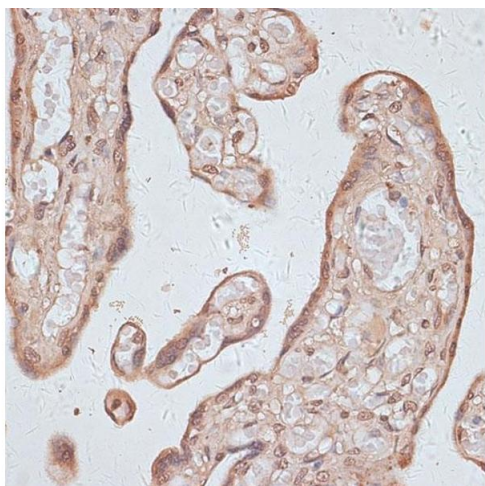
Target:	TLK1
Alternative Name:	TLK1 (TLK1 Products)
Background:	The protein encoded by this gene is a serine/threonine kinase that may be involved in the regulation of chromatin assembly. The encoded protein is only active when it is phosphorylated, and this phosphorylation is cell cycle-dependent, with the maximal activity of this protein coming during S phase. The catalytic activity of this protein is diminished by DNA damage and by blockage of DNA replication. Three transcript variants encoding different isoforms have been found for this gene.,TLK1,PKU-beta,Epigenetics & Nuclear Signaling,Signal Transduction,Kinase,Cell Biology & Developmental Biology,Apoptosis,TLK1
Molecular Weight:	63kDa/77kDa/81kDa/86kDa/89kDa
Gene ID:	9874
UniProt:	Q9UKI8

Application Details

Application Notes:	WB,1:500 - 1:2000,IHC,1:50 - 1:100
Restrictions:	For Research Use only

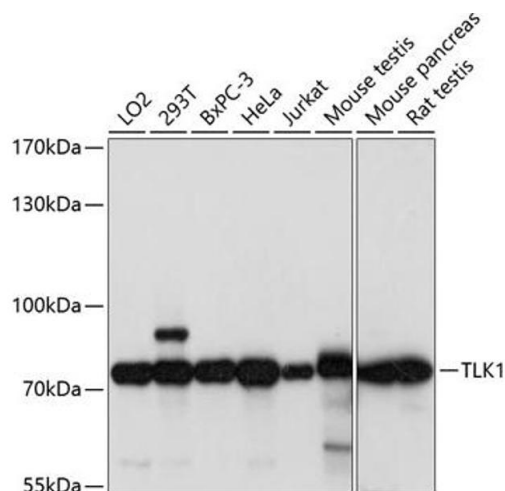
Handling

Format:	Liquid
Buffer:	PBS with 0.02 % sodium azide,50 % glycerol, pH 7.3.
Preservative:	Sodium azide
Precaution of Use:	This product contains Sodium azide: a POISONOUS AND HAZARDOUS SUBSTANCE which should be handled by trained staff only.
Storage:	-20 °C
Storage Comment:	Store at -20°C. Avoid freeze / thaw cycles.



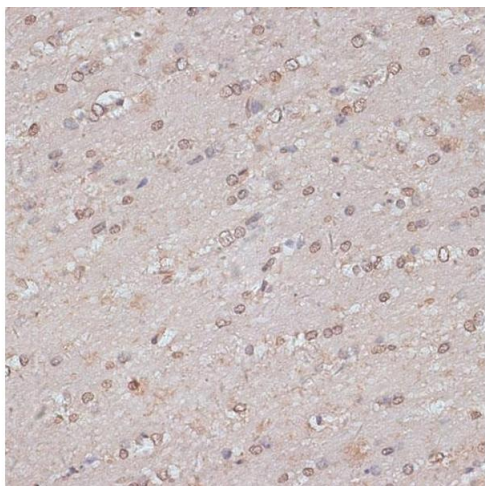
Immunohistochemistry

Image 1. Immunohistochemistry of paraffin-embedded human placenta using TLK1 antibody (ABIN7270859) at dilution of 1:100 (40x lens). Perform microwave antigen retrieval with 10 mM PBS buffer pH 7.2 before commencing with IHC staining protocol.



Western Blotting

Image 2. Western blot analysis of extracts of various cell lines, using TLK1 antibody (ABIN7270859) at 1:1000 dilution. Secondary antibody: HRP Goat Anti-Rabbit IgG (H+L) (ABIN1684268 and ABIN3020597) at 1:10000 dilution. Lysates/proteins: 25 µg per lane. Blocking buffer: 3 % nonfat dry milk in TBST. Detection: ECL Basic Kit (RM00020). Exposure time: 180s.



Immunohistochemistry

Image 3. Immunohistochemistry of paraffin-embedded mouse brain using TLK1 antibody (ABIN7270859) at dilution of 1:100 (40x lens). Perform microwave antigen retrieval with 10 mM PBS buffer pH 7.2 before commencing with IHC staining protocol.

Please check the [product details page](#) for more images. Overall 4 images are available for ABIN7270859.