



[Go to Product page](#)

Datasheet for ABIN7270881
anti-TCF25 antibody (AA 1-300)

1 Image

Overview

Quantity:	100 µL
Target:	TCF25
Binding Specificity:	AA 1-300
Reactivity:	Human
Host:	Rabbit
Clonality:	Polyclonal
Conjugate:	This TCF25 antibody is un-conjugated
Application:	Western Blotting (WB)

Product Details

Purpose:	TCF25 Rabbit pAb
Immunogen:	Recombinant fusion protein containing a sequence corresponding to amino acids 1-300 of human TCF25 (NP_055787.1).
Sequence:	MSRRALRRLR GEQRGQEPLG PGALHFDLRD DDAEEEGPK RELGVRPVG AGKEGVRVNN RFELINIDDL EDDPVVNGER SGCALTDAVA PGNKGRGQRG NTESKTDGDD TETVPSEQSH ASGKLRKKKK KQKNKKSSTG EASENGLEDI DRILERIEDS TGLNRPGPAP LSSRKHVLYV EHRHLNPDTE LKRYFGARAI LGEQRPRQRQ RVYPKCTWLT TPKSTWPRYS KPGLSMRLLLE SKKGLSFFAF EHSEEQQAQ HKFLVAVESM EPNNIVLLQ TSPYHVDSLQ QLSDACRFQE
Isotype:	IgG
Cross-Reactivity:	Human
Characteristics:	Polyclonal Antibodies

Product Details

Purification: Affinity purification

Target Details

Target: TCF25

Alternative Name: TCF25 ([TCF25 Products](#))

Background: TCF25 is a member of the basic helix-loop-helix (bHLH) family of transcription factors that are important in embryonic development (Steen and Lindholm, 2008 [PubMed 18068114]).[supplied by OMIM, Sep 2008],TCF25,FKSG26,Hulp1,NULP1,PRO2620,hKIAA1049,Epigenetics & Nuclear Signaling,Transcription Factors,Cardiovascular,Heart,Cardiogenesis,TCF25

Molecular Weight: 76kDa

Gene ID: 22980

UniProt: [Q9BQ70](#)

Application Details

Application Notes: WB,1:500 - 1:2000

Restrictions: For Research Use only

Handling

Format: Liquid

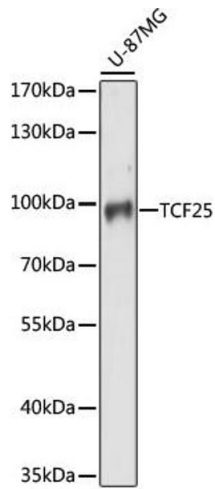
Buffer: PBS with 0.02 % sodium azide,50 % glycerol, pH 7.3.

Preservative: Sodium azide

Precaution of Use: This product contains Sodium azide: a POISONOUS AND HAZARDOUS SUBSTANCE which should be handled by trained staff only.

Storage: -20 °C

Storage Comment: Store at -20°C. Avoid freeze / thaw cycles.



Western Blotting

Image 1. Western blot analysis of extracts of U-87MG cells, using TCF25 antibody (ABIN7270881) at 1:1000 dilution. Secondary antibody: HRP Goat Anti-Rabbit IgG (H+L) (ABIN1684268 and ABIN3020597) at 1:10000 dilution. Lysates/proteins: 25 µg per lane. Blocking buffer: 3 % nonfat dry milk in TBST. Detection: ECL Basic Kit (RM00020). Exposure time: 30s.