



[Go to Product page](#)

Datasheet for ABIN7270895  
**anti-Mafg antibody (AA 1-162)**

1 Image

Overview

Quantity:	100 µL
Target:	Mafg
Binding Specificity:	AA 1-162
Reactivity:	Human
Host:	Rabbit
Clonality:	Polyclonal
Conjugate:	This Mafg antibody is un-conjugated
Application:	Western Blotting (WB)

Product Details

Purpose:	MAFG Rabbit pAb
Immunogen:	Recombinant fusion protein containing a sequence corresponding to amino acids 1-162 of human MAFG (NP_002350.1).
Sequence:	MTTPNKGKKA LKVKREPGEN GTSLTDEELV TMSVRELNQH LRGLSKEEIV QLKQRRRTLK NRGYAASCRV KRVTQKEELE KQKAELQQEV EKLASENASM KLELDALRSK YEALQTFART VARSPVAPAR GPLAAGLGPL VPGKVAATSV ITIVKSKTDA RS
Isotype:	IgG
Cross-Reactivity:	Mouse
Characteristics:	Polyclonal Antibodies
Purification:	Affinity purification

## Target Details

---

Target:	Mafg
Alternative Name:	MAFG ( <a href="#">Mafg Products</a> )
Background:	Globin gene expression is regulated through nuclear factor erythroid-2 (NFE2) elements located in enhancer-like locus control regions positioned many kb upstream of alpha- and beta-gene clusters (summarized by Blank et al., 1997 [PubMed 9166829]). NFE2 DNA-binding activity consists of a heterodimer containing a ubiquitous small Maf protein (MafF, MIM 604877, MafG, or MafK, MIM 600197) and the tissue-restricted protein p45 NFE2 (MIM 601490). Both subunits are members of the activator protein-1-like superfamily of basic leucine zipper (bZIP) proteins (see MIM 165160).,MAFG,hMAF,Epigenetics & Nuclear Signaling,Transcription Factors,Cell Biology & Developmental Biology,Endocrine & Metabolism,MAFG
Molecular Weight:	17kDa
Gene ID:	4097
UniProt:	<a href="#">O15525</a>

## Application Details

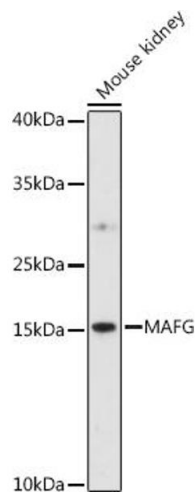
---

Application Notes:	WB,1:500 - 1:2000
Restrictions:	For Research Use only

## Handling

---

Format:	Liquid
Buffer:	PBS with 0.02 % sodium azide,50 % glycerol, pH 7.3.
Preservative:	Sodium azide
Precaution of Use:	This product contains Sodium azide: a POISONOUS AND HAZARDOUS SUBSTANCE which should be handled by trained staff only.
Storage:	-20 °C
Storage Comment:	Store at -20°C. Avoid freeze / thaw cycles.



### Western Blotting

**Image 1.** Western blot analysis of extracts of various cell lines, using MAFG antibody (ABIN7270895) at 1:1000 dilution. Secondary antibody: HRP Goat Anti-Rabbit IgG (H+L) (ABIN1684268 and ABIN3020597) at 1:10000 dilution. Lysates/proteins: 25 µg per lane. Blocking buffer: 3 % nonfat dry milk in TBST. Detection: ECL Enhanced Kit (RM00021). Exposure time: 90s.