

Datasheet for ABIN7270909 anti-TGFB1 antibody (AA 30-278)



[Go to Product page](#)

6 Images

Overview

Quantity:	100 µL
Target:	TGFB1
Binding Specificity:	AA 30-278
Reactivity:	Human
Host:	Rabbit
Clonality:	Polyclonal
Conjugate:	This TGFB1 antibody is un-conjugated
Application:	Western Blotting (WB), Immunohistochemistry (IHC), Immunofluorescence (IF)

Product Details

Purpose:	TGFB1 Rabbit pAb
Immunogen:	Recombinant fusion protein containing a sequence corresponding to amino acids 30-278 of human TGFB1 (NP_000651.3).
Sequence:	LSTCKTIDME LVKRKRIEAI RGQILSKLRL ASPPSQGEVP PGPLPEAVLA LYNSTRDRVA GESAEPEPEP EADYYAKEVT RVLMVETHNE IYDKFKQSTH SIYMFNTSE LREAVPEPVL LSRAELRLLR LKLKVEQHVE LYQKYSNNSW RYLSNRLLAP SDSPEWLSFD VTGVVRQWLS RGGEIEGFRL SAHCSCDSRD NTLQVDINGF TTGRRGDLAT IHGMNRPFL L MATPLERAQ HLQSSRHRR
Isotype:	IgG
Cross-Reactivity:	Human, Mouse, Rat
Characteristics:	Polyclonal Antibodies

Product Details

Purification: Affinity purification

Target Details

Target: TGFB1

Alternative Name: TGFB1 ([TGFB1 Products](#))

Background: This gene encodes a member of the transforming growth factor beta (TGFB) family of cytokines, which are multifunctional peptides that regulate proliferation, differentiation, adhesion, migration, and other functions in many cell types. Many cells have TGFB receptors, and the protein positively and negatively regulates many other growth factors. The secreted protein is cleaved into a latency-associated peptide (LAP) and a mature TGFB1 peptide, and is found in either a latent form composed of a TGFB1 homodimer, a LAP homodimer, and a latent TGFB1-binding protein, or in an active form composed of a TGFB1 homodimer. The mature peptide may also form heterodimers with other TGFB family members. This gene is frequently upregulated in tumor cells, and mutations in this gene result in Camurati-Engelmann disease.,TGFB1,CED,DPD1,LAP,TGFB,TGFbeta,TGF-β,Cancer,Invasion and Metastasis,Signal Transduction,Cell Biology & Developmental Biology,Apoptosis,Growth factor,TGF-b-Smad Signaling Pathway,Wnt/β-Catenin Signaling Pathway,Endocrine & Metabolism,Stem Cells,Cardiovascular,Angiogenesis,Angiogenic growth factors,Hypoxia,Ligand,TGFB1

Molecular Weight: 44kDa

Gene ID: 7040

UniProt: [P01137](#)

Pathways: [EGFR Signaling Pathway](#), [Dopaminergic Neurogenesis](#), [Cellular Response to Molecule of Bacterial Origin](#), [Glycosaminoglycan Metabolic Process](#), [Regulation of Leukocyte Mediated Immunity](#), [Regulation of Muscle Cell Differentiation](#), [Positive Regulation of Immune Effector Process](#), [Cell-Cell Junction Organization](#), [Production of Molecular Mediator of Immune Response](#), [Ribonucleoside Biosynthetic Process](#), [Skeletal Muscle Fiber Development](#), [Regulation of Carbohydrate Metabolic Process](#), [Protein targeting to Nucleus](#), [Autophagy](#), [Cancer Immune Checkpoints](#)

Application Details

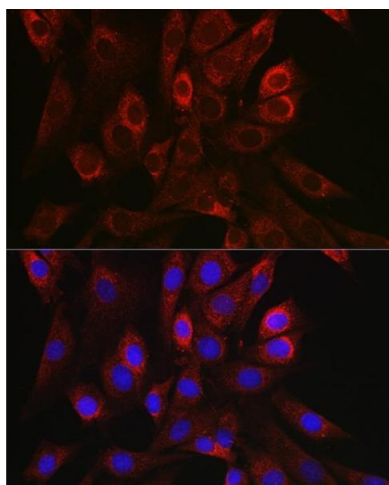
Application Notes: WB,1:500 - 1:2000,IHC,1:50 - 1:200,IF,1:50 - 1:200

Restrictions: For Research Use only

Handling

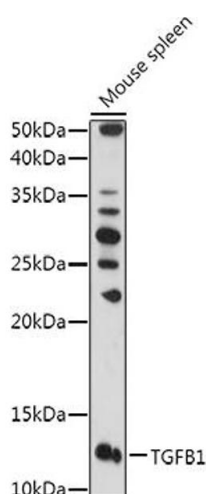
Format:	Liquid
Buffer:	PBS with 0.02 % sodium azide, 50 % glycerol, pH 7.3.
Preservative:	Sodium azide
Precaution of Use:	This product contains Sodium azide: a POISONOUS AND HAZARDOUS SUBSTANCE which should be handled by trained staff only.
Storage:	-20 °C
Storage Comment:	Store at -20°C. Avoid freeze / thaw cycles.

Images



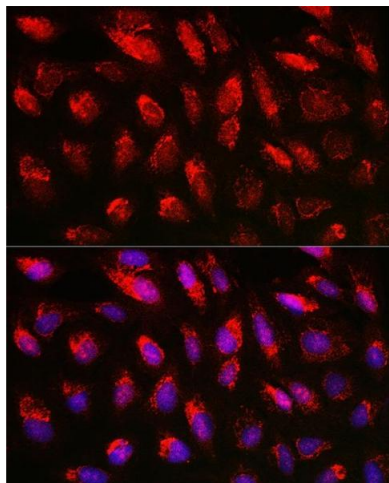
Immunofluorescence

Image 1. Immunofluorescence analysis of NIH/3T3 cells using TGF beta 1 antibody (ABIN7270909) at dilution of 1:150. Blue: DAPI for nuclear staining.



Western Blotting

Image 2. Western blot analysis of extracts of Mouse spleen, using TGFB1 antibody (ABIN7270909) at 1:1000 dilution. Secondary antibody: HRP Goat Anti-Rabbit IgG (H+L) (ABIN1684268 and ABIN3020597) at 1:10000 dilution. Lysates/proteins: 25 µg per lane. Blocking buffer: 3 % nonfat dry milk in TBST. Detection: ECL Basic Kit (RM00020). Exposure time: 180s.



Immunofluorescence

Image 3. Immunofluorescence analysis of U2OS cells using TGF beta 1 antibody (ABIN7270909) at dilution of 1:150. Blue: DAPI for nuclear staining.

Please check the [product details page](#) for more images. Overall 6 images are available for ABIN7270909.