

Datasheet for ABIN7270915

anti-TGFBI antibody

3 Images

[Go to Product page](#)

Overview

| | |
|--------------|---|
| Quantity: | 100 µL |
| Target: | TGFBI |
| Reactivity: | Human |
| Host: | Rabbit |
| Clonality: | Monoclonal |
| Conjugate: | This TGFBI antibody is un-conjugated |
| Application: | Western Blotting (WB), Immunohistochemistry (IHC) |

Product Details

| | |
|-------------------|--|
| Purpose: | TGF beta induced TGFBI Rabbit mAb |
| Immunogen: | A synthesized peptide derived from human TGF beta induced TGF beta induced TGFBI |
| Isotype: | IgG |
| Cross-Reactivity: | Human, Mouse, Rat |
| Characteristics: | Monoclonal Antibodies |
| Purification: | Affinity purification |

Target Details

| | |
|-------------------|--|
| Target: | TGFBI |
| Alternative Name: | TGFBI (TGFBI Products) |
| Background: | This gene encodes an RGD-containing protein that binds to type I, II and IV collagens. The RGD |

Target Details

motif is found in many extracellular matrix proteins modulating cell adhesion and serves as a ligand recognition sequence for several integrins. This protein plays a role in cell-collagen interactions and may be involved in endochondrial bone formation in cartilage. The protein is induced by transforming growth factor-beta and acts to inhibit cell adhesion. Mutations in this gene are associated with multiple types of corneal dystrophy. [provided by RefSeq, Jul 2008],BIGH3, CDB1, CDG2, CDGG1, CSD, CSD1, CSD2, CSD3, EBMD, LCD1,Cell Biology & Developmental Biology,Cytoskeleton,Extracellular Matrix,Extracellular Matrix_Bone,Extracellular Matrix_Collagen,Growth factors,Neuroscience,Signal Transduction,TGFBI

Molecular Weight: 68kDa

Gene ID: 7045

UniProt: [Q15582](#)

Application Details

Application Notes: WB,1:500 - 1:2000, IHC,1:50 - 1:200

Restrictions: For Research Use only

Handling

Format: Liquid

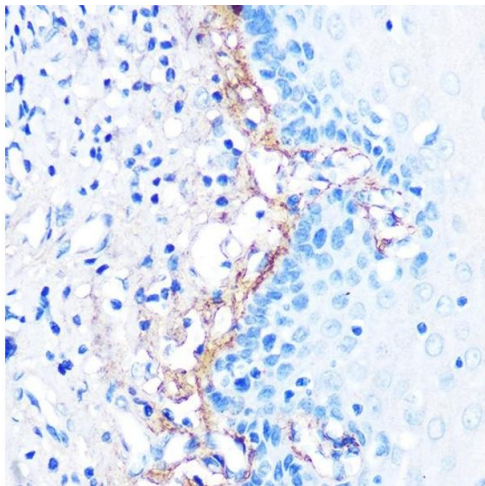
Buffer: PBS with 0.02 % sodium azide,0.05 % BSA,50 % glycerol, pH 7.3.

Preservative: Sodium azide

Precaution of Use: This product contains Sodium azide: a POISONOUS AND HAZARDOUS SUBSTANCE which should be handled by trained staff only.

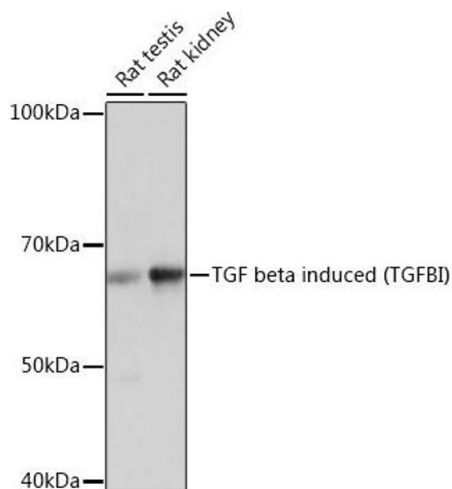
Storage: -20 °C

Storage Comment: Store at -20°C. Avoid freeze / thaw cycles.



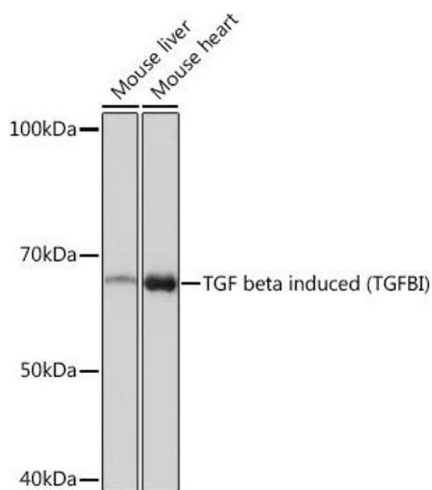
Immunohistochemistry

Image 1. Immunohistochemistry of paraffin-embedded human esophageal using TGF beta induced TGF beta induced (TGFB1) Rabbit mAb (ABIN7270915) at dilution of 1:100 (40x lens). Perform microwave antigen retrieval with 10 mM PBS buffer pH 7.2 before commencing with IHC staining protocol.



Western Blotting

Image 2. Western blot analysis of extracts of various cell lines, using TGF beta induced TGF beta induced (TGFB1) Rabbit mAb (ABIN7270915) at 1:1000 dilution. Secondary antibody: HRP Goat Anti-Rabbit IgG (H+L) (ABIN1684268 and ABIN3020597) at 1:10000 dilution. Lysates/proteins: 25 µg per lane. Blocking buffer: 3 % nonfat dry milk in TBST. Detection: ECL Basic Kit (RM00020). Exposure time: 10s.



Western Blotting

Image 3. Western blot analysis of extracts of various cell lines, using TGF beta induced TGF beta induced (TGFB1) Rabbit mAb (ABIN7270915) at 1:1000 dilution. Secondary antibody: HRP Goat Anti-Rabbit IgG (H+L) (ABIN1684268 and ABIN3020597) at 1:10000 dilution. Lysates/proteins: 25 µg per lane. Blocking buffer: 3 % nonfat dry milk in TBST. Detection: ECL Basic Kit (RM00020). Exposure time: 3 min.