

Datasheet for ABIN7270921
anti-TRPV6 antibody (AA 1-100)

2 Images

[Go to Product page](#)

Overview

Quantity:	100 µL
Target:	TRPV6
Binding Specificity:	AA 1-100
Reactivity:	Human
Host:	Rabbit
Clonality:	Polyclonal
Conjugate:	This TRPV6 antibody is un-conjugated
Application:	Western Blotting (WB), Immunohistochemistry (IHC)

Product Details

Purpose:	TRPV6 Rabbit pAb
Immunogen:	A synthetic peptide corresponding to a sequence within amino acids 1-100 of human TRPV6 (NP_061116.5).
Sequence:	MGPLQGDGGP ALGGADVAPR LSPVRVWPRP QAPKEPALHP MGLSLPKEKG LILCLWSKFC RWFQRRESWA QSRDEQNLLQ QKRIWESPLL LAAKDNDVQA
Isotype:	IgG
Cross-Reactivity:	Human, Mouse, Rat
Characteristics:	Polyclonal Antibodies
Purification:	Affinity purification

Target Details

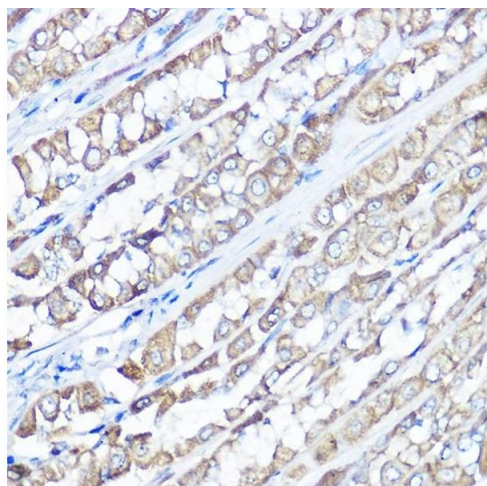
Target:	TRPV6
Alternative Name:	TRPV6 (TRPV6 Products)
Background:	<p>This gene encodes a member of a family of multipass membrane proteins that functions as calcium channels. The encoded protein contains N-terminal ankyrin repeats, which are required for channel assembly and regulation. Translation initiation for this protein occurs at a non-AUG start codon that is decoded as methionine. This gene is situated next to a closely related gene for transient receptor potential cation channel subfamily V member 5 (TRPV5). This locus has experienced positive selection in non-African populations, resulting in several non-synonymous codon differences among individuals of different genetic backgrounds.,TRPV6,ABP/ZF,CAT1,CATL,ECAC2,HSA277909,LP6728,ZFAB,Cancer,Signal Transduction,Endocrine & Metabolism,Neuroscience,Calcium Signaling,TRPV6</p>
Molecular Weight:	68kDa/87kDa
Gene ID:	55503
UniProt:	Q9H1D0
Pathways:	TCR Signaling

Application Details

Application Notes:	WB,1:500 - 1:2000,IHC,1:50 - 1:200
Restrictions:	For Research Use only

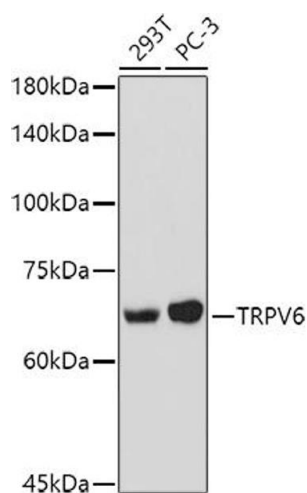
Handling

Format:	Liquid
Buffer:	PBS with 0.02 % sodium azide,50 % glycerol, pH 7.3.
Preservative:	Sodium azide
Precaution of Use:	This product contains Sodium azide: a POISONOUS AND HAZARDOUS SUBSTANCE which should be handled by trained staff only.
Storage:	-20 °C
Storage Comment:	Store at -20°C. Avoid freeze / thaw cycles.



Immunohistochemistry

Image 1. Immunohistochemistry of paraffin-embedded rat stomach using TRPV6 Rabbit pAb (ABIN7270921) at dilution of 1:100 (40x lens). Perform high pressure antigen retrieval with 10 mM citrate buffer pH 6.0 before commencing with IHC staining protocol.



Western Blotting

Image 2. Western blot analysis of extracts of various cell lines, using TRPV6 antibody (ABIN7270921) at 1:1000 dilution. Secondary antibody: HRP Goat Anti-Rabbit IgG (H+L) (ABIN1684268 and ABIN3020597) at 1:10000 dilution. Lysates/proteins: 25 µg per lane. Blocking buffer: 3 % nonfat dry milk in TBST. Detection: ECL Basic Kit (RM00020). Exposure time: 90s.